

GHIDINI
1961
GHIDINI



Seating

Leisure Sofa, Armchair	014
Bridge Sofa	020
Shaker Sofa, Armchair	026
Abbracci Modular Sofa	032
Elephant Sofa, Armchair	040
Tarantino Sofa, Armchair, Ottoman	048
Milo Sofa, Armchair	054
Frame Sofa, Armchair, Dormeuse	062
Bold Sofa, Lounge Chair, Ottoman	072
Abbracci Sofa, Armchair, Ottoman	080
Infinito Sofa, Armchair	088
Dodo Sofa, Armchair	098
Katana Sofa, Lounge Chair	104
Katana Armchair	110
Portofino Sofa, Armchair	112
Opera Sofa, Armchair	122
Sweet Lounge Chair	128
Sipario Lounge Chair	130
Bucket Lounge Chair, Bergere	132
Bold Armchair	164
Coast Chair	174
Miami Chair	257
Leporello Stools	262

Tables

Ottanta Tables	136
Locust Tables	142
Shaker Tables	146
Frame Dining and Coffee Table	152

Bold Dining and Coffee Table	160
Native Tables	168
Coast Table	172
Botany Table	176
Legs Table	178
Milo Coffee Table	180
Miami Table	257

Cabinets & Bookshelves

Tarantino Cabinets	184
Frame Cabinets	200
Frame Bookshelves	204
Bold Cabinets	208
Zuan Cabinets	218
Legs Bookshelves	230
Incrocio	232

Lighting

One on One	234
Jackfruit Lamp	236
Dusk Dawn	238
Mio, Bio, Trio	240
Can Can	242
Factory	248
Sfere	249
Indipendant	250

Coffee Tables & Complements

Porto	233
Gioiello Mirror	252
Kaleidos	254
Sunset Mirror	256

Fan Mirror	258
Frying Pan Mirror	260
Portrait with Birdie	261
Da Vinci Table	264
Flowers Tables	265
Opera Tables	266
Tumbrella & Butler Umbrella Stands	267
Butterfly	268

Accessories

Jackfruit	270
Tornado	272
Here (Thimble)	274
Nowhere (Bullet Vase)	275
There (Push Pin)	276
Omini Bowls	277
Cestini	278
Flirt Collection	279
Tip Top Collection	284

Rugs

Triple Wave Rugs	280
Connect Rugs	282

Materials Collection285

Technical Specifications & General Index307

THE COMPANY

Ghidini Bosco of Villa Carcina, in the province of Brescia, belongs to Italy's manufacturing excellence, thanks to their unparalleled manufacturing skills. A specialist in die casting brass, aluminium and zamak, the company excels in combining advanced technologies and rapid prototyping with traditional craft skills. Their catalogue includes thousands of products, ranging from lighting fixtures to furnishing items, decorative items and handles. Since over 50 years the company has established close ties with international architects and designers to develop custom products and create classical and contemporary art items. Pieces, those of GHIDINI1961, destined to become iconic, to erase the boundary between art and design and to establish with the public a communion of intentions and views such as to translate into a loyal and lasting relationship, just like artistic artefacts. A demonstration of how the reliability and quality of a brand can become a guarantee of an investment capable of acquiring value over time.



Roberto Ghidini, CEO



Stefano Giovannoni, Art Director

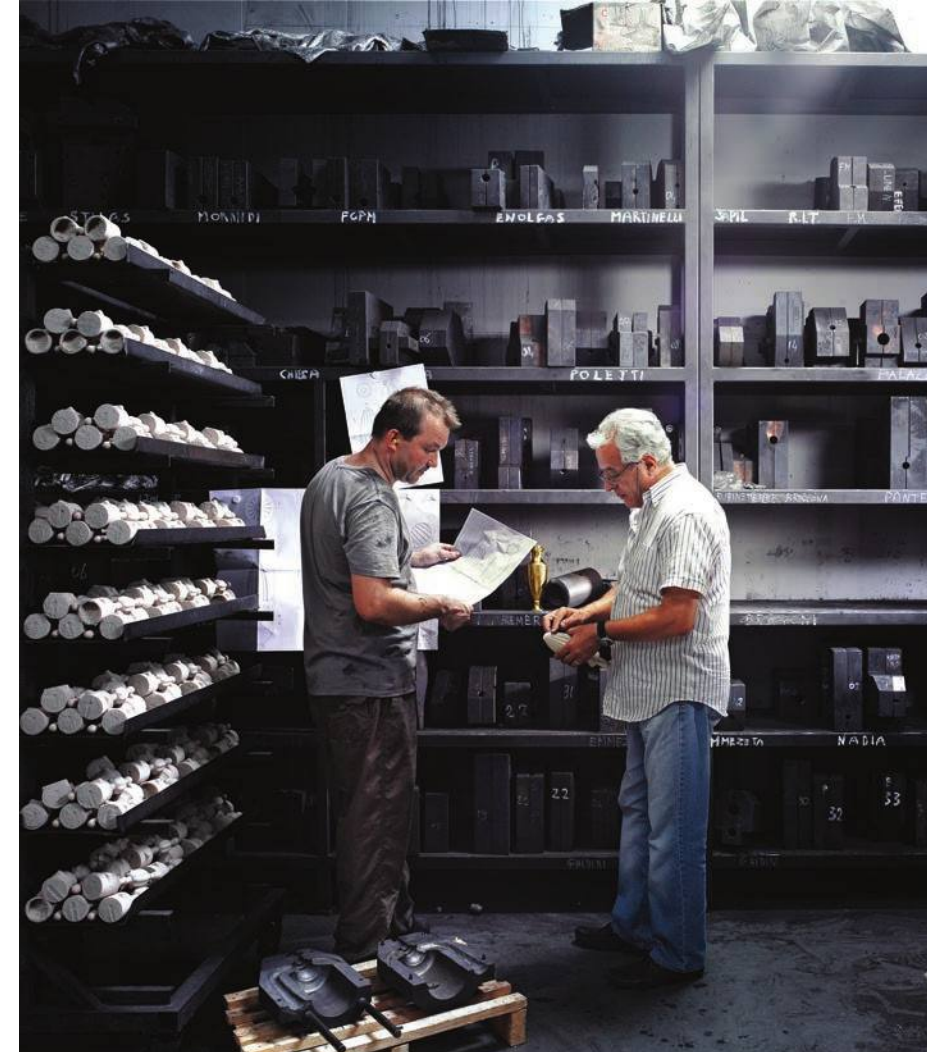


THE CRAFT

The entire production cycle takes place in-house and is characterised by a meticulous attention to detail: from the idea to the end product, passing through the various processing stages – from pressure die casting to lost wax and gravity casting, from machining to drilling, from satin-finishing to sand-blasting and polishing. These are the solid foundations of GHIDINI1961.

With over 50 years of history behind it, and an entrepreneurial wisdom that has been handed down from father to son, GHIDINI1961 presents furnishings, lamps and home accessories that are true testimonies of great Italian craftsmanship combined with state of the art production technologies, care for materials, aesthetics and attention to detail.

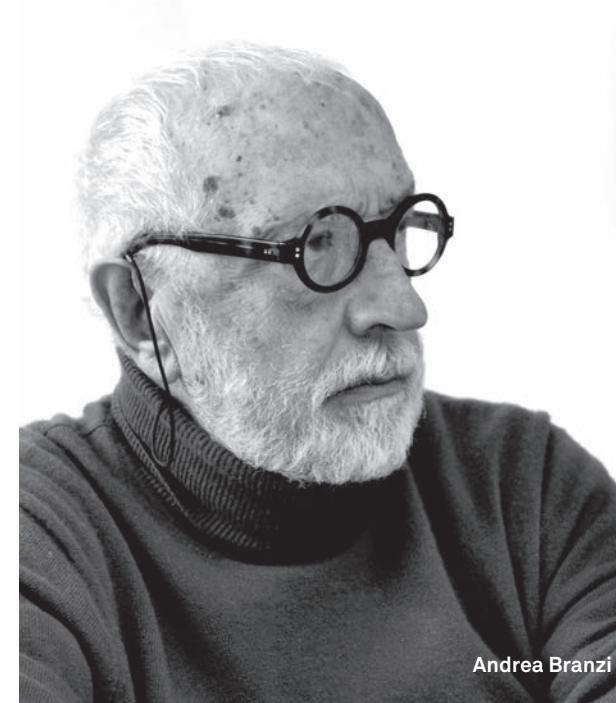
With this foundation, our products are not just meant to decorate a refined environment, but they represent something valuable, to be cared of, that can be passed over through generations thanks to its intrinsic and long lasting value blended with iconic and timeless design.



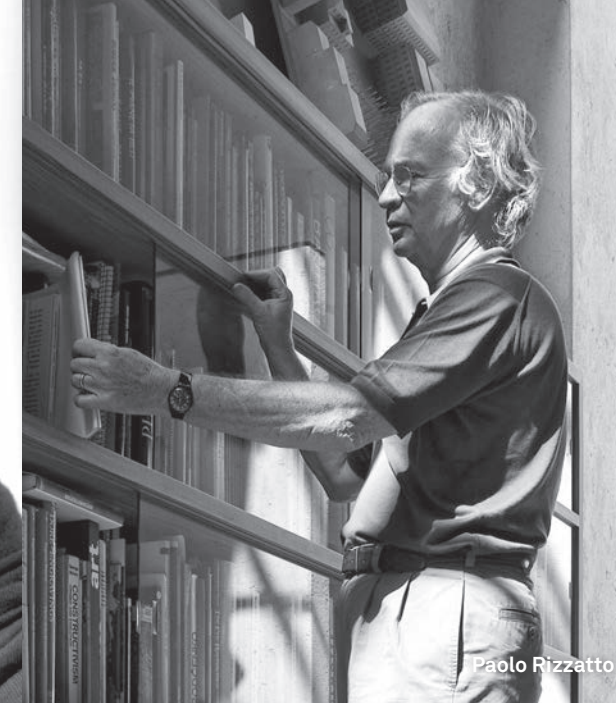
THE DESIGNERS

As Art Director, Stefano Giovannoni has put together a diversified creative team able to enhance the properties of brass. With this valued material which features golden tones and reflections, has developed a remarkable collection of items, furniture and accessories for daily use. All this products are characterised by innovative design and high quality manufacturing, creating an exclusive mood coherent with the nature and the best tradition of brass.

The collection has been designed by renowned international firms such as Aldo Cibic, Alessandro Mendini, Andrea Branzi, Branch Creative, Fernando and Humberto Campana, Noè Duchaufour-Lawrance, Setsu & Shinobu Ito, Richard Hutten, Elisa Giovannoni, Stefano Giovannoni, Paolo Rizzatto, Tomek Rygalik, Studio Job and Nika Zupanc. The collection ranges from large furniture statements to tiny golden accents that decorate and give warmth to stylish residential environments.



Andrea Branzi



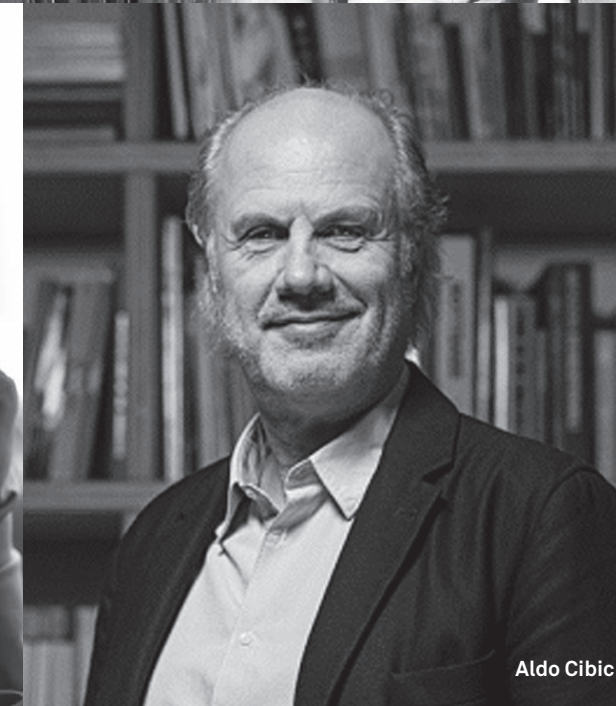
Paolo Rizzatto



Nika Zupanc



Alessandro Mendini



Aldo Cibic



Richard Hutten



Johanna Grawunder



Elisa Giovannoni



Noé Duchaufour-Lawrance



Lorenza Bozzoli



Campana Brothers



Studio Job



Branch Creative



Tomek Rygalik



Setsu&Shinobu Ito

THE PRODUCTS

The collection includes works of art, where metal acquires an almost sculptural power, upholstered furniture, dining tables, cabinets and finely chiseled home accessories, bearing witness to Ghidini's obsession for details. The series embrace almost all articles for use at home, which are interpreted in an unusual joyful way: from comfy and versatile sectional sofas, to very seductive, almost sculptural upholstered design statements, such as the Abbracci sofa, conceived Lorenza Bozzoli or Stefano Giovannoni's Frame collection, where geometric shapes are softened by the velvety surface of metal to create a sleek collection of sofas, armchairs, dining tables and bookshelves.

Giovannoni, who acts as Creative Director for the brand, has given life also to a series of other iconic products, such as the Shaker family, the Elephant sofa and armchair and the Native dining tables, that are all characterized by a very strong design language.

In its rich variety, the collection is a compendium of the most significant contemporary creative expressions, interpreted and enhanced by Ghidini's skillful expertise and ability to interpret metal in all its possible forms.



Leisure Sofa, design Lorenza Bozzoli

LEISURE

Modular sofa composed of two basic elements that are joined with a belt characterized by a brass buckle. The seat is deep and comfortable with soft and wide curves.





LEISURE ARMCHAIR Design Lorenza Bozzoli





Bridge Sofa, design Stefano Giovannoni

BRIDGE

A large sofa characterized by a generous shaped backrest that wraps the elliptical seat suspended between its powerful arms.
An iconic object of great expressive power capable of catalyzing the surrounding space.





BRIDGE SOFA Design Stefano Giovannoni



Bridge Sofa, design Stefano Giovannoni



Shaker Sofa and Armchair, design Stefano Giovannoni

SHAKER

Shaker is a sofa of memory and sophisticated elegance.

The rigorous layout of the cushions and the backrest is combined with precious metal elements that give to the product a strong identity.

The strap holding the armrests and wheels in continuity with the support feet, specifically designed by the designer, are die-cast with the quality and craftsmanship that distinguishes the company's heritage.







Abbracci Modular Sofa, design Lorenza Bozzoli

ABBRACCI MODULAR SOFA

A hug conveys love and friendship, encapsulating a thousand words with elegance and simplicity while sparking the serotonin of happiness and relaxation.





ABBRACCI MODULAR SOFA Design Lorenza Bozzoli



Abbracci Modular Sofa, design Lorenza Bozzoli



Abbracci Modular Sofa, design Lorenza Bozzoli



ABBRACCI MODULAR SOFA Design Lorenza Bozzoli



Elephant Sofa, design Stefano Giovannoni

ELEPHANT SOFA

A large sofa characterized by a fluid movement that shapes the backrest between elliptical sections lowering to create the armrests where the seat remains suspended in. Proposed here with an elegant finish in nubuck leather.





Elephant Sofa, design Stefano Giovannoni



Elephant Sofa, design Stefano Giovannoni



ELEPHANT ARMCHAIR Design Stefano Giovannoni



Tarantino Sofa, design Lorenza Bozzoli

TARANTINO

Soft and welcoming, this sofa is inspired by the 70's; a decade that changed our culture forever through freedom and self-discovery.

The Sofa invites you to a world of fantasy where you can indulge in the comfort and coziness of your passions.

Tarantino, as if following a skillful plot, lends itself to composing various original and alternative solutions integrated by the soft goose down cushions covered with textured cotton corduroy proposed in colors inspired by the 70s.





TARANTINO ARMCHAIR Design Lorenza Bozzoli



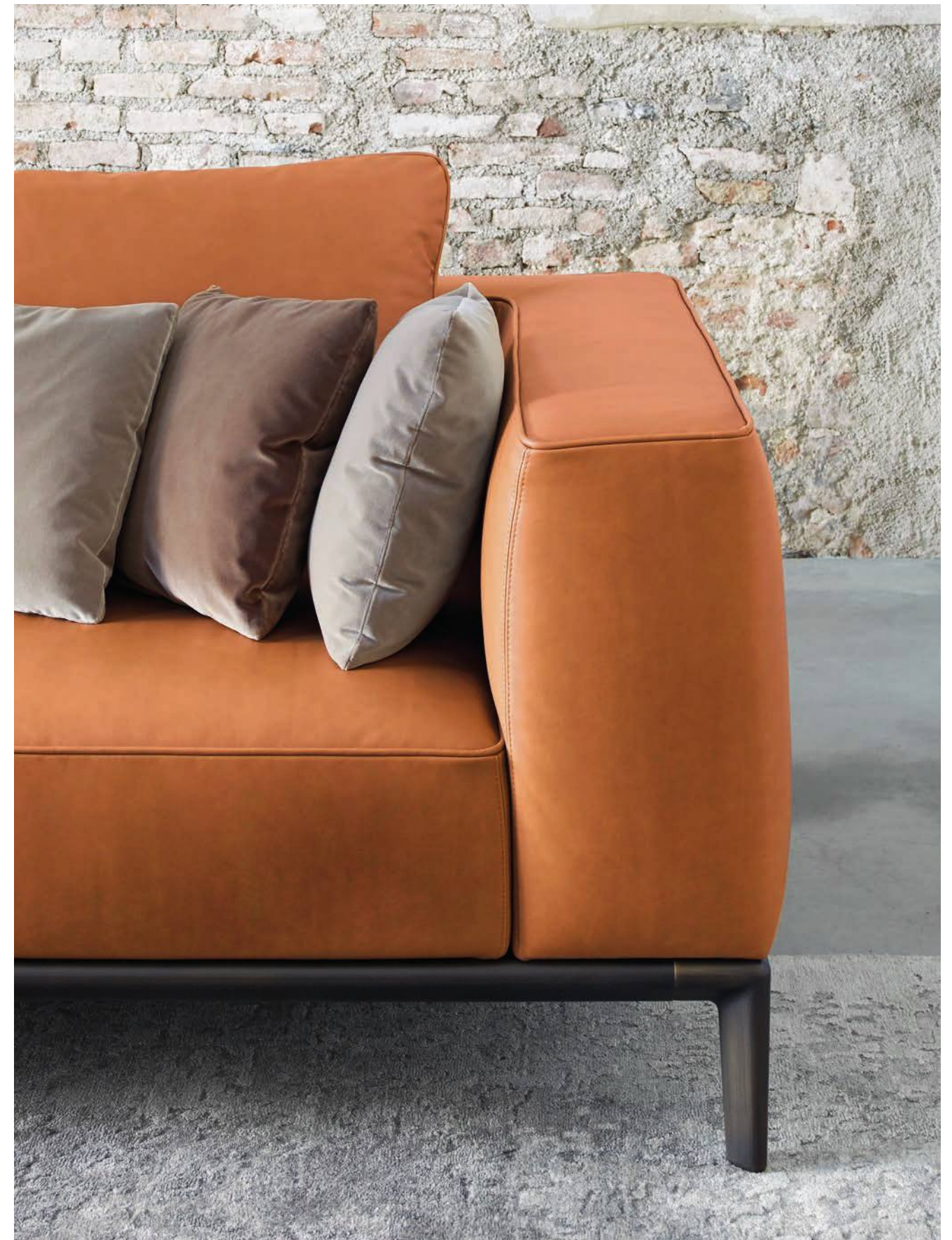
MILO SOFA

Milo is an evolution of the Frame sofa which adopts the same extruded aluminum profile, combined with a different joint and foot. The metal structure is now simplified and the frame, instead of rising to structure the armrest, supports the padded part composed by the seats and backrest. The foot bears the load of the frame, tapering its shape to flaunt a refined elegance.





Milo Sofa, design Stefano Giovannoni





Milo Sofa, design Stefano Giovannoni



Frame Collection, design Stefano Giovannoni

FRAME

A new collection composed of sofas, armchairs, dining and coffee tables, bookshelves and cabinets. Everything starts from a simple element: "the joint", which, combined with elegant rounded 45 degrees extrusions, creates an almost infinite family.

The collection is characterized by organic junctions that, in their possible combinations, create minimal, compact and powerful structures. Frame is built starting from few elements that are able to create a large family with essential lines.





FRAME SOFA Design Stefano Giovannoni



Frame Armchair and Frame Cabinet, design Stefano Giovannoni



Frame Dormeuse, design Stefano Giovannoni



FRAME DORMEUSE Design Stefano Giovannoni





BOLD

This family of products makes a bold statement with its generous cylindrical foot, connecting its structural perimeter while delimiting the objects that compose it.

The distinctive metal rim that supports the seats, the tables, the cabinets, graphically encompasses the material with which they are made. This is beautifully portrayed in the tables, where the marble tabletop matches with the legs in turned marble, or with the armchairs featuring leather seats and legs of the same color.





Bold Sofa and Lounge Chair, design Elisa Giovannoni





Abbracci Collection, design Lorenza Bozzoli

ABBRACCI SOFA

A hug conveys love and friendship, encapsulating a thousand words with elegance and simplicity while sparking the serotonin of happiness and relaxation.





ABBRACCI ARMCHAIR Design Lorenza Bozzoli





Abbracci Collection, design Lorenza Bozzoli



ABBRACCI OTTOMAN Design Lorenza Bozzoli



Infinito Sofa, design Lorenza Bozzoli

INFINITO SOFA

Infinite in endless seating compositions; and infinite in freedom of expression. This sofa, with only 3 elements, allows for a wide range of seating compositions, each with different depths.





Infinito Sofa and Side Table, design Lorenza Bozzoli



Infinito Sofa and Side Table, design Lorenza Bozzoli



INFINITO SOFA Design Lorenza Bozzoli



INFINITO ARMCHAIR Design Lorenza Bozzoli



Infinito Sofa, design Lorenza Bozzoli

DODO SOFA

Dodo is a variant of the Frame sofa where the supporting structure on which the seat rests is lowered, giving it greater consistency. The supporting frame brushes the floor without touching it, while the generous height of the seat cushions provides great comfort.







DODO ARMCHAIR Design Stefano Giovannoni



KATANA SOFA

The sofa refers to the iconic and seductive shapes of the classic Chesterfield, reinterpreted with renewed elegance, and thanks to the gentle curvature of the leg it resolves the connection with the seat and the back. This makes it enveloping and comfortable, its height and width support a relaxed sociability. In the elliptical leg, every millimeter has been designed and calibrated, as well as the relationship between seating and structure.

Fittings and lines, grafts and joints, everything is designed for the best harmony. The dialogue between the parties, as in architecture, is for the Milanese architect a perfect orchestration.





Katana Sofa and Lounge Chair, design Paolo Rizzatto

KATANA

The series of seatings “Katana” identify and combine in a balanced synthesis the three elements that characterize seats (the legs, the seat, the backrest), but at the same time makes them understandable one separated from the other, enhancing in that way the different specific characteristics and mutual relations.



KATANA LOUNGE CHAIR Design Paolo Rizzatto



Katana Lounge Chair, design Paolo Rizzatto



KATANA ARMCHAIR Design Paolo Rizzatto



Katana Armchair, design Paolo Rizzatto

PORTOFINO SOFA

The Portofino reimagines the classic Chester sofa by deconstructing it to make it contemporary and modular. Composed by a variety of elements, this sofa becomes an object of memory and at the same time innovative, adaptable to a multiple variety of contexts.





Portofino Sofa, design Stefano Giovannoni



Portofino Sofa, design Stefano Giovannoni



Portofino Sofa, design Stefano Giovannoni



PORTOFINO ARMCHAIR Design Stefano Giovannoni





Opera Sofa, design Giovannoni Design Studio

OPERA SOFA

Here, the classic Chester is revisited with a dreamlike language through the roundness of the shapes and the fluidity of the lines, while the backrest, unlike the Portofino, maintains the classic capitonné.





Opera Sofa, design Giovannoni Design Studio



OPERA ARMCHAIR Design Giovannoni Design Studio



Sweet Lounge Chair and Ottoman, design Elisa Giovannoni

SWEET

The design of the armchair takes place by subtracting material from a full spheroidal shape, as if a large spoon created a seat inside a yeasted cake.

Inside it is a classic bergère while the rear view projects a more sculptural and prominent presence. A cozy and sweet “Panettone” where you can sit resting your feet on a soft ottoman.



SWEET LOUNGE CHAIR Design Elisa Giovannoni

SIPARIO

The draped Nabuk backrest recalls a stage curtain:
Like a drape that closes the stage in theaters, here
gently wraps the soft seat of small dimensions
of this lounge chair.





Bucket Lounge Chair, design Elisa Giovannoni

BUCKET

A conical and regular shape reminiscent of an upside down bucket encloses the soft seat cushion, the backrest sets like a detail and can have different heights, depending on the type of seat. The design, which is made up of different aggregated elements, allows you to freely combine materials and colors together and to give character to this armchair with fashionable connotations, where the detail becomes the protagonist.



BUCKET LOUNGE CHAIR Design Elisa Giovannoni



BUCKET BERGERE Design Elisa Giovannoni



Bucket Bergere, design Elisa Giovannoni

OTTANTA

Large dining table made of natural or dark oak. The legs placed at the corners of the table top are positioned at 45 ° with an aesthetic inspired by the 80s of the last century.



Ottanta Dining Table, design Lorenza Bozzoli





Ottanta Dining Table, design Lorenza Bozzoli



OTTANTA DINING TABLE Design Lorenza Bozzoli



LOCUST

A table characterized by an elegant movement of sharp surfaces that join the top with the legs. The result is a large table with a refined and nervous design that evokes an insect in tension, ready to snap.





Shaker Dining Table, design Stefano Giovannoni

SHAKER TABLES

A large six-legged table, a classic object wisely redesigned to bring it back to a contemporary dimension.

The elegant metal wheel that characterizes the sofa is proposed here as the end of the sinuous turned legs, allowing the table to be moved.

The Shaker table is made of cherry wood or matt black lacquered wood.





Shaker Dining Table, design Stefano Giovannoni



SHAKER DINING TABLE Design Stefano Giovannoni

FRAME TABLE

A new collection composed of sofas, armchairs, dining and coffee tables, bookshelves and cabinets. Everything starts from a simple element: "the joint", which, combined with elegant rounded 45 degrees extrusions, creates an almost infinite family.



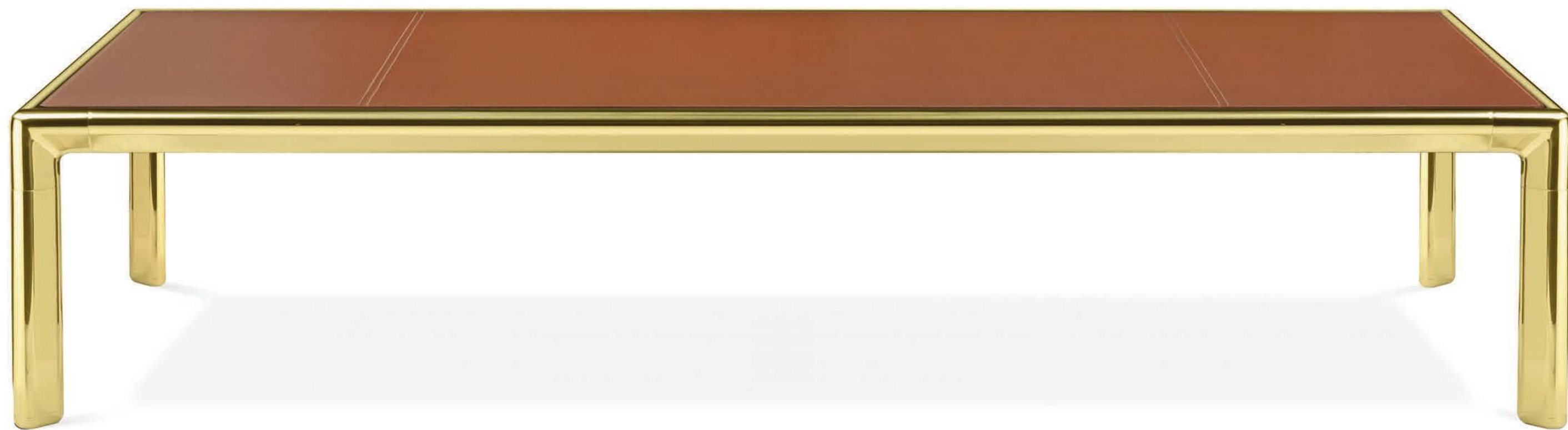
Frame Dining Table, design Stefano Giovannoni





FRAME DINING TABLE Design Stefano Giovannoni

Frame Dining Table, design Stefano Giovannoni





Bold Dining Table and Armchair, design Elisa Giovannoni

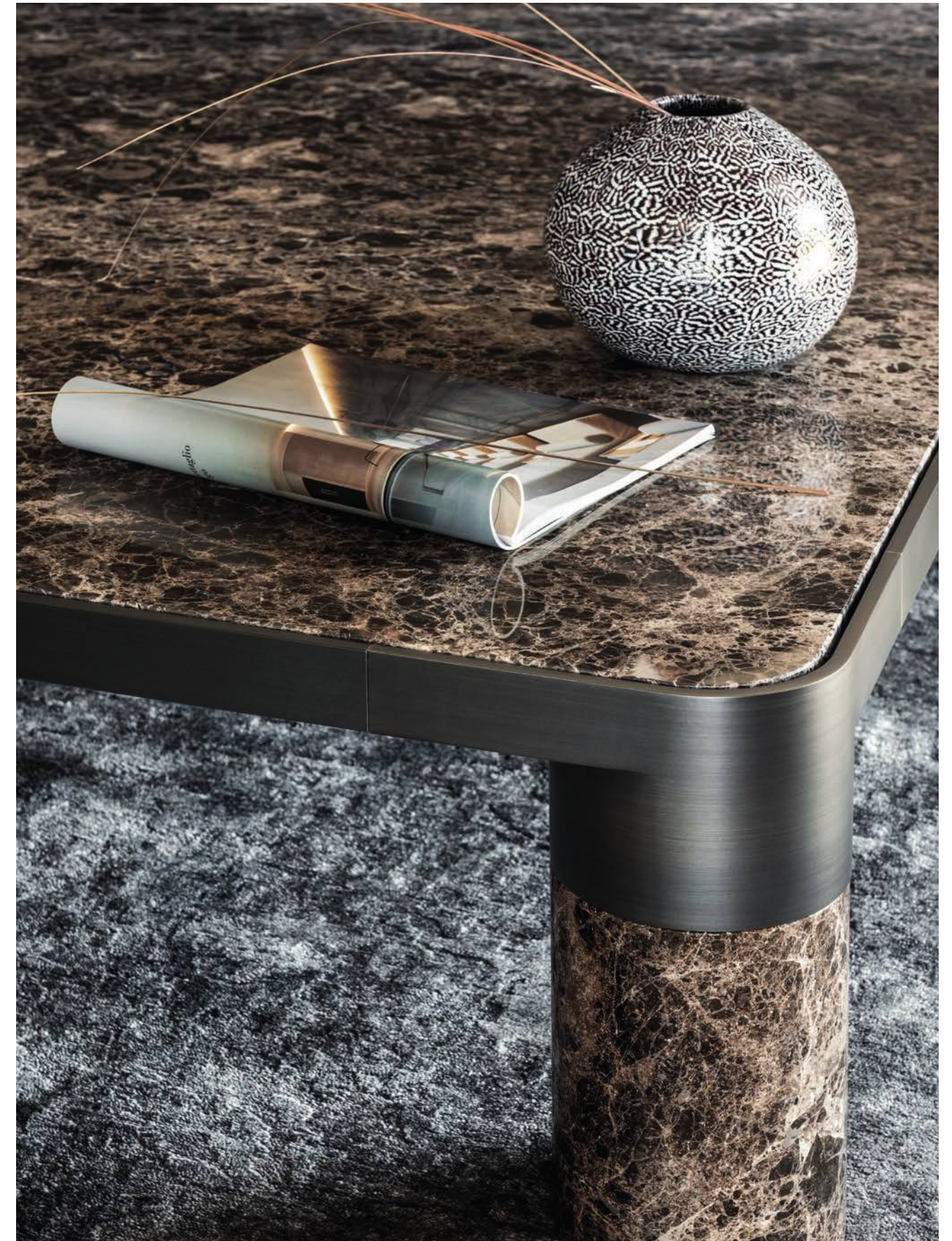




BOLD ARMCHAIR Design Elisa Giovannoni



Bold Armchair, design Elisa Giovannoni

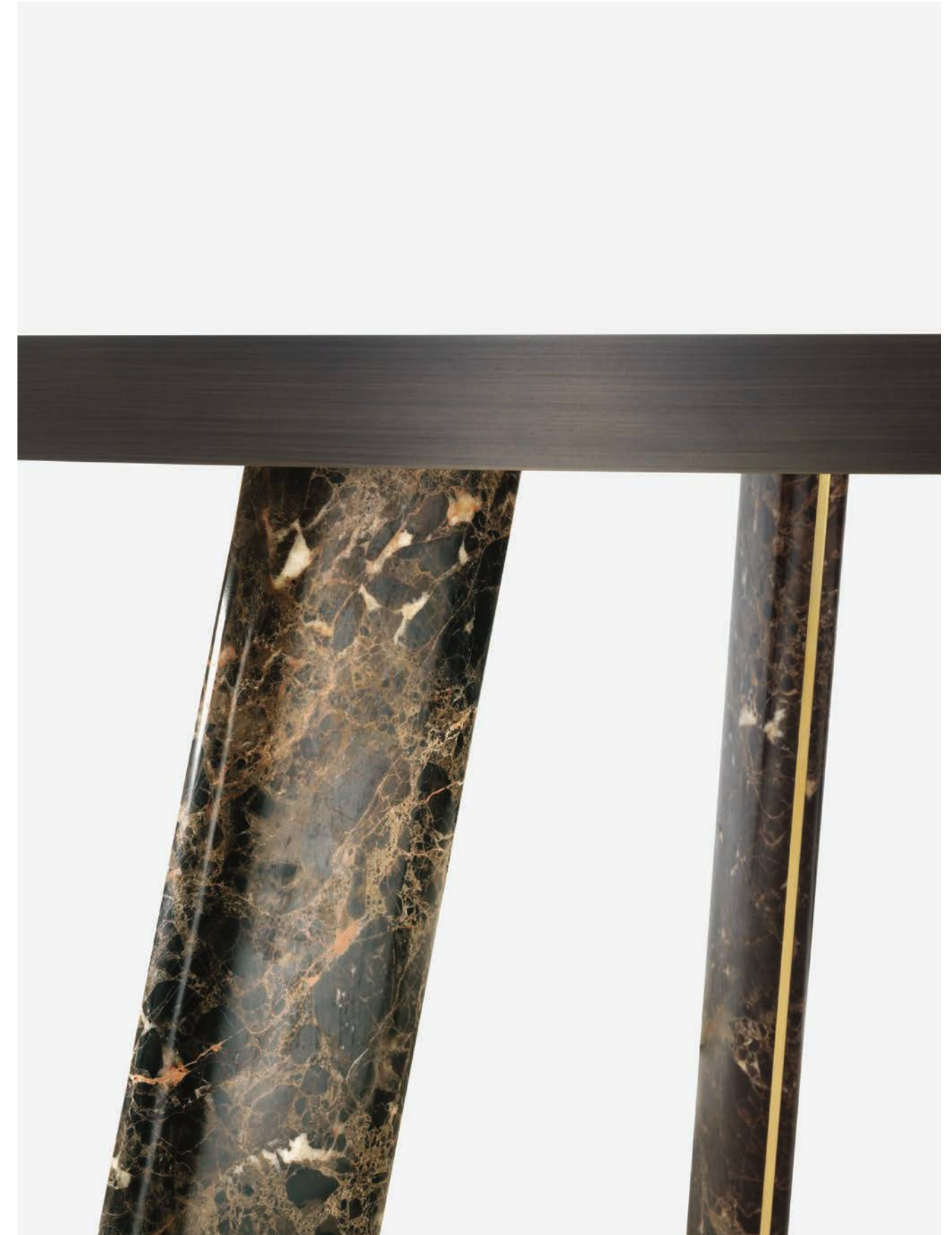




Native Rectangular Table, design Stefano Giovannoni

NATIVE

Native tables are pure objects that, in their archetypal essentiality become new classics. Available in two versions: round or rectangular rounded on the corners in oak or marble, with the top edge in burnished metal.





Coast Table and Chair, design Branch Creative

COAST CHAIR

Inspired by the Northern California coastline, the Coast Chair's design draws its influence from a landscape of wandering, golden hills and the meandering roads that intersect them. Blending refined architectural elements with fluid gestures, the chair's form brings surprising design moments to a functional, everyday object.



BOTANY TABLE

Family of tables characterized by the elegant and sophisticated metal structure supporting the tabletop. Inspiration comes from turn of century outdoor furniture meeting modern high-quality metal crafting. Intricate weaving of gilded rods creates a beautiful visually light three-dimensional ornament.



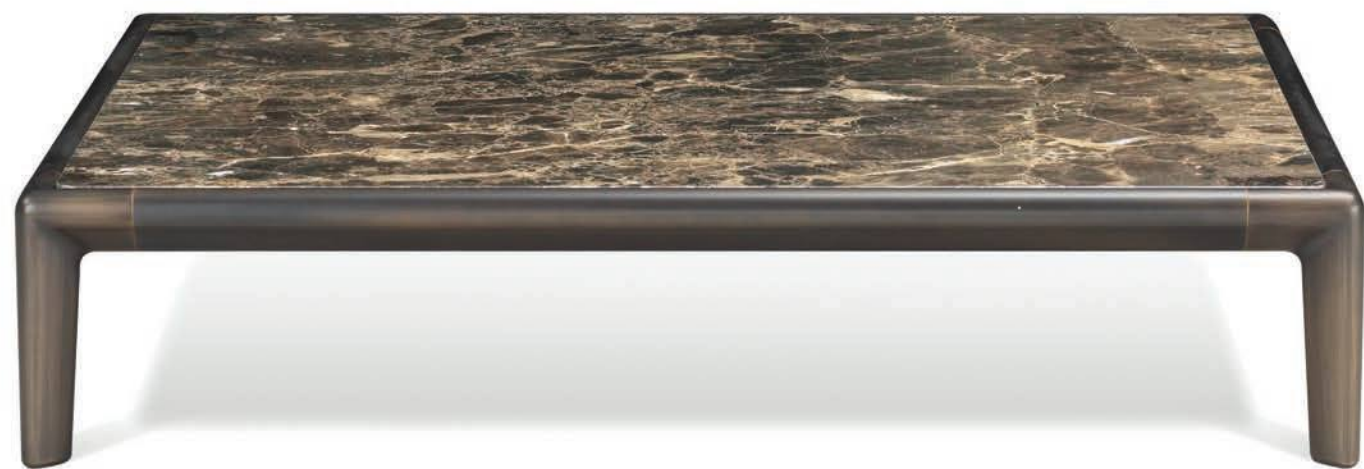
LEGS TABLE

From the idea of almost a unique object in its perfect craftsmanship, to the system to be built starting from the base. A column made of brass that multiplies to infinity, to be interrupted and resumed to hold glass tops, wood or marble to configure even angular shelves and tables of any sizes and shapes.

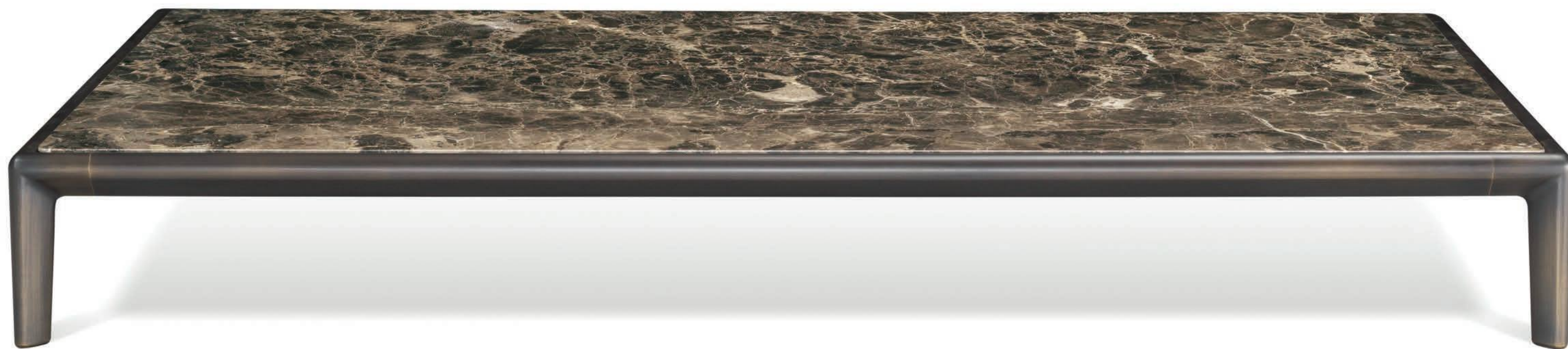


MILO COFFEE TABLE

Milo coffee table adopts the same extruded aluminium profile of the Frame tables. The foot bears the load of the frame, tapering its shape to flaunt a refined elegance.



Milo Coffee Table, design Stefano Giovannoni





Tarantino Living Cabinet, design Lorenza Bozzoli

TARANTINO LIVING CABINET

The “Tarantino Django” is a low living cabinet in dark oak with shelves and open compartment prepared with cable holes for media and infotainment connections. The cylindrical elements in aluminum characterize the aesthetics of the “Tarantino” series with the function of handles.



TARANTINO DINING CABINET

The "Tarantino Gloria" is a dining cabinet in oak with shelves and curved side doors. The cylindrical elements in aluminum perform the function of handles.



Tarantino Dining Cabinet, design Lorenza Bozzoli





Tarantino Dining Cabinet, design Lorenza Bozzoli



TARANTINO DINING CABINET Design Lorenza Bozzoli

TARANTINO BAR CABINET

The “Tarantino Manhattan” is an oak bar cabinet with pull-out top, drawers and side compartments to hold glasses and bottles with internal lighting.

The aluminum cylinders that run vertically around the piece of furniture are, as in the whole “Tarantino” collection, the characterizing element, and in this case, they perform the function of handle. The open compartment for preparing cocktails is illuminated by a warm ambient light.





TARANTINO BAR CABINET Design Lorenza Bozzoli



TARANTINO BAR CABINET Design Lorenza Bozzoli



Tarantino Bar Cabinet, design Lorenza Bozzoli



TARANTINO BAR CABINET Design Lorenza Bozzoli

FRAME LIVING CABINET

The Frame collection is composed of sofas, armchairs, dining and coffee tables, bookshelves and cabinets. Everything starts from a simple element: “the joint”, which, combined with elegant rounded 45 degrees extrusions, creates an almost infinite family. In this case a simple structure based on Frame extruded aluminium profile sustains pure wooden monolith.





FRAME BOOKSHELVES

The Frame bookshelves and table are characterized by metal organic junctions that, in their possible combinations, create minimal, compact and powerful structures. The bookshelves consist of a couple of vertical metal structures which create a bridge in combination with horizontal wooden shelves, while a X shaped tie rods keep together the structural elements.





FRAME BOOKSHELVES Design Stefano Giovannoni

Frame Bookshelves, design Stefano Giovannoni

BOLD LIVING CABINET

This family of products makes a bold statement with its generous cylindrical foot, connecting its structural perimeter while delimiting the objects that compose it. With the massive dimensions and the softness of the fittings, the materials are enhanced in their characteristics creating a sculptural effect and giving a distinct personality to each element of the collection. Winner of Wallpaper Design Awards in furniture category.





Bold Living Cabinet and Ottoman, design Elisa Giovannoni



BOLD DINING CABINET

The distinctive metal rim that supports the seats, the tables, the cabinets, graphically encompasses the material with which they are made. This feature is beautifully portrayed in the cabinets, where its profile goes up to define pure and simple wooden volumes with rounded corners.



Bold Dining Cabinet, design Elisa Giovannoni



ZUAN

Different cultural references and needs in time and space are combined in the Zuan cabinet collection.

The classic types of Oriental timeless “cabinets” and the eighteenth-century English “chests” are revisited and updated.

The single piece combines three materials in a variable and versatile way: brass, wood and marble. The brass for the support frames and partition walls, the wood for the containers and the marble for the support surfaces.



Zuan Living Cabinet, design Paolo Rizzatto



ZUAN LIVING CABINET

Elegant family of cabinets with essential lines of Oriental flavor. The slender structure in essence is opposed by four slim legs in gilded metal. Each Zuan is recognizable by the detail of the support, a quarter of a circle with great aesthetic and functionality, which defines the character of the storage unit.







ZUAN LARGE CABINET

The upper part of the cabinet is divided into four sections, in turn divided into smaller niches, drawn according to the golden proportion, inscribable in a perfect spiral. A wunderkabinet to exhibit our wonders.





Zuan Living Cabinet, design Paolo Rizzatto



ZUAN LIVING CABINET Design Paolo Rizzatto



Zuan Dining Cabinet, design Paolo Rizzatto



ZUAN DINING CABINET Design Paolo Rizzatto

LEGS BOOKSHELVES

From the idea of almost a unique object in its perfect craftsmanship, to the system to be built starting from the base. A column made of brass that multiplies to infinity, to be interrupted and resumed to hold glass tops, wood or marble to configure even angular shelves and tables of any sizes and shapes.





INCROCIO Design Andrea Branzi



PORTO CONSOLE Design Andrea Branzi

ONE ON ONE TABLE LAMP

This lamp speaks to the unique ability to light up different sections of the lamp body, and it expresses and inspires intimacy while talking with someone one on one.

The One on One is composed by two blown glass elements, with the lower being metalized and housing an internal glass cylinder to give a sculptural effect to the light source. The upper glass is frosted to provide a significant brightness.



One On One Table Lamp, design Branch Creative



Jackfruit Table Lamp, design Campana Brothers

JACKFRUIT TABLE LAMP

The Jackfruit it is composed of two overlapping cylinders, the large stem supports an important brass lampshade decorated with a thousand leaves bent by the wind. The perforated structure and the opening of the lampshade create suggestive radiations of light, like light passing through the dense foliage of a tropical forest.



JACKFRUIT TABLE LAMP Design Campana Brothers

DUSK DAWN

"It's the time when the sun drops below the horizon, leaving a glow that signals the arrival of the night, and gently takes us back to the warm embrace of dawn light in the morning."
An intersection game of two forms to define a soft and geometric tone, a cloud of light arising from the glass diffuser seated on a solid brass cone.



MIO BIO TRIO

Mio, Bio and Trio are born from the idea of creating a gentle form, light but consistent and timeless, using brass as a single material.

Thanks to the versatility of the rod it is possible to create articulated and original structures, while the sheets allows to realize the lampshades which spread a golden light, warm and soft. “

The satinated finish give these sleek table lamps a refined and understated allure allowing them to easily feature in residential, hospitality and office environments.



CAN CAN

Can Can is a kick of light up and down. A multi-directional light, adjustable for maximum flexibility and effect, Can Can easily becomes task, accent and ambient light all at once. With Can Can, light is a result of personalized choreography. Light is a subjective quality: Can Can gives options.



CAN CAN TABLE LAMP Design Johanna Grawunder



Can Can Floor Lamp, design Johanna Grawunder





CAN CAN ROUND SUSPENSION LIGHT Design Johanna Grawunder



Factory Lamp, design Elisa Giovannoni



SFERE DOUBLE Design Paolo Rizzatto



INDIPENDANT

The inspiration came from utilitarian factory lamps. The key element is the way they hang. A simple, elegant pendant lamp which works in many different environments. The brass gives a warm reflection and they can be used both at home as well as in commercial environments such as shops and restaurants.

GIOIELLO MIRRORS

These pieces instantly evoke stardust-spangled memories of exotic empires past. A titillating triumph that turns the spirit of endless summer malaise into excitement, and distanced detachment into a visceral desire to shop, to have, to run your hands over exquisitely polished surfaces.



GIOIELLO ROUND MIRROR Design Nika Zupanc



Gioiello Free Standing Mirror, design Nika Zupanc

KALEIDOS

Large sculptural wall light in stainless steel.

The piece is composed of six mirror blades. The gilded mirrors create a kaleidoscope of golden tones and reflections. The piece can be used as a lamp as it is backlit', explains Fernando Campana. And Humberto adds 'It will be a mirror with the possibility of different sizes and colors. A geometric piece that can produce various designs. We were inspired by Lygia Clark's Bicho critter sculptures'.



Kaleidos, design Campana Brothers

TAKE ME TO MIAMI

These pieces instantly evoke stardust-spangled memories of exotic empires past. A titillating triumph that turns the spirit of endless summer malaise into excitement, and distanced detachment into a visceral desire to shop, to have, to run your hands over exquisitely polished surfaces.



SUNSET MIRROR Design Nika Zupanc



Take me to Miami, design Nika Zupanc



Fan Mirror, design Setsu & Shinobu Ito



FAN MIRROR Design Setsu & Shinobu Ito



Frying Pan, design Studio Job



Portrait with birdie, design Elisa Giovannoni

LEPORELLO

The height-adjustable stool, subject of which you can appreciate the adaptability with a gesture, in different contexts and users, becomes a precious object, with light or dark oak legs slightly bent and round seat in die casted brass.



LEPORELLO JUNIOR Design Paolo Rizzatto



LEPORELLO SENIOR Design Paolo Rizzatto



DA VINCI TABLE Design Richard Hutten



FLOWERS TABLE Design Stefano Giovannoni



OPERA TABLES Design Richard Hutten



TUMBRELLA & BUTLER UMBRELLA STANDS Design Richard Hutten

BUTTERFLY

Coats flit from coat hanger to coat hanger like butterflies go from one flower to another. Butterflies have been a source of inspiration through art history. From the ancient Egypt, to the Renaissance until now it has always been a theme. The Butterfly coat hanger is both playful and elegant. Available in a single version too – to be hung to the wall.



BUTTERFLY COAT RACK Design Richard Hutten

JACKFRUIT

Jackfruit is a numbered vases edition, an object that for its exclusivity completes every environment with its strong sculptural presence.

The vases are available in two different finishes. The first is a single block of hand casted bronze. The second mixes two materials, brass and wood, and is divided into three sections: the upper and lower are composed of an articulated brass casting, the central part is in wood. Both are presented as absolute protagonists of the living.



TORNADO

Spiral of super-glossy brass, a dizzying vortex of reflected light. A thousand liquid rings rise from a hypothetical sea, expand and crown themselves with fragrant flowers. It's a highly evocative object, fascinating for its shape and shine.

The one designed by the Campana Brothers is a good tornado, the only one that brings color and light into the home.





HERE (THIMBLE) Design Studio Job



Nowhere (bullet vase), design Studio Job



THERE (PUSH PIN) Design Studio Job



Omini Bowls, design Stefano Giovannoni



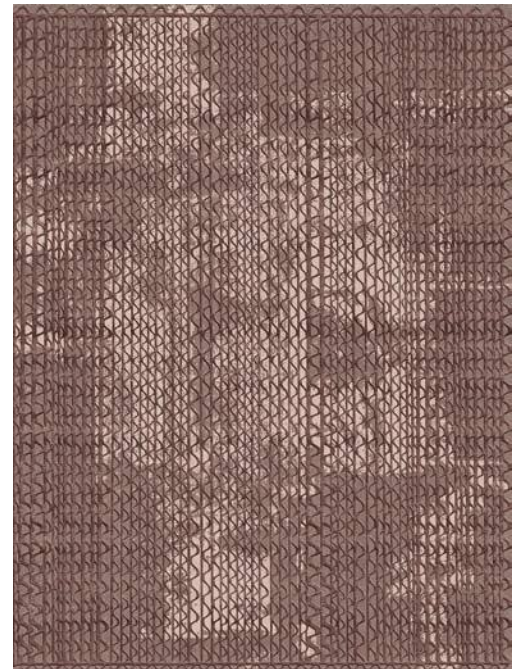
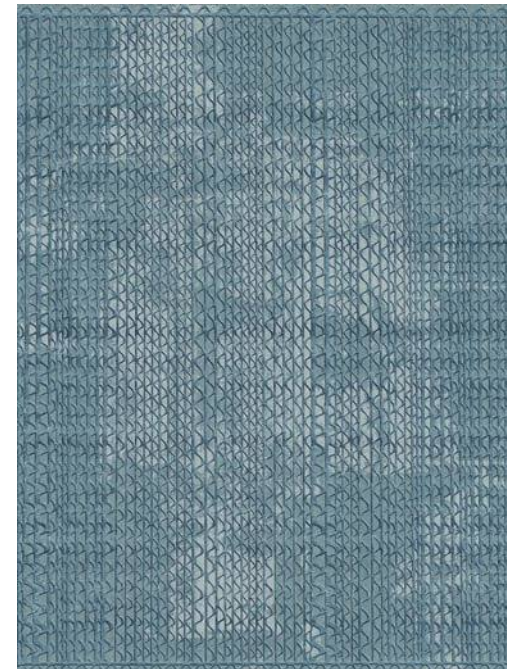
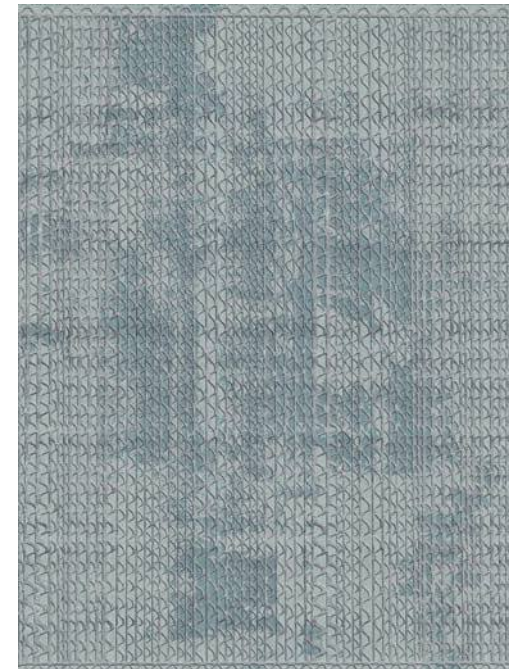
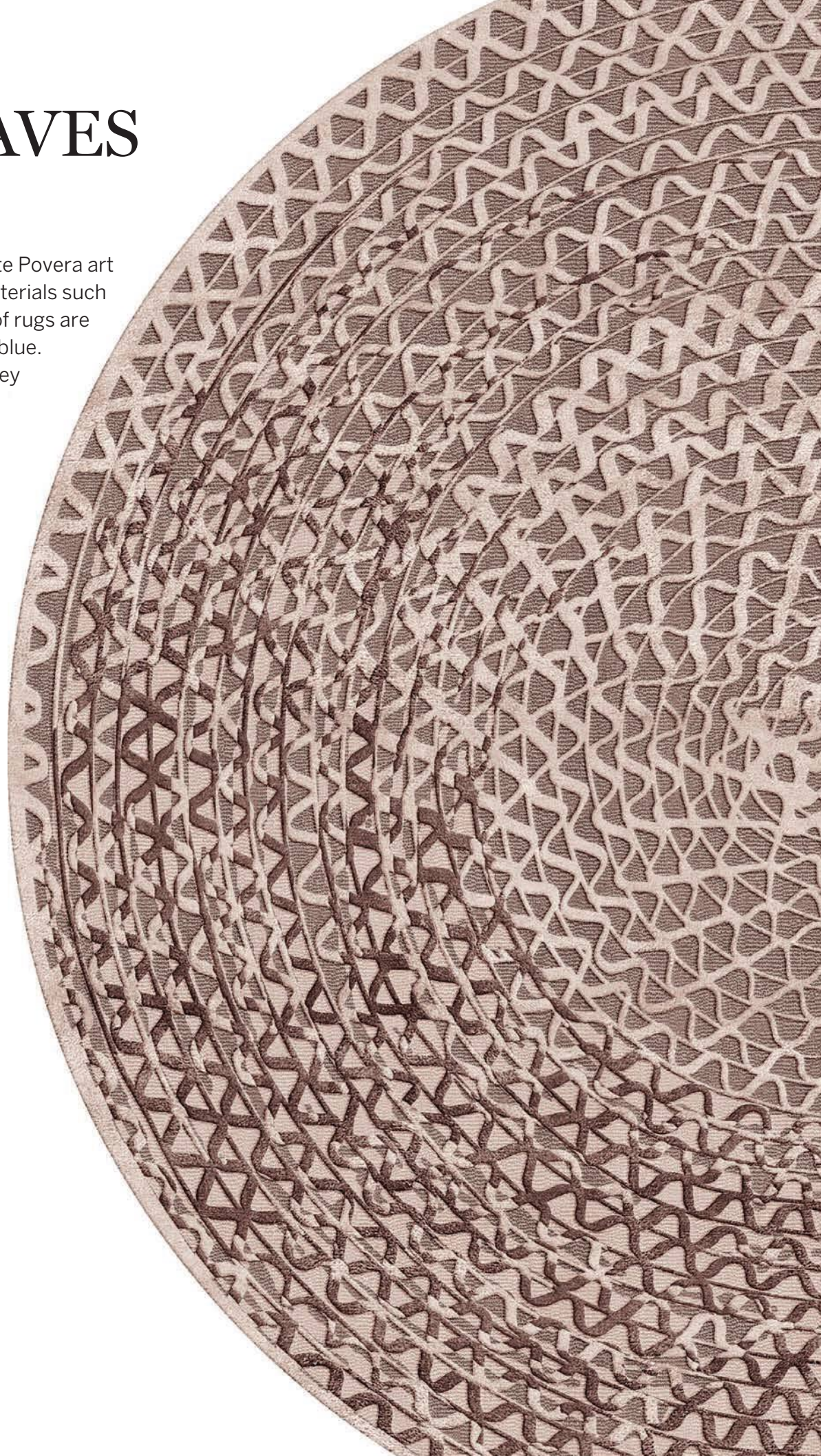
Cestini Collection, design Andrea Branzi



Flirt Collection, design Noé Duchaufour-Lawrance

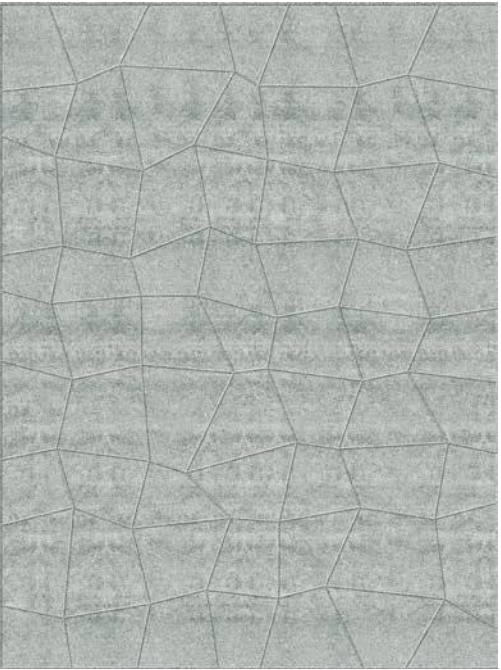
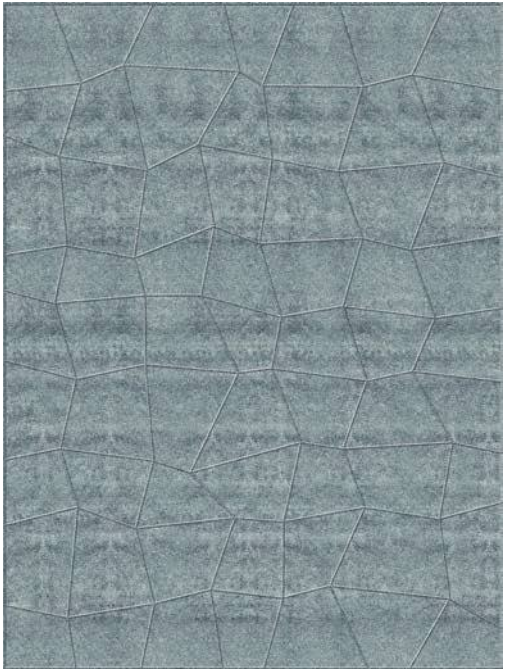
TRIPLE WAVES RUGS

Inspired by the experimentation of Arte Povera art of the seventies that used unusual materials such as corrugated cardboard, this family of rugs are available in shades of beige, gray and blue. The important dimensions in which they are proposed can be customized on customer request.



CONNECT RUGS

Made of natural materials in different textures, the Connect rugs bring warmth to any room. The rich monochrome color palette in a variety of shades will be the center of your space.





MATERIALS COLLECTION 2022

METAL FINISHES



Polished brass PB



Chrome CH



Satin Platinum SP



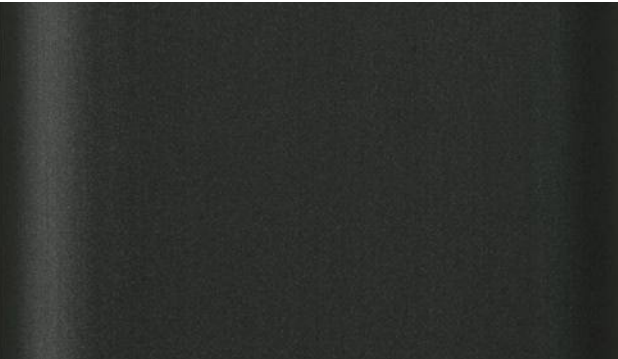
Orbital Bronze OB



Satin brass SB



Light burnished brass LB



Satin Titanium ST



Brushed Copper BC



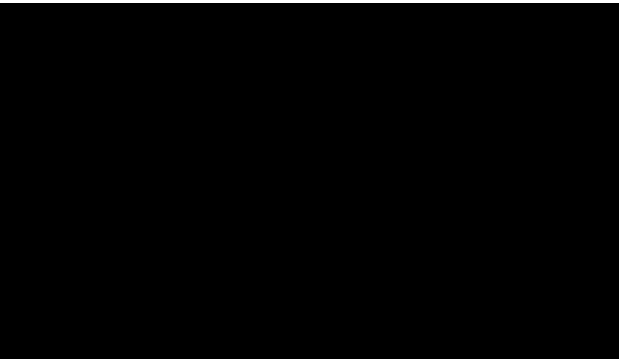
Dark burnished brass DB



Black Gold BG



Deep Anthracite DA



Deep Black DB



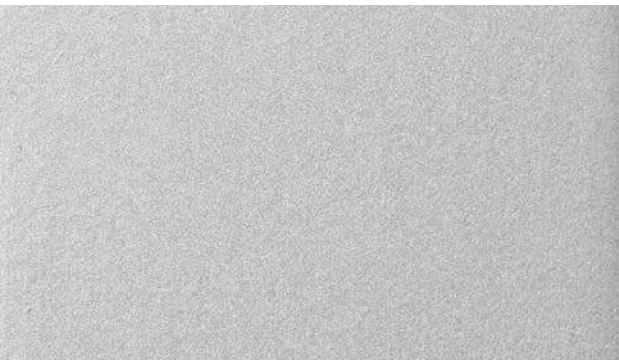
Brown burnished brass BB



Brushed Silver BS



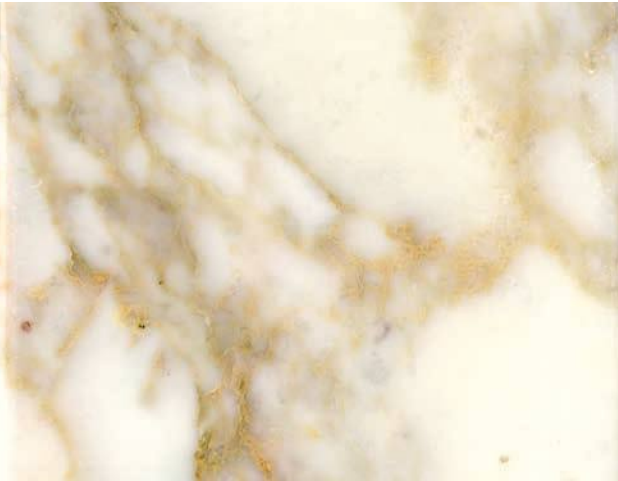
Deep Gold DG



Deep Silver DS

ALL OUR FINISHES ARE HANDMADE, AND ALL SURFACES ARE LACQUERED TO PROVIDE A LONG LASTING DURABILITY

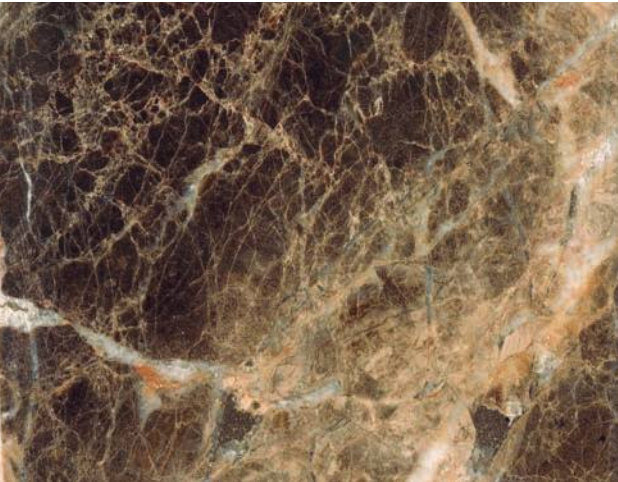
MARBLE COLLECTION



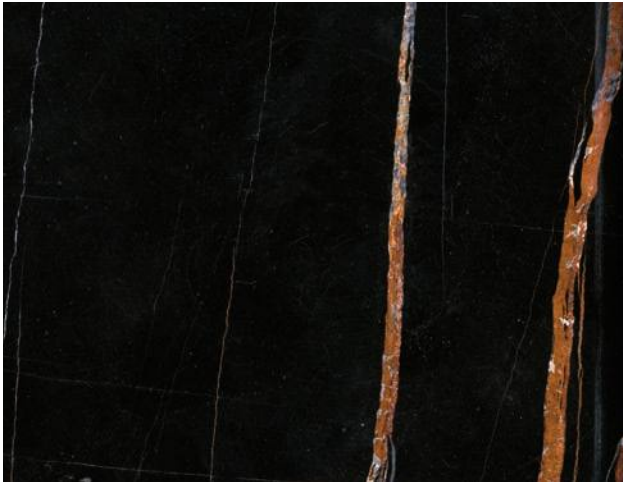
Calacatta Gold CG



Carrara White CW



Emperador Dark ED



Sahara Noir SN



Verde Alpi VA

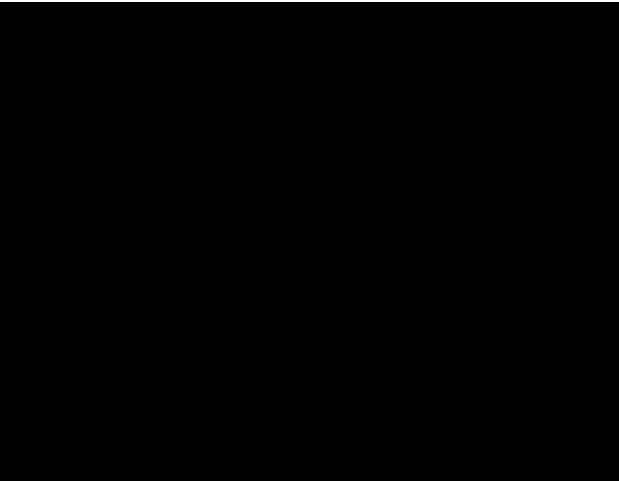


Travertino TV

WOODS COLLECTION



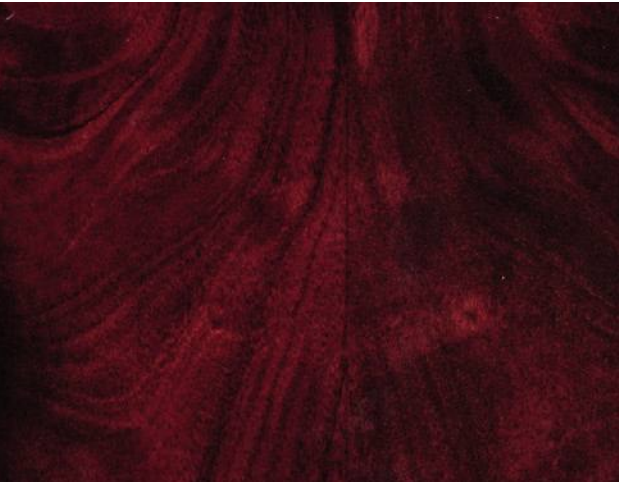
Natural Oak



Bolivar



Canaletto Walnut



Mahogany



New Lime



Caleido

CLUNIS



Category
Bouclé

Composition
33%WO-25%PL-25%PC-15%CO-2%PA
Width: 137 cm+/- 3%
Weight: 4935 gr/ml - 682 gr/sqm +/- 5%
Martindale: 40000 cycles+/-

Flame resistance
BS 5852-1 (1979) CIGARETTE
BS 5852:2006 CIGARETTE
BS 5852-1 (1979) MATCH
BS 5852:2006 MATCH
CAL TB 117:2013

Washing Instructions

002



002



006



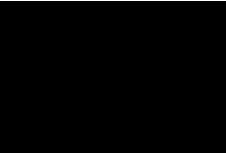
028



026



000



029



030



020



025

SOFI



Category
Cotton and viscose frisé

Composition
46%CO-47%VI-7%LI
Width: 850 gr/ml - 607 gr/sqm +/- 5%
Weight: 850 gr/ml - 607 gr/sqm +/- 5%
Martindale: 27000 cycles +/- 10%

Flame resistance
BS 5852:2006 CIGARETTE
BS 5852-1 (1979) MATCH
BS 5852:2006 MATCH

Washing Instructions

187101



187-101



187-000



187-100



187-029

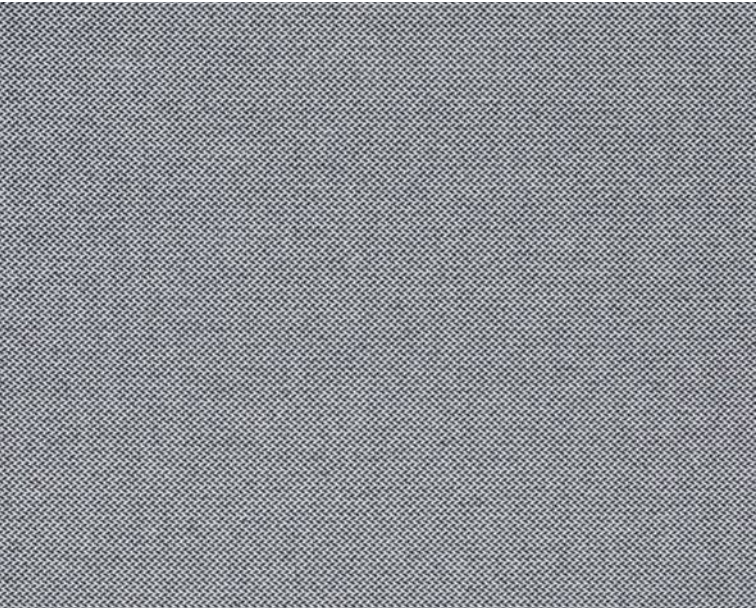


187-090



187-062

REVIVE



Category
Kvadrat upholstery

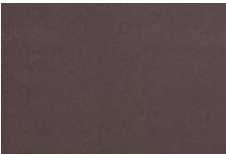
Composition
100% recycled polyester FR
Width: Approx. 140 cm (Approx. 55")
Weight: 420 g/lin. m (13.55 oz/ly)
Martindale: 60.000
Sustainability: Greenguard Gold, HPD, EPD

Flame resistance
BS 5852 Crib 5 with treatment, EN 1021-1/2, DIN 4102 B1, IMO FTP Code 2010: Part 8, NF D 60 013 with treatment, Önorm B1/Q1, UNI 9175 1IM, US Cal. Bull. 117-2013

0154



0154



0274



0324



0434



0454

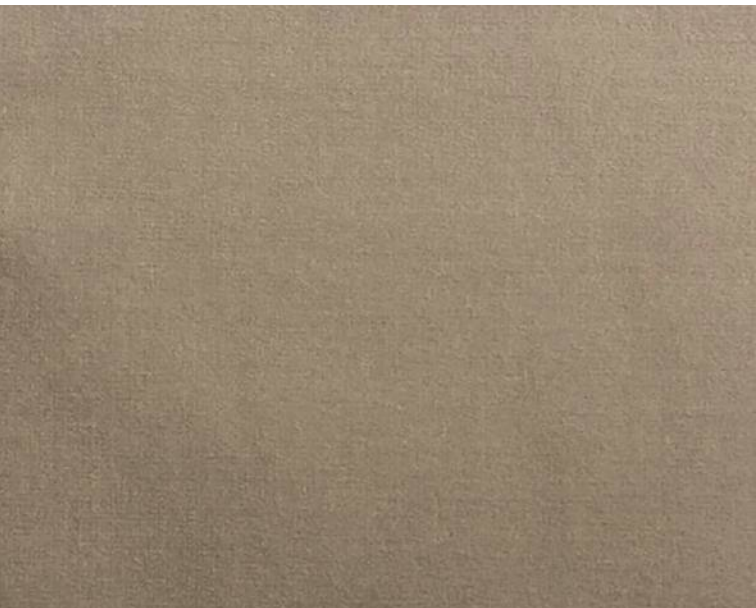


0944



0974

ADAMO & EVA



Category
Cotton Velvet

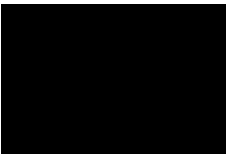
Composition
100%CO
Weight: g/ml 630
Width: cm 140 – 55.12 inches
Cfa: Yes
Martindale: 50.000

Washing Instructions

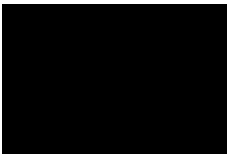
129 - roccia



116 - cayenne



119 - prugna



106 - mirtillo



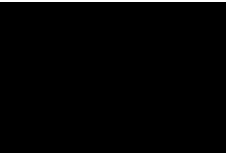
168 - mousse



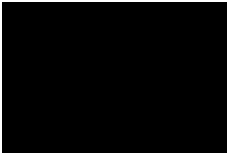
145 - olive



129 - roccia



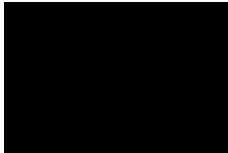
107 - antracite



169 - cactus



104 - indigo



170 - notte



175 - fumo



137 - cenere



178 - ostrica

An exquisite quality of Italian-made cotton velvet that is soft, versatile and hard-wearing. A palette of 13 colours comprising striking, traditional and neutral shades.

TABULARASA

Only for Love chair



161 - malachite



103 - ninfea



161 - malachite



156 - ottanio



rose - 173

Category
Cotton Satin

Composition
100%CO
Weight: g/ml 469
Width: cm 140 – 55.12 inches
Cfa: Yes
Martindale: 30.000

Washing Instructions

An elegantly modern cotton satin whose sheen enhances an extraordinary colour palette. Versatile and hardwearing, it provides the basis for infinite possibilities of fabric coordination, also using the Babà trimmings collection.

BOGARDINE



003 - perla



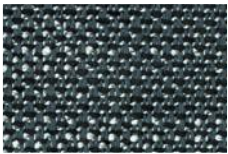
001 - quasinero



002 - taupe



003 - perla



008 - ottanio



009 - bianco

Category
Jacquard

Composition
31%CV 26%CO 24%PAN 10%LI 8%WO 1%PA
Weight: g/ml 960
Width: cm 140 – 55.12 inches
Curtain, Upholstery For Medium/Hard Use
Cfa: Yes
Martindale: 40.000

Washing Instructions

Yarns of different types and thicknesses create a textural weave and confer a slight matelassé effect to the surface. Soft and consistent to the hand, hardwearing and ideal for heavy duty seating.

SINEQUANON



Category
Linen and Viscose fabric

Composition
60%CV 16%LI 13%CO 6%PES 5%PAN
Weight: g/ml 663
Width: cm 140 – 55.12 inches
Cfa: Yes
Martindale: 35.000

Washing Instructions
[Icons: No iron, No dry clean, No tumble dry, No bleach, No steam, No wring]

01 - argento



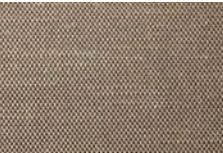
01 - argento



02 - taupe



05 - stone



25 - cappuccino



07 - perla



37 - caffè arabica

Panama weave with slightly shot yarns. Even here the Dedar offer extends with the linen and viscose cloth, which is durable, bright, boasts a rich texture (Flair, Fifty Fifty, Chambray, Aut Aut, Arbus). A special, careful blend of linen and viscose and a new construction which enables a reduction of the textile weight whilst guaranteeing the aesthetic quality, usage and durability, and also offering good value. This textile, just like the others in this range, feature a waterrepellent treatment which offers specific protection from liquids and oils.

CLAY

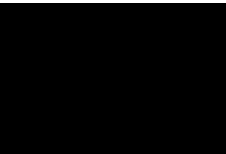


Category
Upholstery

Composition
76% Linen, 21% Cotton, 3% Polyester
Pattern: Solid
Weight: 770 g/lin.m
Width: 140 cm
Durability: 45.000 Martindale
Pilling: 4
Lightfastness: 5

Washing Instructions
[Icons: No iron, No dry clean, No tumble dry, No bleach, No steam, No wring]

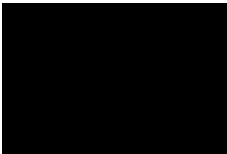
0010



002



004



005



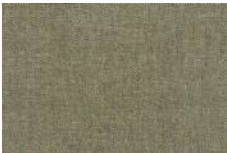
009



0010



0013



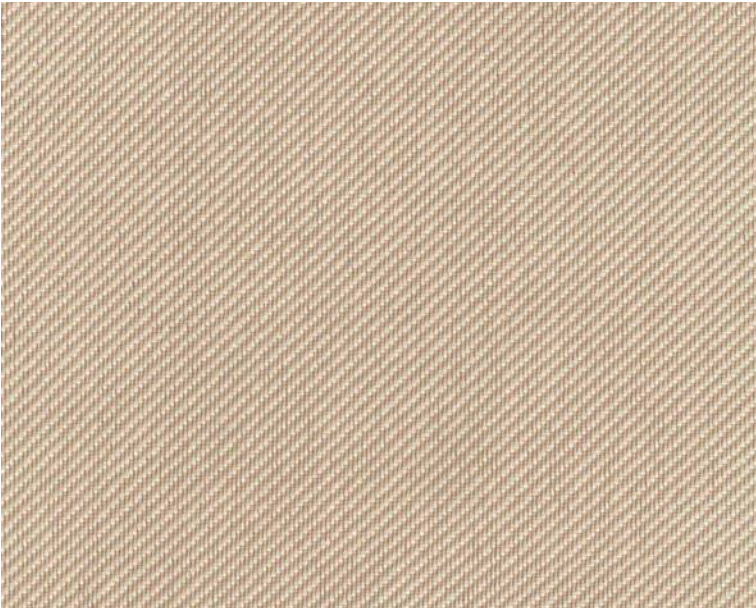
0015

Bringing together both natural beauty and a sense of finesse, the creative team have mixed colours of yarn in warp and weft to create an elegant yet casual fabric. The result has a unique structured surface that adds and extra dimension to any interior design scheme. With a back cloth that gives extra stability, Clay is perfect for upholstering furniture.

The colours are inspired by the designer's love of both art and interiors and include cool shades of cement, blue, and salvia but also the natural shades of wood and clay.

TWILL

TWENTY

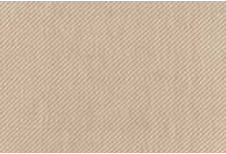


4 - cipria

Category
Twill

Composition
100%PI Flame Retardant
Width: 140 Cm
Weight: 630 Gr
Made in: Italy
Martindale: 80000
Pilling: 4/5 (Scale 1-5)
Colour Fastness To Light: 7 (Scale 1-8)
Colour Fastness To Crocking: 4/5 Dry 4/5 Wet (Scale 1-5)
Colour Fastness To Chlorinated Water: 4/5 (Scale 1-5)
Colour Fastness To Sea Water: 4/5 (Scale 1-5)
Tensile Strength: Class A (En 14465)
Tear Strength: Class A (En 14465)
Seam Slippage: Class A (En 14465)
Other Certifications: Yarns Certified Oeko-Tex
Fire Certifications: France M1 Nfp902-503-504-505,
Germany B1 Din 4102-1, Imo 8 Upholstery, Italia Classe
1 Tendaggi, Uk Cigarette Source 0, Uk Contract Curtains
Bs5867, Uk Contract Upholstery Bs7176, U.s.a. Cal Tb117

Washing Instructions



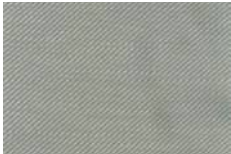
4 - cipria



20 - ruggine



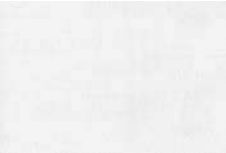
7 - nero



6 - grigio



3 - corda



1 - bianco



9 - pesco



12 - pervinca



17 - blue



19 - bordeaux



13 - acqua



16 - teal blue

A classic twill. A particularly thick thread/yarn highlights the “Z” diagonal motif which makes the fabric more dynamic. The shiny and matt threads enhance the effect of the light on the surface.

SAFIRE



003

Category
Boucle and chenille

Composition
43% Viscose, 17% Acrylic, 15% New wool, 9% Cotton, 8% Linen, 8% Polyester
Weight: 1010 g/lin.m
Width: 140 cm
Durability: 44 000 Martindale
Pilling: 3
Lightfastness: 6
Sustainability: Greenguard Certification

Washing Instructions



003



004



005



008



010

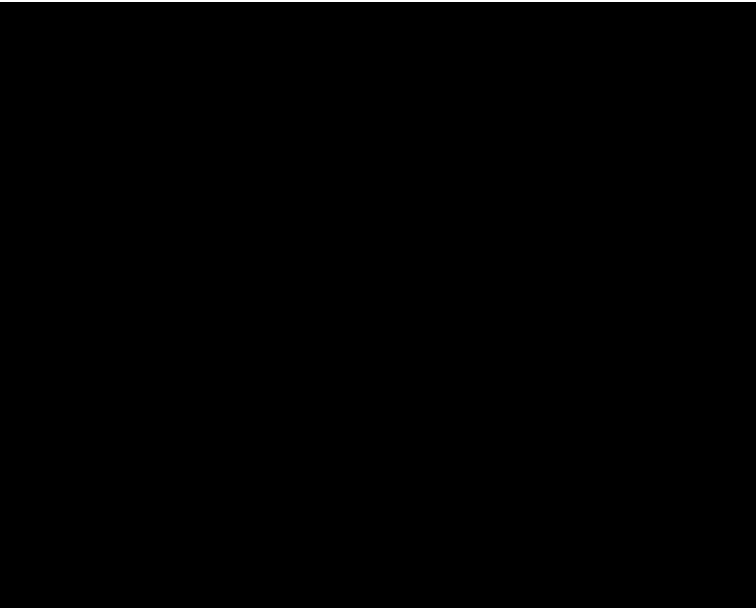


015



017

CORD



CA1419/053

Category
Cotton Velvet

Composition
100% cotton, groundmaterial: 100% cotton
Width: 140 cm
Durability: 100 000 Martindale

Washing Instructions



CA1419/053



CA1419/084



CA1419/070



CA1419/071



CA1419/091



CA1419/020



CA1419/032



CA1419/064



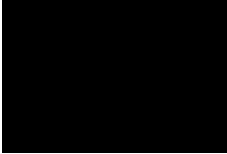
CA1419/051



CA1419/037



CA1419/093



CA1419/081

BONSAI



020

Category
Upholstery

Composition
48% PAN 29% CO 23% PES
Weight: 140 cm
Width: 905 per linear meter/g
Width: 646 per square meter/g
Durability: 50 000 Martindale
Seam slippage: <6mm
Pilling (DIN EN ISO 12945-2)
Rub fastness: Dry 4-5 Wet 4-5
Lightfastness: for medium colours 5

Flame retardant
BS 5852: Part 1: 1979
Ignition source 0 (Cigarette)

Fabric
Wave Dobby

Washing Instructions



020



021



093



072



041



032



082



051



050



070

TIVANO



3611 - corda



3611 - corda



3606 - tobacco



3603 - militare



3612 - fumo

Category
European cattle

Composition
Raw material: European cattle
Tanning: Mineral
Protection: Semianiline
Description: Waxed hand buffed
Thickness: 1,2 - 1,4 mm
Average size: 5,0 m²

Dry finishing locking	EN ISO 11644	≥ n.a. N/cm
Tear resistance	EN ISO 3377-1	≥ 20 N/cm
Flexing endurance	EN ISO 5402	≥ 20.000 runs
Dry rub colour fastness	EN ISO 11640	
	150 runs	≥ 4 grey scale
Wet rub colour fastness	EN ISO 11640	
	25 runs	≥ 4 grey scale
Light fastness	EN ISO 105-B	≥ 4 blue scale
Heat colour fastness	EN ISO 17228	≥ 4 grey scale

Avoid exposure to direct sunlight and heat sources
Clean frequently and gently with a soft cloth
Remove stains with a damp cloth or with a specific cleaning product

CUOIO LEATHER

Only for Frame sofa and armchair



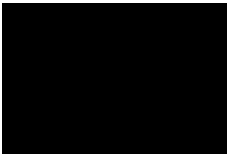
naturale



avorio



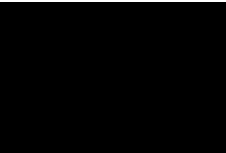
bianco



grigio



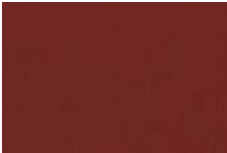
naturale



nero



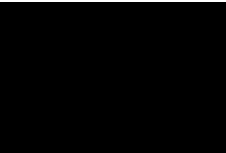
nocciola



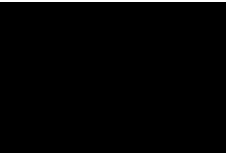
rosso bulgaro



sabbia



tabacco



testa di moro



tortora



verde fango

Composition
Bovine of European origin in Nabuk finishing, natural grain.
Average thickness 1.8/2.0 mm. Chrome tannage. Aniline dyed with pigmented finish
The possible presence of any imperfections testify the authenticity and the natural look of pure cuoio leather.

KAIROS COLLECTION



Category
Nabuck leather

Composition
Bovine of European origin in Nabuk finishing, natural grain.
The average size of each skin is around 5.0 sqm. Chrome tannage.
Aniline dyed, finished with high quality oils. Suede look, soft and velvet touch.
The possible presence of any imperfections testify the authenticity and the natural look of pure aniline leather.
Average thickness 1,2 - 1,4 mm.

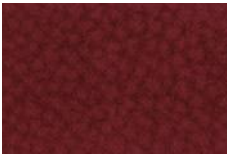
1716 - doeskin



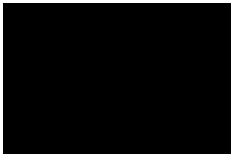
1719 - kangaroo



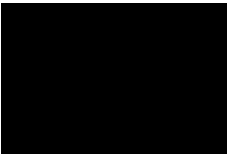
1716 - doeskin



1714 - lucky



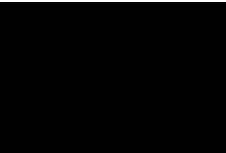
1704 - chocolate forest



1701 - caqui



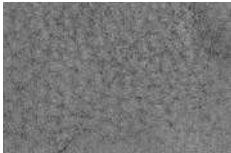
1711 - cenere



1721 - ematite



1715 - elephant



1710 - plomo



1718 - nude

LINEA COLLECTION



Category
High quality bovine leather with lightly buffed natural grain

Composition
Bovine of European origin, lightly buffed natural grain, finished thickness 0.9 – 1.1 mm.
The average size of each hide is around 4.8 – 5.0 sqm. Chrome tannage.
Through dyed; finishing with resins and pigments. Article with a pigmented and protective coat, with a soft, waxy feel and semi-matt appearance.

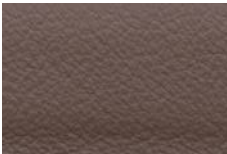
647 - grigio perla



629 - stone



647 - grigio perla



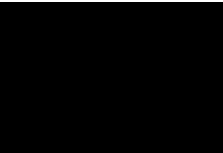
677 - malt



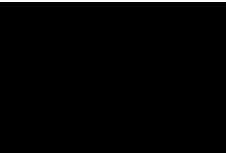
660 - asfalto



675 - new grey



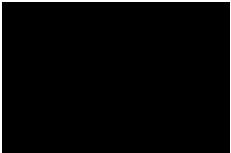
612 - castagna



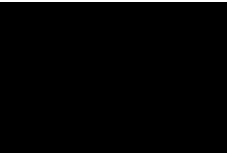
611 - testa moro



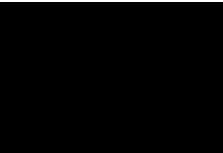
656 - cotto



610 - mogano



632 - verdone



622 - nero



619 - giallino



634 - gesso



674 - octane

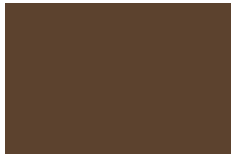
AIDA COLLECTION



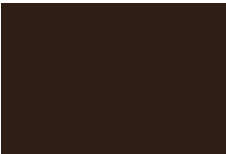
Daino

Category
Nappa Smooth leather

Composition
Average size 4.5-4.8 sqm, thickness 0.9-1.1 mm.
Chrome tannage.
Bovine leather with smooth aspect, aniline finished with some oils and waxes, produced on European bull.
Aniline dyed, finished with high quality oils. Soft article with a slight two tones effect, emotional touch.
The possible presence of any imperfections and color variations are typical for this type of leather as they testify the authenticity and the natural look of pure aniline leather.



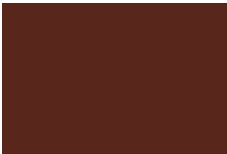
Daino



Coffee



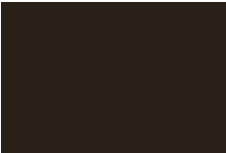
Tan



Saddle



Blackberry



Spruce



Nocturne



Mud



Grey



Sand

TECHNICAL SPECIFICATONS & GENERAL INDEX

LEISURE

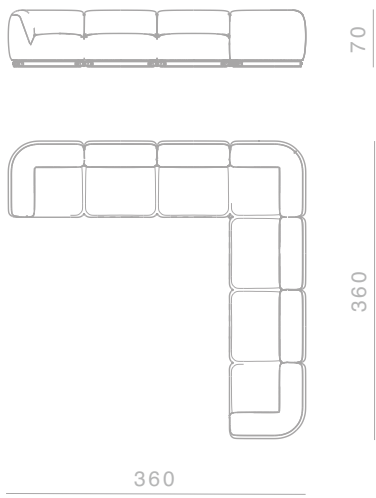
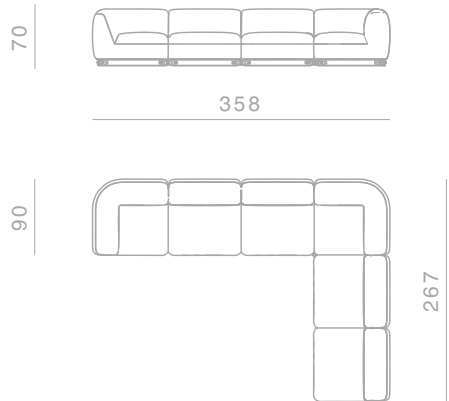
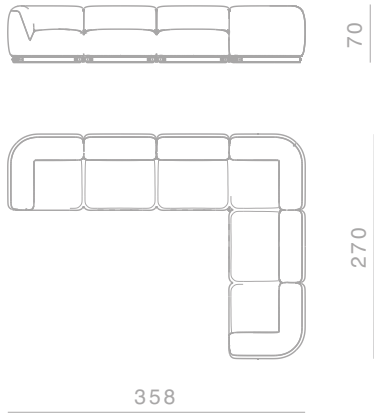
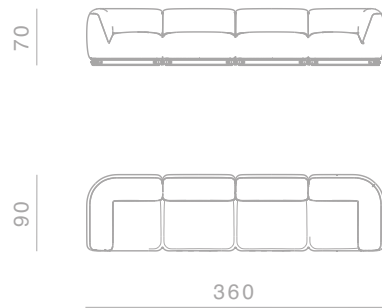
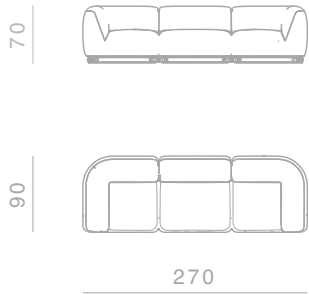
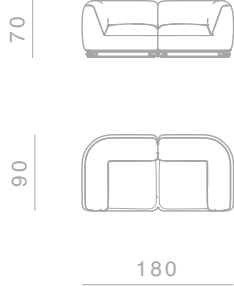
Seating System

Structure
Back and seat cushions in polyurethane rubber by mould of different densities with internal metal support

Cushions
Rubber by mould of different densities with a quilted goose down in cotton light

Covers
Covers are not removable

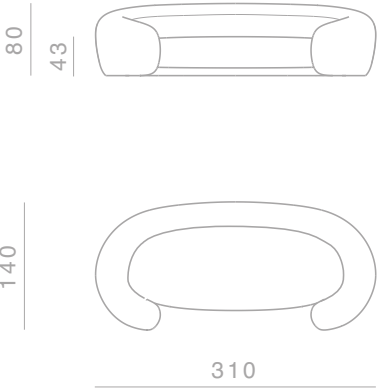
Base
Hooking system in brass die casted in-house in Ghidini1961 and natural leather



BRIDGE

Seating System

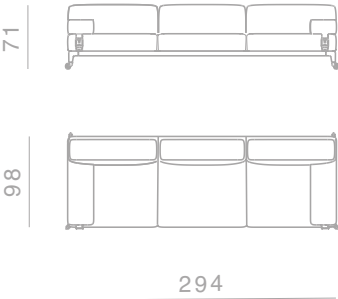
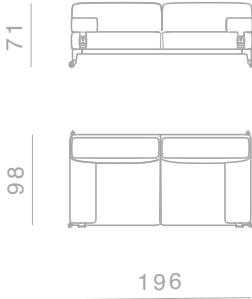
- Structure**
Polyurethane rubber by mould of different densities with internal metal support.
- Cushions**
Back cushions in polyurethane rubber by mould of different densities.
Seat cushions in polyurethane rubber of different densities.
- Covers**
Covers are not removable



SHAKER

Seating System

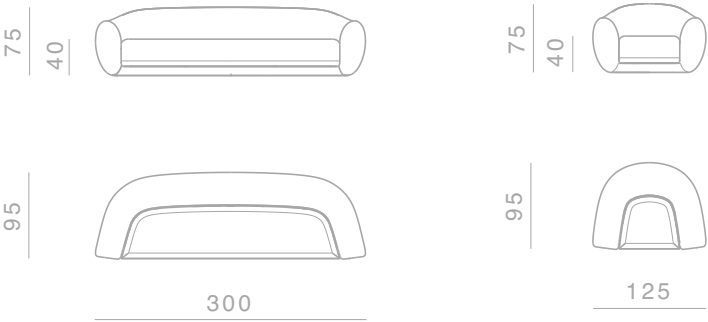
- Structure**
Base in painted and strapped metal.
Backrest in rubber in different densities.
- Cushions**
Back and seat cushions in polyurethane rubber of different densities. Lateral cushions are blocked with natural leather belt with brass buckle.
- Base**
Shaker sofa is based on aluminum structure die casted in-house at Ghidini1961.



ELEPHANT

Seating System

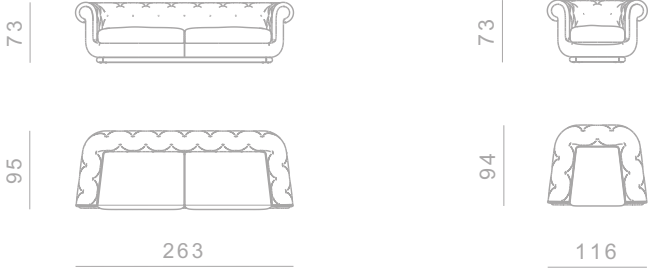
- Structure**
Polyurethane rubber by mould of different densities with internal metal support.
- Cushions**
Back cushions in polyurethane rubber by mould of different densities.
Seat cushions in polyurethane rubber of different densities.
- Covers**
Covers are not removable



OPERA

Seating System

- Structure**
Base in plywood panel and polyurethane rubber of different densities
- Cushions**
Perimetral cushions in high grammage on wood structure.
Seat cushions in polyurethane rubber of different densities.
Back cushions covered with a quilted goose down in cotton light
- Covers**
Seat and back cushions cover are removable for both fabric and leather versions
- Base**
The Opera sofa and armchair are based on aluminium structure composed by round profile and feet die casted in house at Ghidini1961



TARANTINO

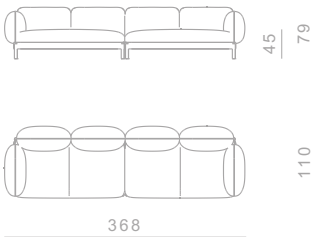
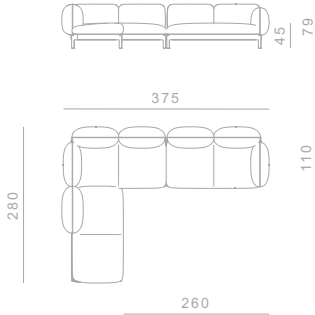
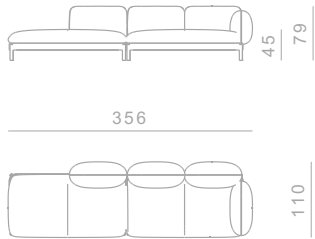
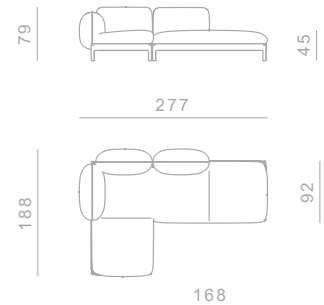
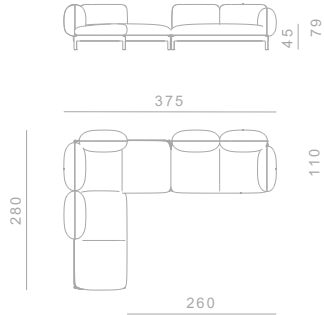
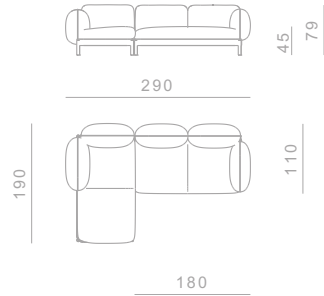
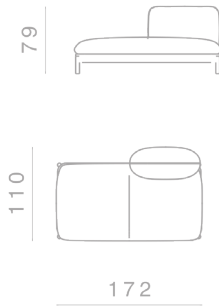
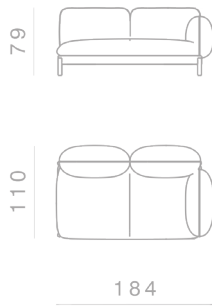
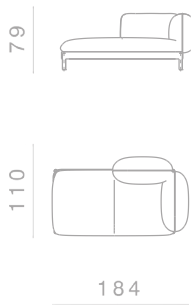
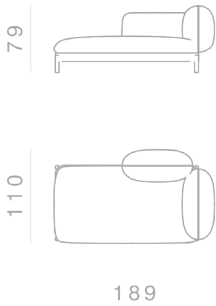
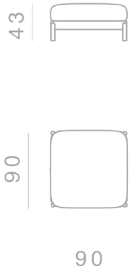
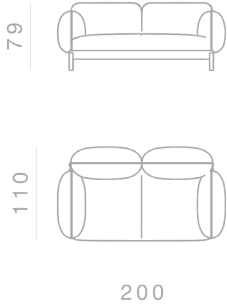
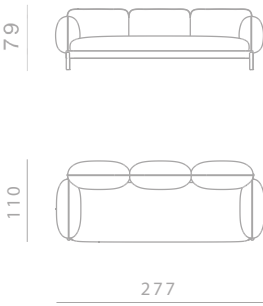
Seating System

Structure
Aluminum legs fixed on internal metal frame, aluminum side support

Cushions
Back cushions in high grammage wadding with internal rubber insert, covered with a quilted goose down in cotton lining. Seat cushions in polyurethane rubber of different densities covered with a quilted goose down in cotton lining

Covers
Covers are not removable

Base
The sofa, armchair and ottoman are made of Italian aluminum, bent in-house at Ghidini1961. Polished manually, and lacquered with a transparent finish to guarantee a long lasting durability



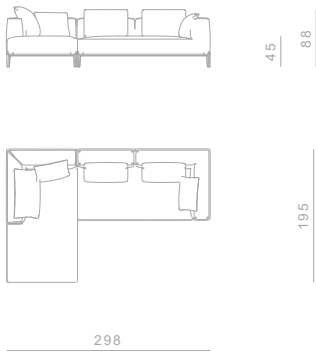
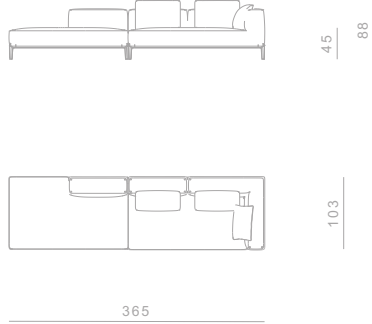
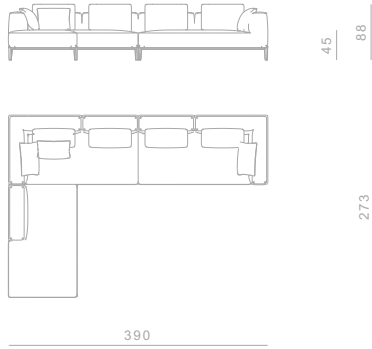
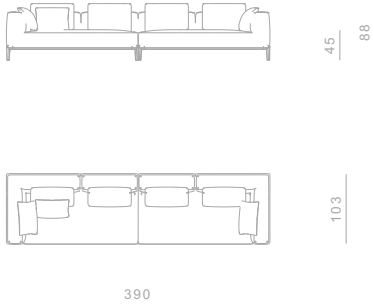
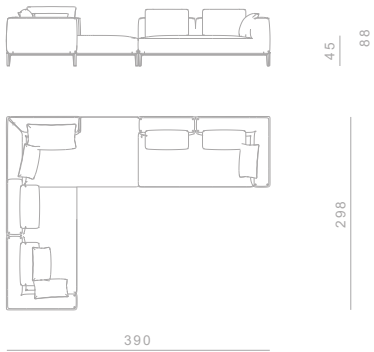
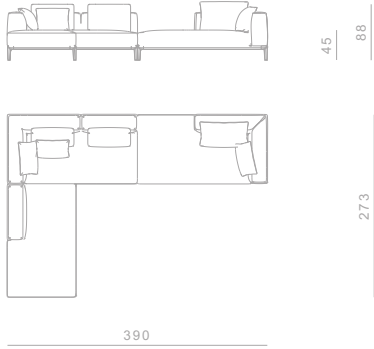
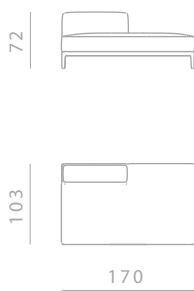
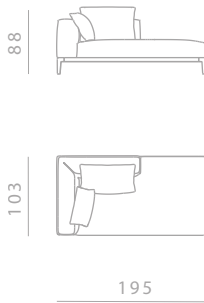
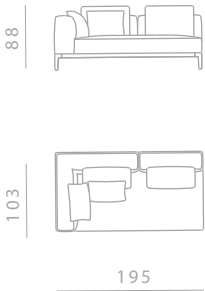
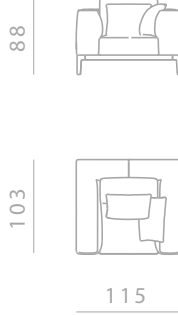
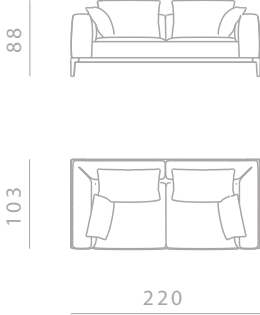
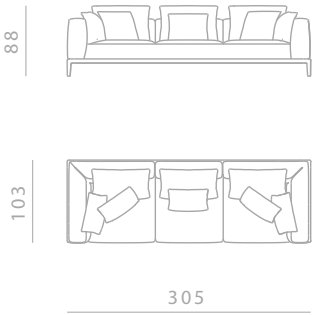
MILO
Seating System

Structure
Base in painted strapped metal and plywood panel

Cushions
Perimetral cushions in high grammage on wood structure. Seat cushions in polyurethane rubber of different densities. Back and lateral cushions covered with a quilted goose down in cotton light

Covers
Seat and back cushions cover are removable

Base
All products from Milo family are based on aluminium structure with die casted legs in-house Ghidini1961



FRAME

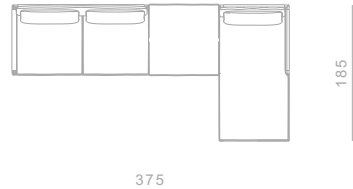
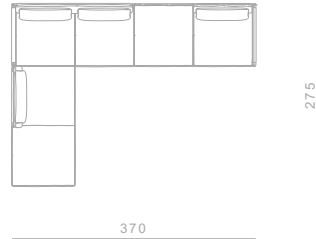
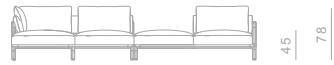
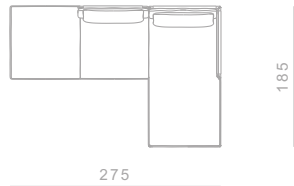
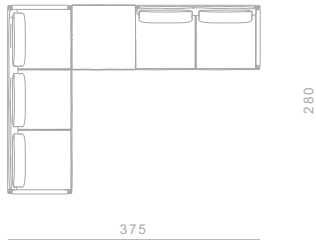
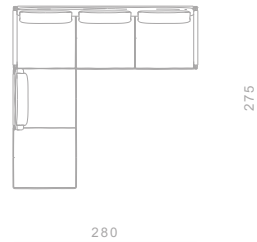
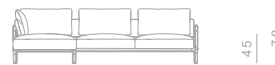
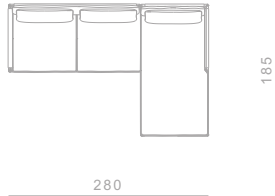
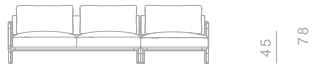
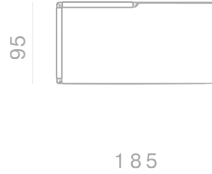
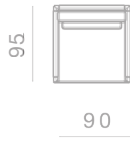
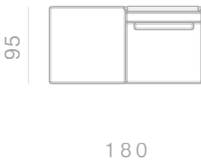
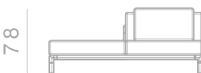
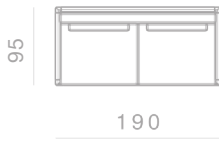
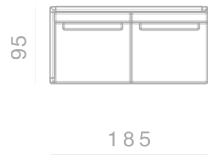
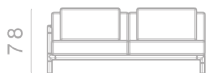
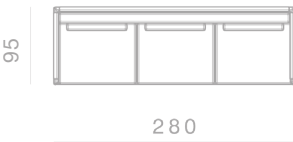
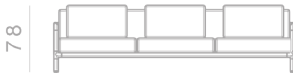
Seating System

Structure
Base in painted and strapped metal. Backrest in rubber in different densities with plywood panel

Cushions
Back cushions in high grammage wadding with internal rubber insert.
Seat cushions in polyurethane rubber of different densities. Side and back sides in natural cuoio leather

Covers
All covers are completely removable for both fabric and leather versions

Base
The sofa and armchair is based on the Frame family of castings. The frame castings are made of Italian alluminium, die casted in-house at Ghidini1961.



BOLD

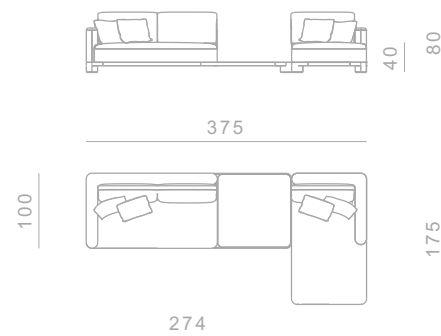
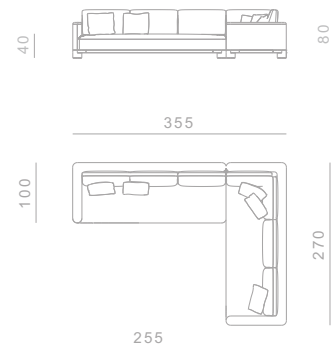
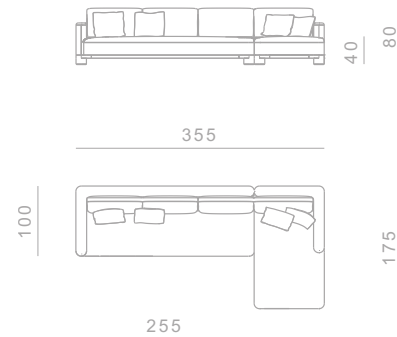
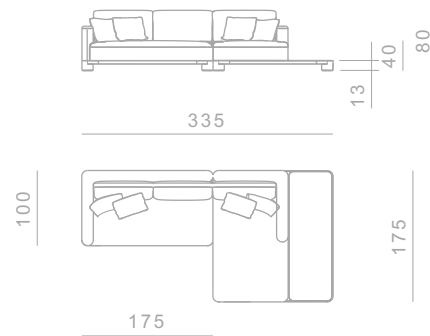
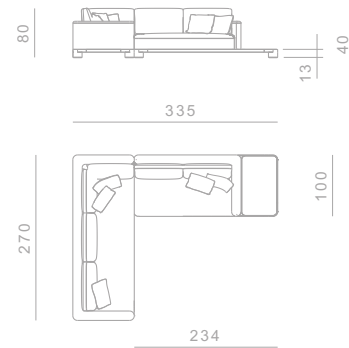
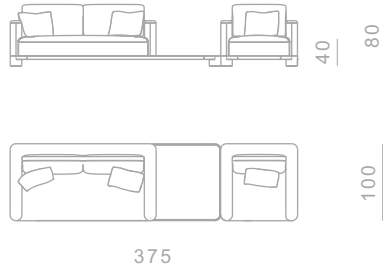
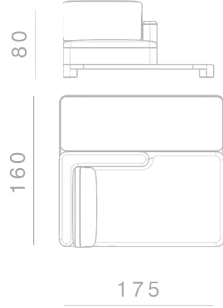
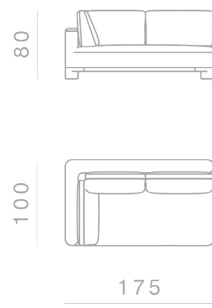
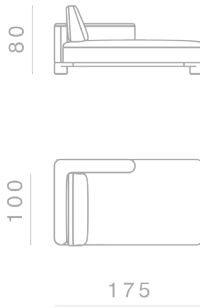
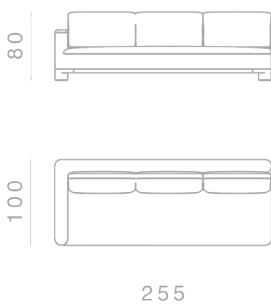
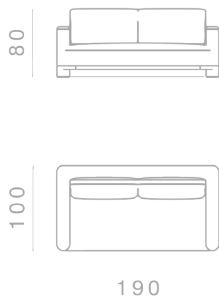
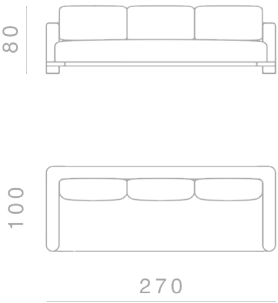
Seating System

Structure
Die casted aluminum on the angular elements and extruded aluminum for the supporting structure on the perimeter. Internal structure in wood with metal supporting frame

Cushions
Back cushions in high grammage wadding with internal rubber insert. Seat cushions in polyurethane rubber of different densities

Covers
Back covers are completely removable for both fabric and leather versions

Base
The sofa, armchair and ottoman are based on the Bold family of castings. The Bold castings are made of Italian aluminum, die casted in-house at Ghidini1961. Polished manually, and lacquered with a transparent finish to guarantee a long lasting durability



ABBRACCI

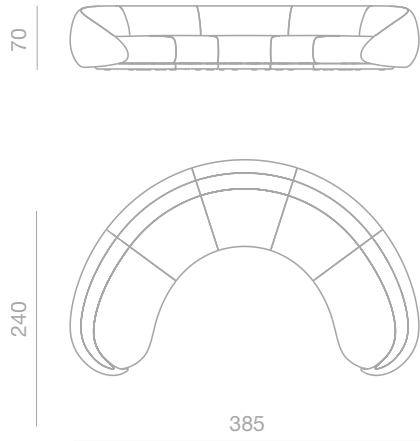
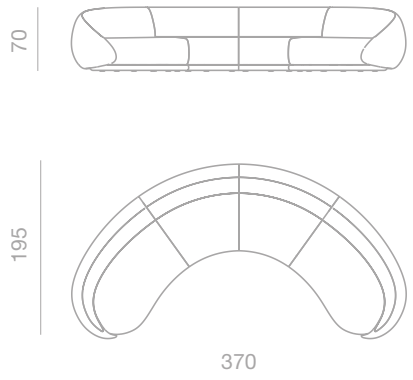
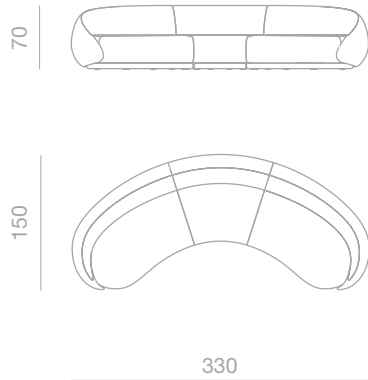
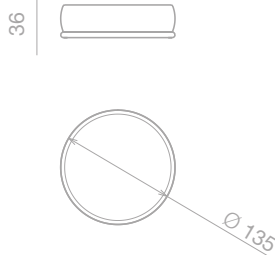
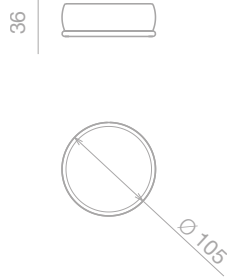
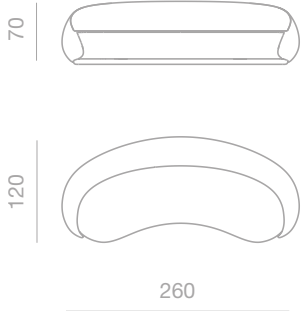
Seating System

Structure
Base structure in brass plated aluminum bended round tube. Internal structure with metal supporting frame

Cushions
Back cushions in high grammage wadding with internal rubber insert.
Seat cushions in polyurethane rubber of different densities

Covers
Covers are not removable

Base
The sofa, armchair and ottoman are made of Italian aluminum, bent in-house at Ghidini1961. Polished manually, and lacquered with a transparent finish to guarantee a long lasting durability



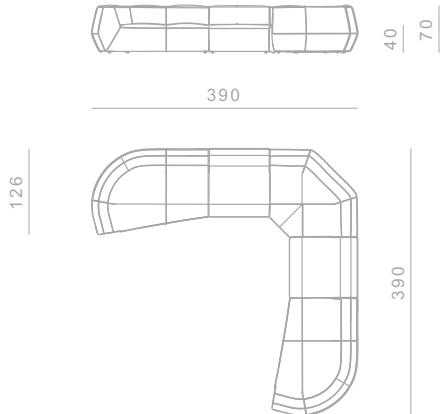
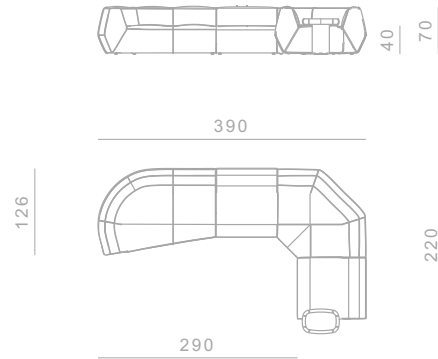
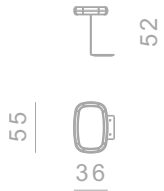
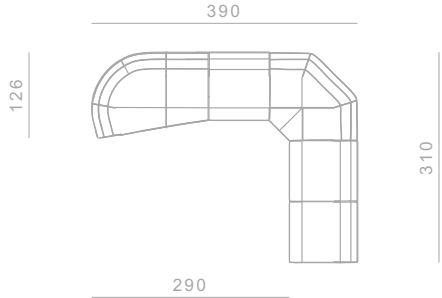
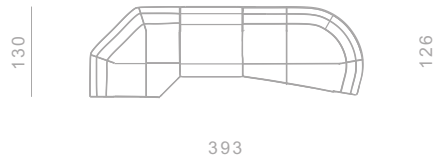
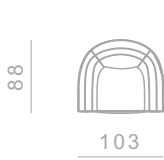
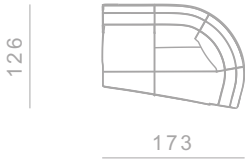
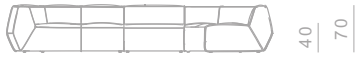
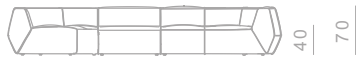
INFINITO

Seating System

Structure
Base in plywood panel and
polyurethane rubber of different
densities

Cushions
Perimetral cushions in high
grammage on wood structure.
Seat cushions in polyurethane
rubber of different densities.
Seat cushions covered with a
quilted goose down in cotton light

Covers
All products from Infinito family
are covered by leather and are
not removable



DODO

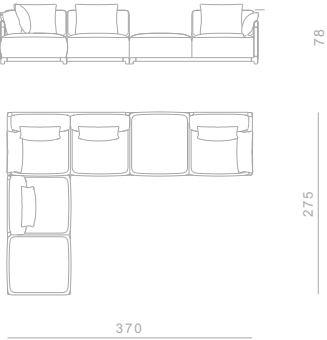
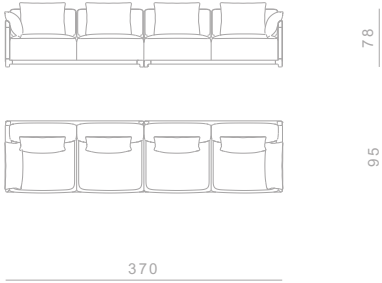
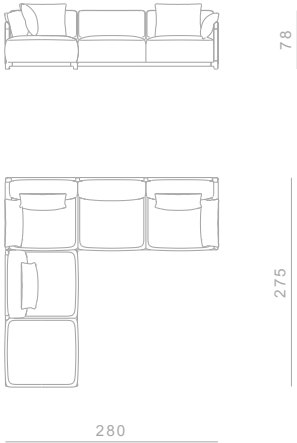
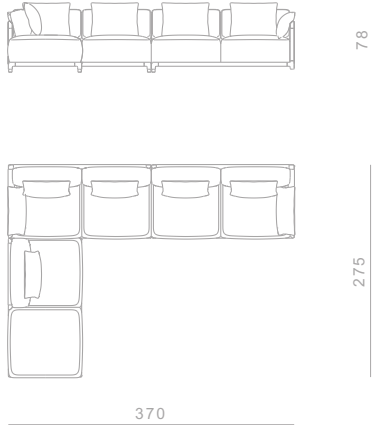
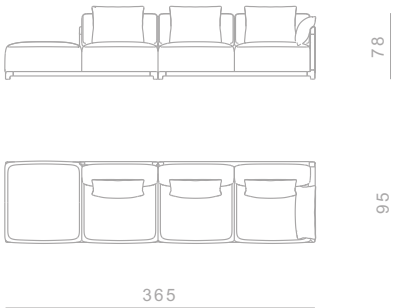
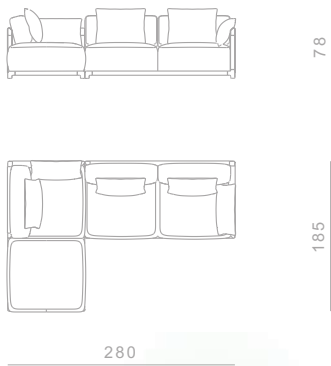
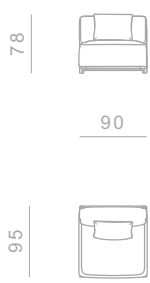
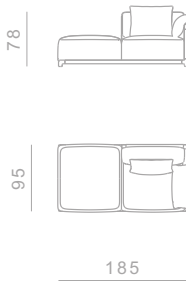
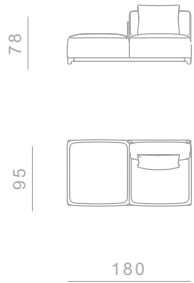
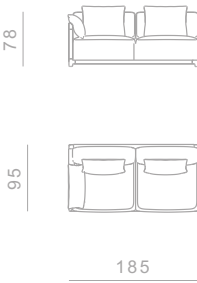
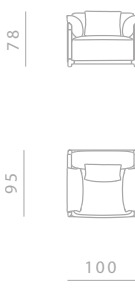
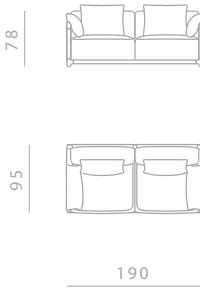
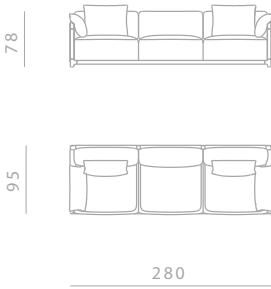
Seating System

Structure
Base in painted strapped metal and plywood panel

Cushions
Back cushions in high grammage wadding internal rubber insert. Seat cushions in polyurethane rubber of different densities. Side and back sides in natural cuoio leather covered. Back and lateral cushions covered with a quilted goose down in cotton light

Covers
Seat and back cushions cover are removable

Base
The sofa and armchair is based on the Dodo family of castings. The castings are made on Italian aluminium, die casted in house Ghidini1961



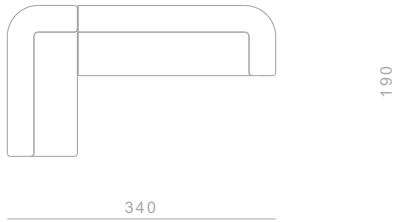
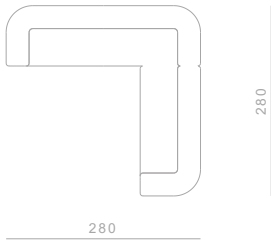
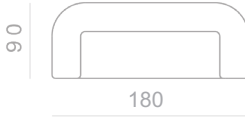
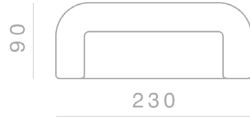
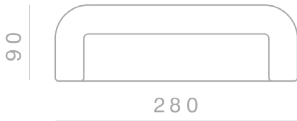
KATANA

Seating System

Structure
Belted seat and multilayered, covered in polyurethane foam at different densities covered with quilted goose down in cotton lining.
Backrest structure made of plywood covered with polyurethane rubber of different densities, all covered with a quilted goose down in cotton lining

Covers
The sofa covers are not removable

Base
The sofa and armchair is based on the Katana leg.
The Katana leg is made of Italian brass, die casted in-house at Ghidini1961. Polished manually, and lacquered with transparent finish to guarantee a longlasting durability



PORTOFINO

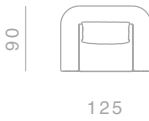
Seating System

Structure
Base in plywood panel and polyurethane rubber of different densities

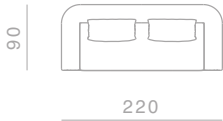
Cushions
Perimetral cushions in high grammage on wood structure. Seat cushions in polyurethane rubber of different densities. Back cushions covered with a quilted goose down in cotton light

Covers
Seat and back cushions cover are removable for both fabric and leather versions

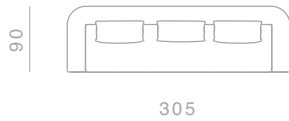
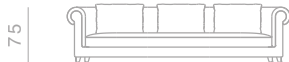
Base
All products from Portofino family are based on aluminium feet die casted in house at Ghidini1961



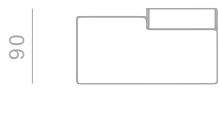
125



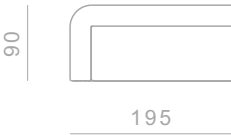
220



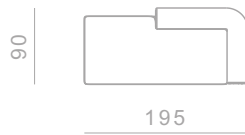
305



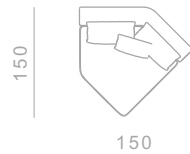
170



195



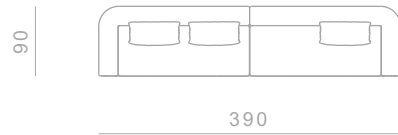
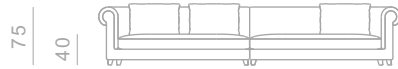
195



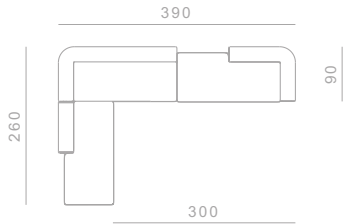
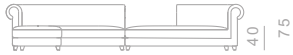
150



85

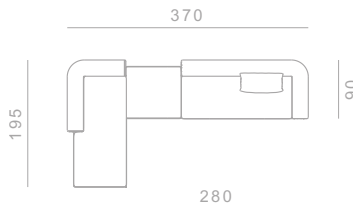


390



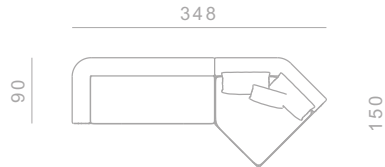
390

300



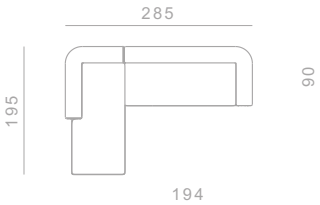
370

280



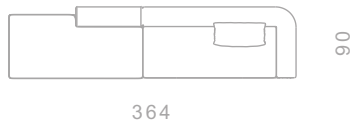
348

150



285

194



364

SWEET

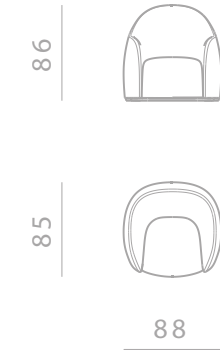
Seating System

Structure
Base in plywood panel and polyurethane rubber of different densities

Cushions
Cushions in polyurethane rubber by mould of different densities

Covers
Covers are not removable

Base
Sweet is based on aluminium ring cutted by water jet



SIPARIO

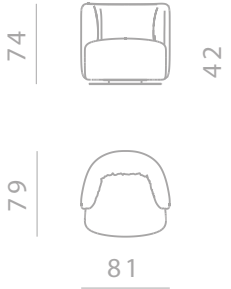
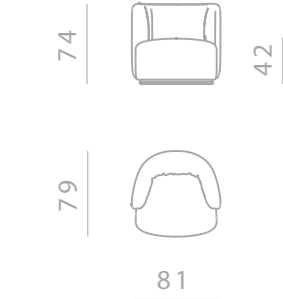
Seating System

Structure
Base in plywood panel and polyurethane rubber of different densities

Cushions
Cushions in polyurethane rubber by mould of different densities

Covers
Covers are not removable

Base
Sipario is based on aluminium ring cutted by water jet



BUCKET

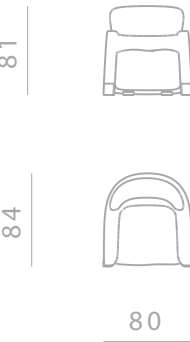
Seating System

Structure
Base in plywood panel and polyurethane rubber of different densities

Cushions
Seat cushion in polyurethane rubber covered with a quilted goose down in cotton light. Back cushion in polyurethane rubber by mould of different densities

Covers
Covers are not removable

Base
Bucket is based on aluminium feet die casted in house at Ghidini1961



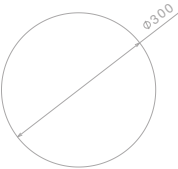
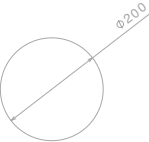
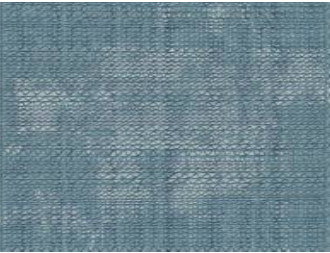
TRIPLE WAVES

Rugs

Material
New Zealand wool and Tencel

Technique
Hand tufted
The fleece can then be finished by hand to different thicknesses with the use of scissors.
The fleece can be held as a “velvet” or a “loop” (small bouclé).

At the end of the weaving process, natural latex is poured on the back of the carpet, which gives greater compactness to the structure of the carpet.
Finally, a cotton cloth is applied on the back as a finishing touch.



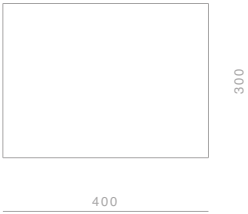
CONNECT

Rugs

Material
New Zealand wool and Tencel

Technique
Hand tufted
The fleece can then be finished by hand to different thicknesses with the use of scissors.
The fleece can be held as a “velvet” or a “loop” (small bouclé).

At the end of the weaving process, natural latex is poured on the back of the carpet, which gives greater compactness to the structure of the carpet.
Finally, a cotton cloth is applied on the back as a finishing touch.



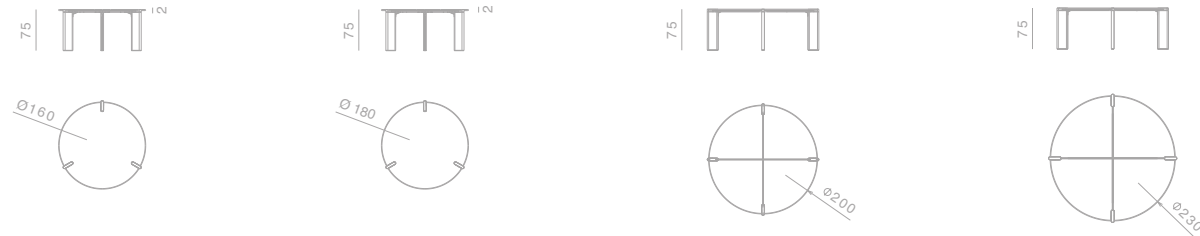
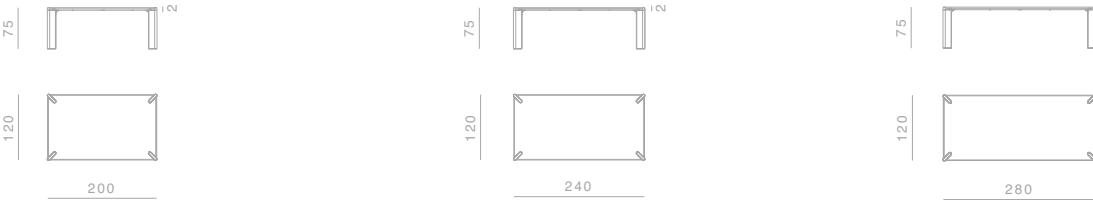
OTTANTA

Tables

Structure
Aluminum die casted elements on the top of each leg. Each element is die casted in house at Ghidini1961.

Top Finishes
20mm marble, 20mm wood

Legs
50mm marble, 50mm wood

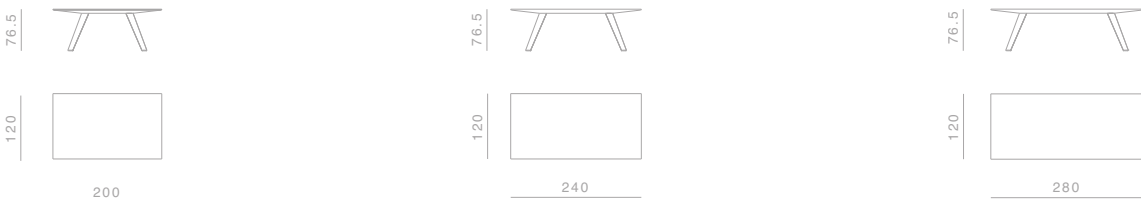


LOCUST

Tables

Top Finishes
75mm wood with slim edge profile

Legs
Solid wood

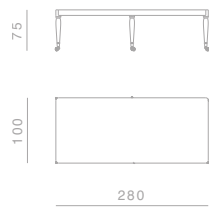
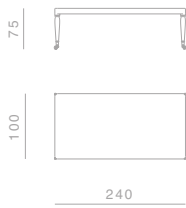
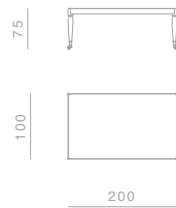


SHAKER

Tables

Top Finishes
100mm wood

Legs
Turned wood with terminal wheel in brass machined in-house at Ghidini1961.



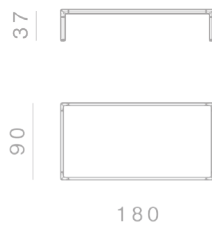
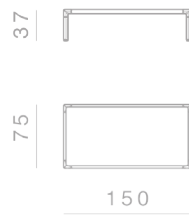
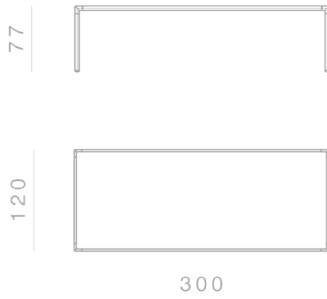
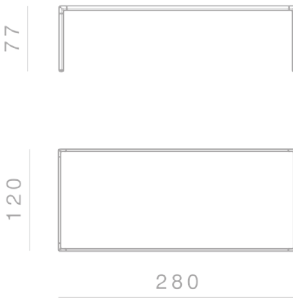
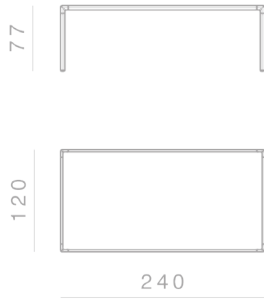
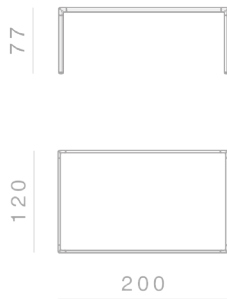
FRAME

Tables

Structure
Die casted aluminium on the angular elements and tubular aluminium for the supporting structure on the perimeter

DINING TABLES Top Finishes
20mm marble, 30mm wood

COFFEE TABLES Top Finishes
20mm marble, 20mm wood, 20mm cuoio leather



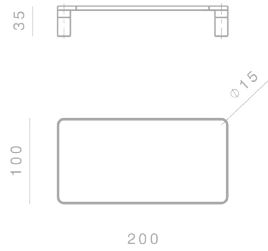
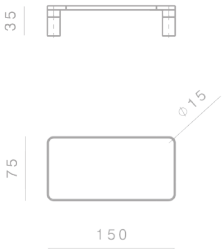
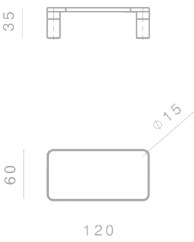
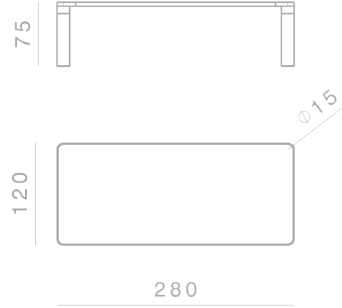
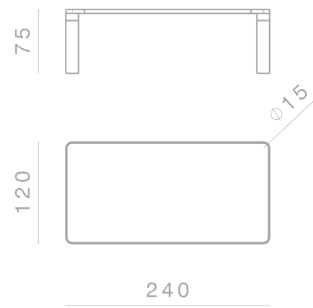
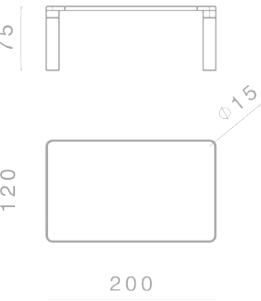
Custom finishes available upon request.

BOLD

Tables

Structure
Die casted aluminum on the angular elements and extruded aluminum for the supporting structure on the perimeter
Legs: marble, wood

Top Finishes
20mm marble, 20mm wood



Custom finishes available upon request.

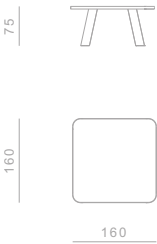
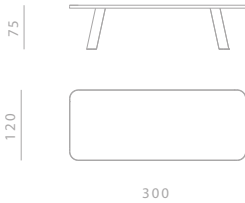
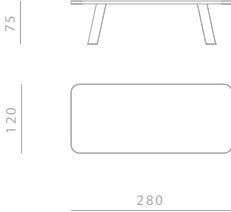
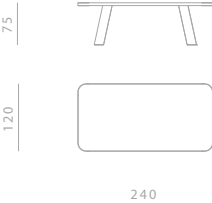
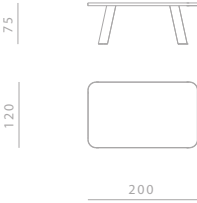
NATIVE

Tables

Structure
Supporting 30mm wood panel for the top and for fixing legs. Perimetral aluminium, curved for the round versions and extruded with die casted corners in house at Ghidini1961 for the rectangular versions

Top Finishes
20mm wood, 20mm marble (total thickness with the supporting panel 50mm)

Legs
Solid wood, marble



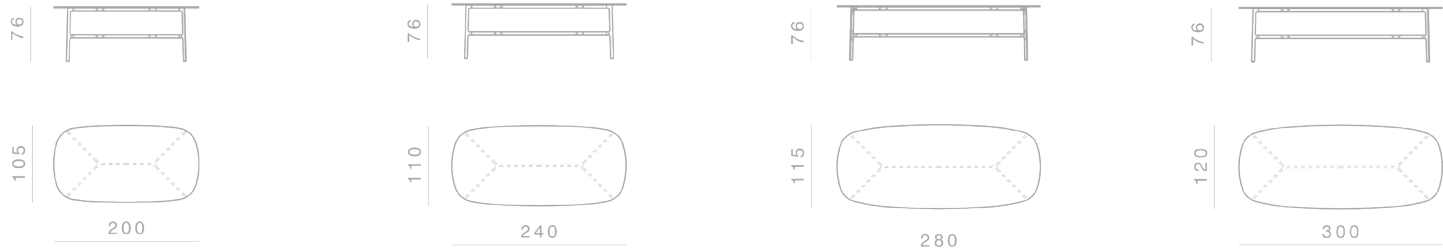
Custom finishes available upon request.

COAST

Tables

Structure
Die casted brass on the angular elements and tubular aluminium for the supporting structure

Top Finishes
20mm marble, 30mm wood



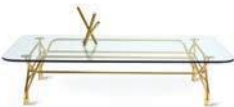
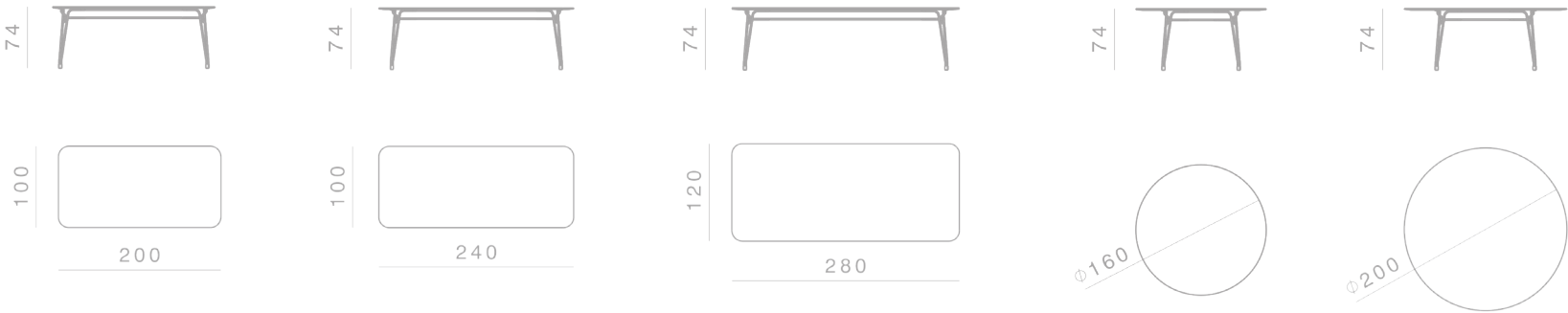
BOTANY

Tables

DINING TABLES:
Structure
Gilded metal rod with diameter 18mm supporting the structure, with 4 supporting elements for the table top. Satin gold finish

COFFEE TABLES:
Structure
Gilded metal rod with diameter 18mm supporting the structure, with 4 supporting elements for the table top. Satin gold finish

Top Finishes
12mm glass, 30mm wood



LEGS

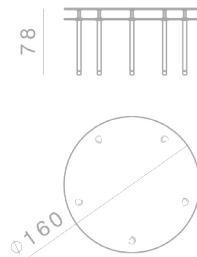
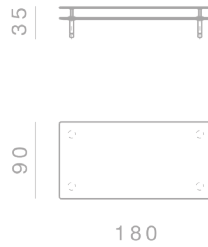
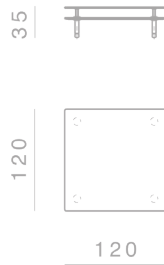
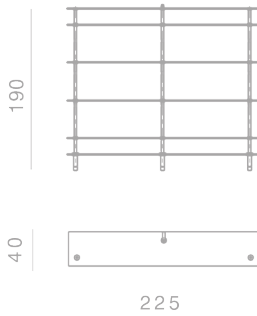
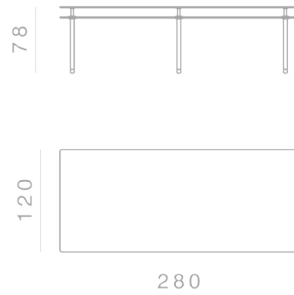
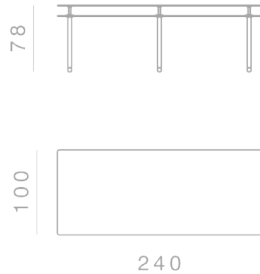
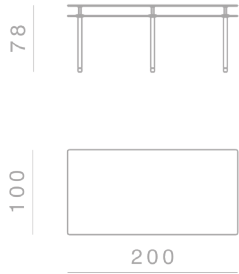
Modular System

DINING TABLES:
Structure
Solid brass legs lacquered
diameter 35mm

COFFEE TABLES:
Structure
Solid brass legs lacquered
diameter 45mm

Top Finishes
12mm glass, 20mm marble

Top Finishes
12mm glass, 30mm wood

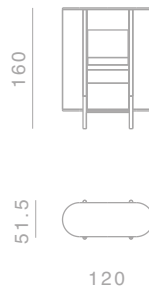
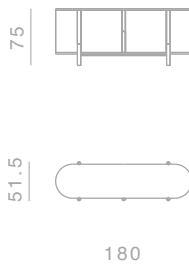
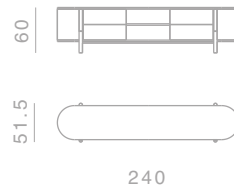


TARANTINO

Cabinets

Structure
Extruded aluminun for the
supporting structure and for the
handles. Wood veneered container.

Interior
Interior shelving and internal
bases covered in wood
Opening with internal push system.



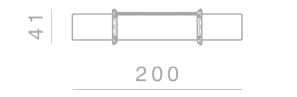
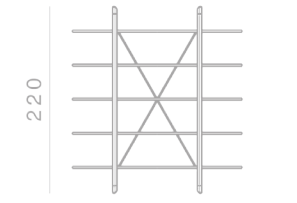
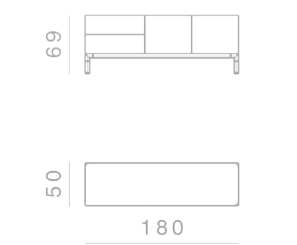
Custom finishes available upon request.

FRAME

Cabinets & Bookshelves

Structure
33x60mm oval tubular in aluminium with die-cast corners. Galvanic finish in polished brass, or satin brass and painted burnished brass. Dark Tulip Wood veneered melamine container, matte acrylic polish

Interior:
interior shelving and internal bases covered in natural leather. Opening with internal push system

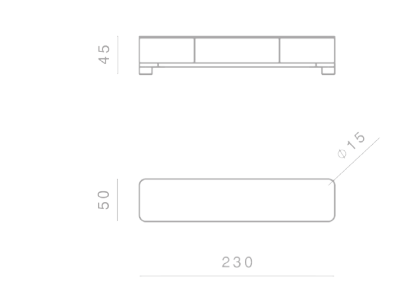
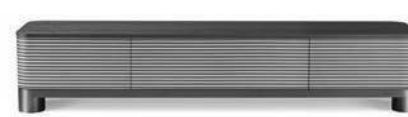
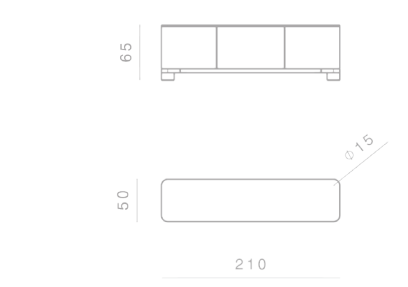


BOLD

Cabinets

Structure
Die casted aluminum on the angular elements and extruded aluminum for the supporting structure on the perimeter. Wood veneered container

Interior
Interior shelving and internal bases covered in wood. Opening with internal push system



Custom finishes available upon request.

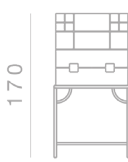
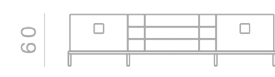
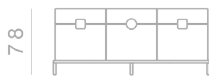
ZUAN

Cabinets

Structure
30x30mm squared tubular in satin brass and lacquered Mahogany feather veneered melamine container, matte

polished with filling bottom
Visible shelving in satin brass.
Top in Green Alps marble.
Handles in satin brass

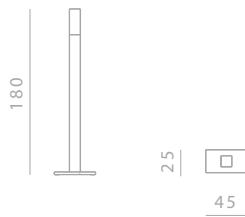
Interior
interior shelving and internal bases covered in natural leather



GIOTTO

Sculptural Light

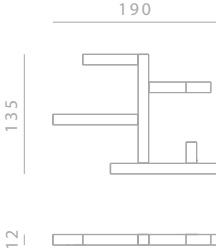
Floor lamp in gold plated stainless steel and plexiglass terminal.



INCROCIO

Shelving

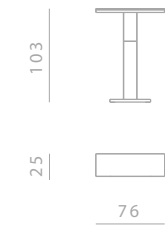
Shelves in gold plated stainless steel and plexiglass. Hanging frame on to support photos, small pots, small books, knick-knacks.



PORTO

Console

Console in gold plated stainless steel and handmade finish on the upper part. Top featuring a light source to light up vases, books, sculptures.



Katana Armchair
design Paolo Rizzatto
Armchair



Katana Bench
design Paolo Rizzatto
Bench



Bold Chair
design Elisa Giovannoni
Chair



Coast Chair
design Branch Creative
Chair



Leporello Jr.
design Paolo Rizzatto
Stool



Love Chair
design Nika Zupanc
Chair



Miami Chair
design Nika Zupanc
Chair



Miami Table
design Nika Zupanc
Desk



Can Can
design Johanna Grawunder
Table Lamp



Can Can
design Johanna Grawunder
Floor Lamp



Can Can
design Johanna Grawunder
Suspension Lamp



Can Can
design Johanna Grawunder
Suspension Lamp



Jackfruit Lamp
design Campana Brothers
Table Lamp



Jackfruit Lamp
design Campana Brothers
Table Lamp



Jackfruit Lamp
design Campana Brothers
Table Lamp



Flamingo Lamp
design Nika Zupanc
Reading Lamp



Factory Lamp
design Elisa Giovannoni
Suspension Lamp ø450



Factory Lamp
design Elisa Giovannoni
Suspension Lamp ø630



Factory Lamp
design Elisa Giovannoni
Suspension Lamp ø780



Sfere Double
design Paolo Rizzatto
Suspension Lamp



Flamingo Lamp
design Nika Zupanc
Table Lamp



Mio
design Aldo Cibic
Table Lamp



Bio
design Aldo Cibic
Table Lamp



Trio
design Aldo Cibic
Table Lamp



Factory Lamp
design Elisa Giovannoni
Suspension Lamp ø450



Factory Lamp
design Elisa Giovannoni
Suspension Lamp ø630



Factory Lamp
design Elisa Giovannoni
Suspension Lamp ø780



Sfere Single
design Paolo Rizzatto
Suspension Lamp



Dusk Dawn
design Branch Creative
Suspension Lamp



Dusk Dawn
design Branch Creative
Table Lamp



Dusk Dawn
design Branch Creative
Reading Lamp



Dusk Dawn
design Branch Creative
Floor Lamp



Indipendant Cylinder
design Richard Hutten
Suspension Lamp



Indipendant Cone
design Richard Hutten
Suspension Lamp



Indipendant Round
design Richard Hutten
Suspension Lamp



Frying Pan Mirror
design Studio Job
Mirror



Bullet Lamp
design Studio Job
Table Lamp



Bullet Lamp
design Studio Job
Table Lamp



One on One
design Branch Creative
Table Lamp



One on One
design Branch Creative
Table Lamp



Indipendant Cylinder
design Richard Hutten
Suspension Lamp



Indipendant Cone
design Richard Hutten
Suspension Lamp



Indipendant Round
design Richard Hutten
Suspension Lamp



Frying Pan Mirror
design Studio Job
Mirror



Gioiello Round Mirror
design Nika Zupanc
Mirror



Gioiello Rectangular Mirror
design Nika Zupanc
Mirror



Gioiello Free Standing Mirror
design Nika Zupanc
Mirror



Gioiello Trapezoid Mirror
design Nika Zupanc
Mirror



Fan
design Setsu & Shinobu Ito
Mirror



Da Vinci Table
design Richard Hutten
Coffee tables



Da Vinci Table
design Richard Hutten
Coffee tables



Ninfee
design Alessandro Mendini
Coffee tables



Gioiello Drop Mirror
design Nika Zupanc
Mirror



Gioiello Oval Mirror
design Nika Zupanc
Mirror



Gioiello Octagonal Mirror
design Nika Zupanc
Mirror



Opera Rectangular Tables
design Richard Hutten
Tables



Opera Round Tables
design Richard Hutten
Tables Ø28



Opera Round Tables
design Richard Hutten
Tables Ø35



Opera Squared Tables
design Richard Hutten
Tables



Kaleidos Large
design Campana Brothers
Mirror



Kaleidos Small
design Campana Brothers
Mirror



Portrait With Birdie
design Elisa Giovannoni
Mirror



Portrait With Little Vase
design Elisa Giovannoni
Mirror



Flowers
design Stefano Giovannoni
Coffee tables



Flowers
design Stefano Giovannoni
Coffee tables



Flowers
design Stefano Giovannoni
Coffee tables



Sunset Mirror Small
design Nika Zupanc
Mirror



Sunset Mirror Small
design Nika Zupanc
Mirror



Sunset Mirror Large
design Nika Zupanc
Mirror



Sunset Mirror Large
design Nika Zupanc
Mirror



Butterfly
design Richard Hutten
Coatrack



Single Butterfly Hook
design Richard Hutten
Coatrack



Butterfly
design Richard Hutten
Coatrack



Single Butterfly Hook
design Richard Hutten
Coatrack



Butler Umbrella Stand
design Richard Hutten
Umbrella stand



Tumbrella Stand
design Richard Hutten
Umbrella stand



Sticks Flower Pot
design Campana Brothers
Flower pot



Sticks Candle Holder
design Campana Brothers
Candle holder



Here
design Studio Job
Ice bucket



Here
design Studio Job
Ice bucket



There (push pin)
design Studio Job
Candlestick



Nowhere (bullet)
design Studio Job
Vase



Jackfruit
design Campana Brothers
Sculpural Vase



Tornado
design Campana Brothers
Sculpural Vase



Jackfruit
design Campana Brothers
Sculpural Vase



Medium bowl
design Andrea Branzi
Bowls



Cylinder bowl
design Andrea Branzi
Bowls



Large bowl
design Andrea Branzi
Bowls



Gil&Luc
design Noè Duchaufour - Lawrance
Vase



Joe&Ema
design Noè Duchaufour - Lawrance
Vase



Ema&Lou
design Noè Duchaufour - Lawrance
Vase



Perished
design Studio Job
Bowls



Perished
design Studio Job
Bowls



Perished
design Studio Job
Bowls



Double O
design Richard Hutten
Ice bucket



Olala Etagere
design Richard Hutten
Etagere



Double O Tray
design Richard Hutten
Tray



Perished
design Studio Job
Napkin holder



Perished
design Studio Job
Tray



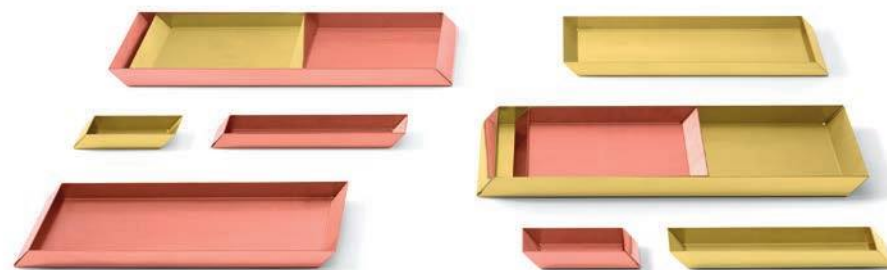
Tip Top
design Richard Hutten
Pencil holder, trays, bowls,
Paper basket



Axonometry
design Elisa Giovannoni
Trays



Axonometry
design Elisa Giovannoni
Trays



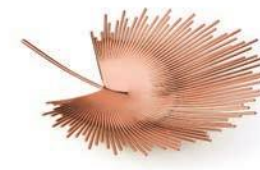
Axonometry
design Elisa Giovannoni
Trays



Knotted Cherry Small
design Nika Zupanc
Box



Knotted Cherry Medium
design Nika Zupanc
Box



Florida Bowl
design Nika Zupanc
Bowl



Florida Bowl
design Nika Zupanc
Bowl



Rabbit
design Stefano Giovannoni
Door stopper



Rabbit
design Stefano Giovannoni
Paperweight



Rabbit
design Stefano Giovannoni
Salt&pepper



Omini
design Stefano Giovannoni
Napkin tray



Omini
design Stefano Giovannoni
Napkin tray



Omini
design Stefano Giovannoni
Serving tray



Omini
design Stefano Giovannoni
Candle holders



Omini
design Stefano Giovannoni
Candle holders



Omini
design Stefano Giovannoni
Candle holders



Omini
design Stefano Giovannoni
Salt&Pepper



Omini
design Stefano Giovannoni
Napkin holders



Omini
design Stefano Giovannoni
Candle holders



Omini Small Bowl
design Stefano Giovannoni
Bowls



Omini Medium Bowl
design Stefano Giovannoni
Bowls



Omini Large Bowl
design Stefano Giovannoni
Bowls



Omini
design Stefano Giovannoni
Candle holders



Omini
design Stefano Giovannoni
Paper clips holder, business cards holder,
scotch holder, pencils tray



Omini
design Stefano Giovannoni
Candle holders

GHIDINI 1961 INICIHO

is a trademark of
Ghidini Giuseppe Bosco spa

via Gabriele D'Annunzio 27
25069 Villa Carcina (BS) Italy
T +39 030 8980521
F +39 030 8981588
info@ghidini1961.com

Art Direction

Stefano Giovannoni

Press office

press@ghidini1961.com

Sales office

sales@ghidini1961.com

Photos

Fabrizio Bergamo ppg. 2-3, 14-15, 19, 20-21, 24-25, 26-27, 30, 32-33, 36-37, 38-39, 40-41, 44-45, 46, 48-49, 53, 56-57, 58, 60-61, 62-63, 66, 68, 70-71, 72-73, 76-77, 78, 80-81, 85, 86, 88-89, 92-93, 94-95, 96-97, 100-101, 103, 106-107, 109, 111, 114-115, 116, 117, 118, 122-123, 126, 128, 131, 132, 134, 136-137, 140-141, 142-143, 146-147, 150, 152-153, 156-157, 160-161, 165, 167, 168-169, 172-173, 175, 181, 184-185, 188-189, 192-193, 194-195, 198-199, 203, 204-205, 206-207, 210-211, 212-213, 214-215, 216-217, 218-219, 220, 222-223, 224, 226-227, 228-229, 232-233, 235, 236, 239, 241, 243, 247, 248, 253, 255, 257, 259, 265, 269, 271, 272-273

Other Photos

Cube Photoproduction ppg. 16-17, 18, 22-23, 28-29, 31, 34-35, 42-43, 47, 50-51, 52, 54-55, 59, 64-65, 67, 69, 74-75, 79, 82-83, 84, 87, 90-91, 98-99, 102, 104-105, 108, 110, 112-113, 119, 120-121, 124-125, 127, 129, 130, 133, 135, 138, 139, 144-145, 148-149, 151, 154-155, 158-159, 162-163, 164, 166, 170-171, 174, 176-177, 178-179, 180, 182-183, 186-187, 190-191, 196-197, 200-201, 202, 208-209, 221, 225, 230-231, 234, 237, 238, 240, 242, 244-245, 246, 249, 250-251, 252, 256, 258, 260-261, 262-263, 264, 266-267, 268, 270, 275, 276-277, 278, 279, 284
Tommaso Sartori ppg. 274

Styling

Candida Zanelli, Rosaria Galli, Serenella Parri

Branding

Christoph Radl, Antonella Provasi

Graphic layout and Printing

Intese Grafiche, Montichiari (Bs)

Many Thanks to:

Bang&Olufsen	Mohebban Milano
Carpet Edition	Rosenthal
Dedar	Salvatori
Dilmos Milano	Sambonet
Ph.Fabrizio Bergamo	Society Limonta
Ph.Giuliano Radici	Stile Original Design
Kasthall	Viabizzuno
L'Idea di Amatori M.Luisa	

www.ghidini1961.com