

# Fast, economical and safe

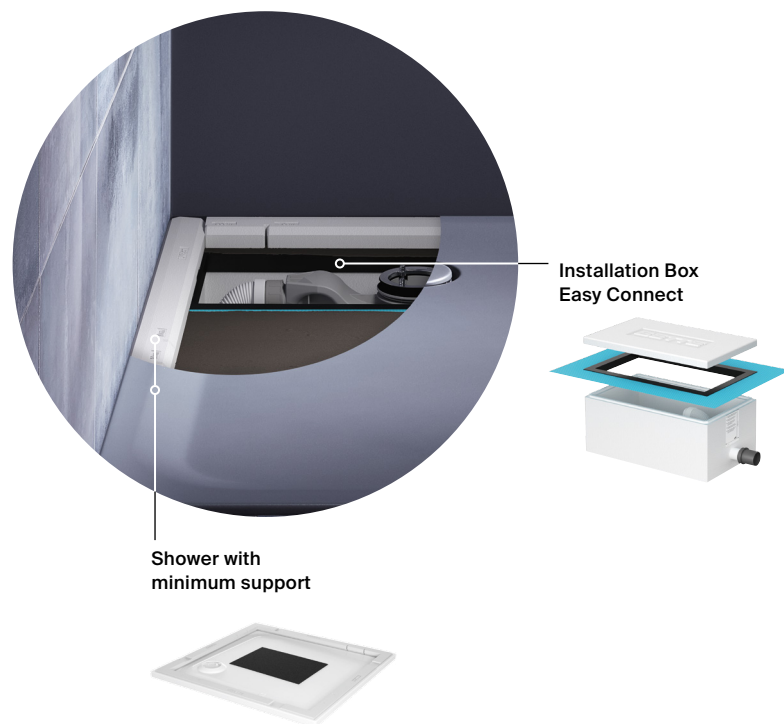
Shower tray installation with a system

Reduce cost and  
time with the new  
installation box  
Easy Connect and a  
shower with the  
minimum support.

**BETTE**

# Water tightness and sound insulation. Less effort and lower costs.

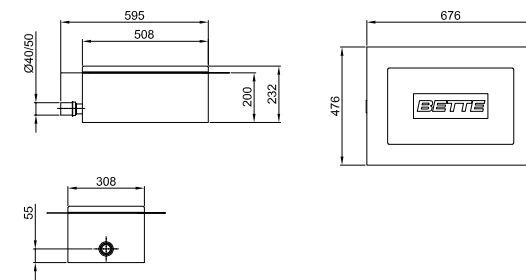
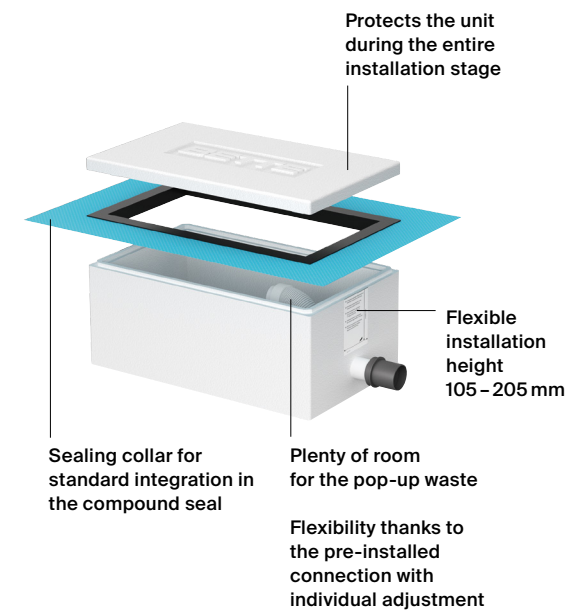
The installation box Easy Connect and minimum support were developed specifically for the requirements of the modern construction industry. Using them in combination greatly reduces the time and materials required when installing barrier-free shower areas. The Plug-and-Play installation solutions guarantee permanent safety and water tightness with the easiest assembly.



# Two steps to standard installation as per DIN 18534.

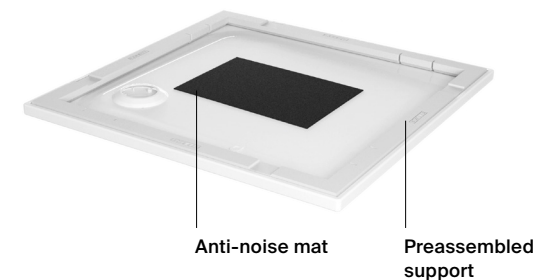
## 1. Basic set

Connection with the Plug-and-Play installation box Easy Connect. The waterproof box contains a ready-made connection to the wastewater pipe, and is fitted directly into the floor construction and compound seal.



## 2. Finish set

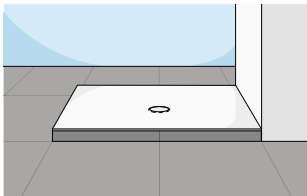
Assembly with the Minimum support. Factory assembled installation system, available for BetteFloor shower areas and shower trays to 35 mm.



Reduce cost and time with the new installation box Easy Connect and a shower with the minimum support.

# Fewer works steps for greater efficiency

Conventional installation  
raised with a tile plinth



Installation steps  
Conventional installation

Installation of the support system

Assembly of the sealing tape  
at the bath rim

Connecting the pop-up waste

Positioning the shower tray  
and leg system

Aligning the installation system

Working the seal into the  
sealing compound

Masonry and tiling  
the tile plinth

Material

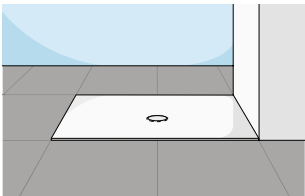
Shower tray

Installation system / leg system

Sealing system

Pop-up waste

System installation with  
Installation box Easy Connect  
and minimum support  
almost flush-to-floor



Installation steps  
System installation

Fitting the installation box  
Easy Connect to the  
unfinished floor and connecting  
to the water supply

Applying the insulation,  
soundproofing and screed

Working the sealing  
collar of the installation  
box Easy Connect into  
the compound seal

Connecting the pop-up waste

Gluing the shower tray  
and minimum support  
to the finished floor

Material

Shower tray with preassembled  
minimum support

Installation Box Easy Connect  
including seal

Pop-up waste

not required

not required

not required

not required

not required

# Precise, flexible and reliable

## All the advantages at a glance

- all parts are factory assembled and perfectly designed to match each other
- standard-compliant seal with no additional sealing tapes
- easy control function of the drain in the event of a leak
- flexible installation height from 105 – 205 mm
- quick and easy installation of the shower by gluing it to the screed
- clean trade interface for clear guarantee allocations
- correction of the maintenance joint with no risk of damaging sealing tapes



Waterproof  
ETAG 022  
DIN 18534

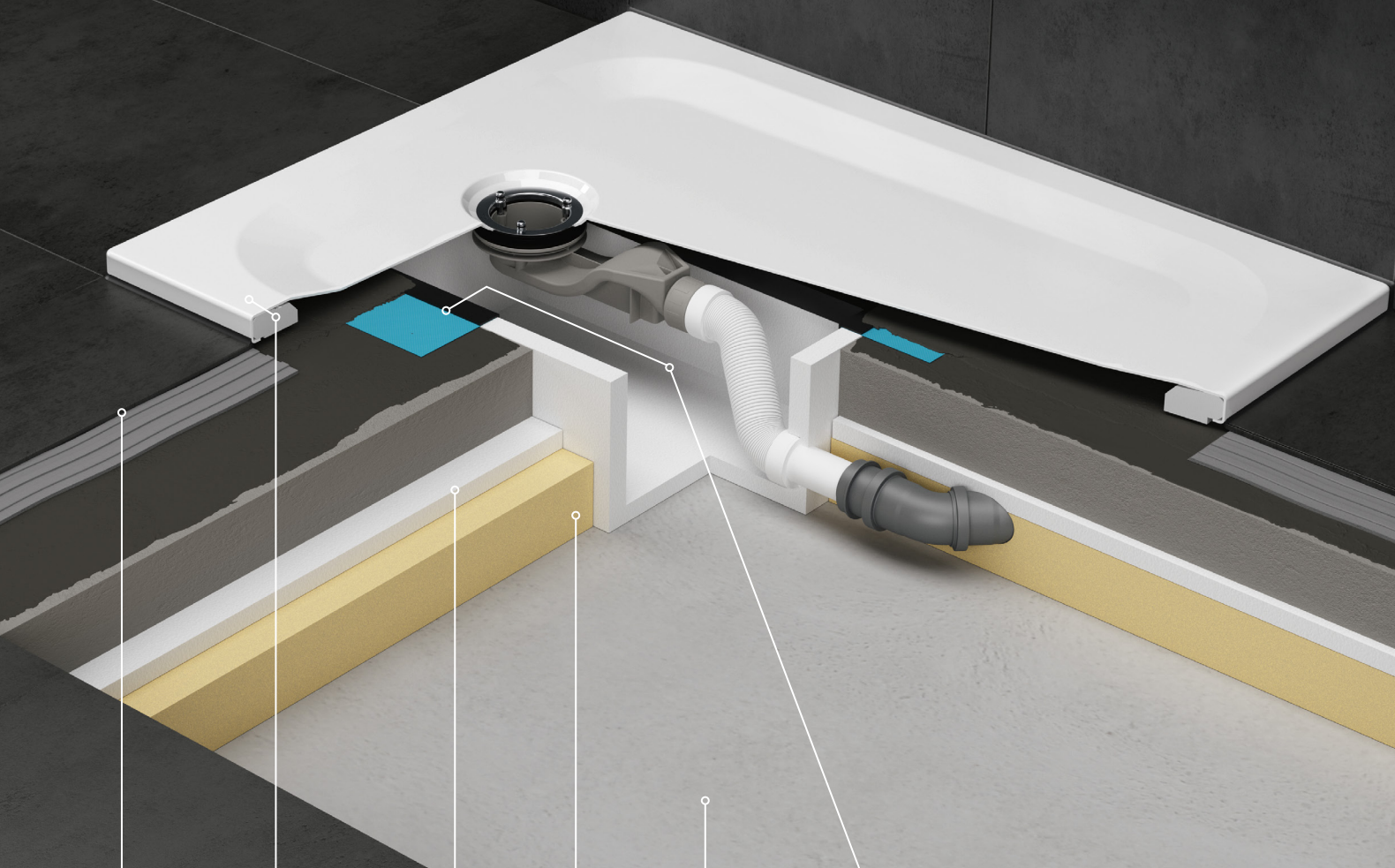


Noise level only  
22 dB(A)  
as per DIN 4109\*

\*structural conditions according  
to test certificate



# Installation with a system, low maintenance and a safe investment



Tiles  
+ adhesive

Shower with  
minimum  
support

no need to seal  
along the edge of  
the bath

Sound-  
proofing

Insulation

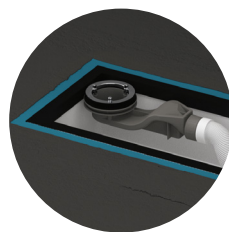
Unfinished floor

Installation Box  
Easy Connect

Easy integration into  
the compound sealing

**Easy inspection**

The box provides  
inspection safety, and  
performs the control  
function of the drain in  
the event of a leak.



## Applications

- Suitable for the installation of shower areas and trays of up to 35 mm.
- Minimum installation height from 35 mm
- Assembly on screed and wooden floors
- Installation option: almost flush-to-floor

# How it's done

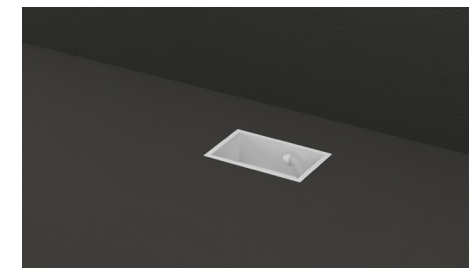


Product film

## Step 1: Connection Installation box Easy Connect



The waterproof installation box Easy Connect contains a preassembled Plug-and-Play connection. This is simply connected to the drainage.



The waterproof Box can then be fitted directly in the floor construction.



The box is then integrated in the bonded seal with the sealing collar (included in the delivery) to comply with the standard.

## Step 2: Assembly of the minimum support



The minimum support is fitted to the shower at the factory. The compact unit consisting of shower and minimum support can be glued directly to the screed or wooden floor.

Bette GmbH & Co. KG  
Heinrich-Bette-Straße 1  
33129 Delbrück  
Germany  
T +49 5250 511-0  
F +49 5250 511-130  
info@bette.de

[www.bette.de/en](http://www.bette.de/en)