



HOME'SOCIETY  
*An Intense Way of Living*



**INTERIOR DESIGN TRENDS 21|22**

**COLOURS, MATERIALS AND TEXTURES**





**AN INTENSE WAY OF LIVING**





# CONTENTS

COLOURS, MATERIALS AND TEXTURES - TRENDS 21 | 22

## SANDSTONE

A grounded combination of seductiveness and calm .....112



## UMBER

Deep earthy neutrals that will bring a grounded and warm aura to any room...112



## PRIME

An analogous colour palette that brings the outside in .....112



## ELETRIC

An energetic colour scheme winded down .....112



## BALANCE

A palette symbolizing the quest for mindfulness .....112



## HARMONY

A harmonious scheme of complementary colours .....112



## FLASHBACK

A bright and playful colour scheme filled with saturated nostalgia .....112



## COTTON

A soft palette to keep you cosy through winter .....112



## EARTH

A back-to-basics warm palette .....112



## SPRUCE

The surest way to spruce up your décor ....112



## OLIVE

The perfect Mediterranean-inspired transitional colour scheme .....112



## FOREST

A walk through nature translated into your home .....112





## #SANDSTONE

Sandstone – the rock – was recognized as a superb material to craft homes; Sandstone – the colour palette – is a superb option to craft your home décor. Sandstone is a set of luscious high-temperature shades, which are in essence lighter and darker variations of tan. These hues transpire a grounded spirit: their inherent association to the earth have to power to spark an affective connection, all while their intense warm dimension bewitches anyone that lays eyes upon them. This palette is perfect for boho-chic interiors, as it creates a perfect balance between the relaxed nature of this interior style and the enticing feeling this colour scheme conveys, ultimately peaking in a highly engaging ambience.



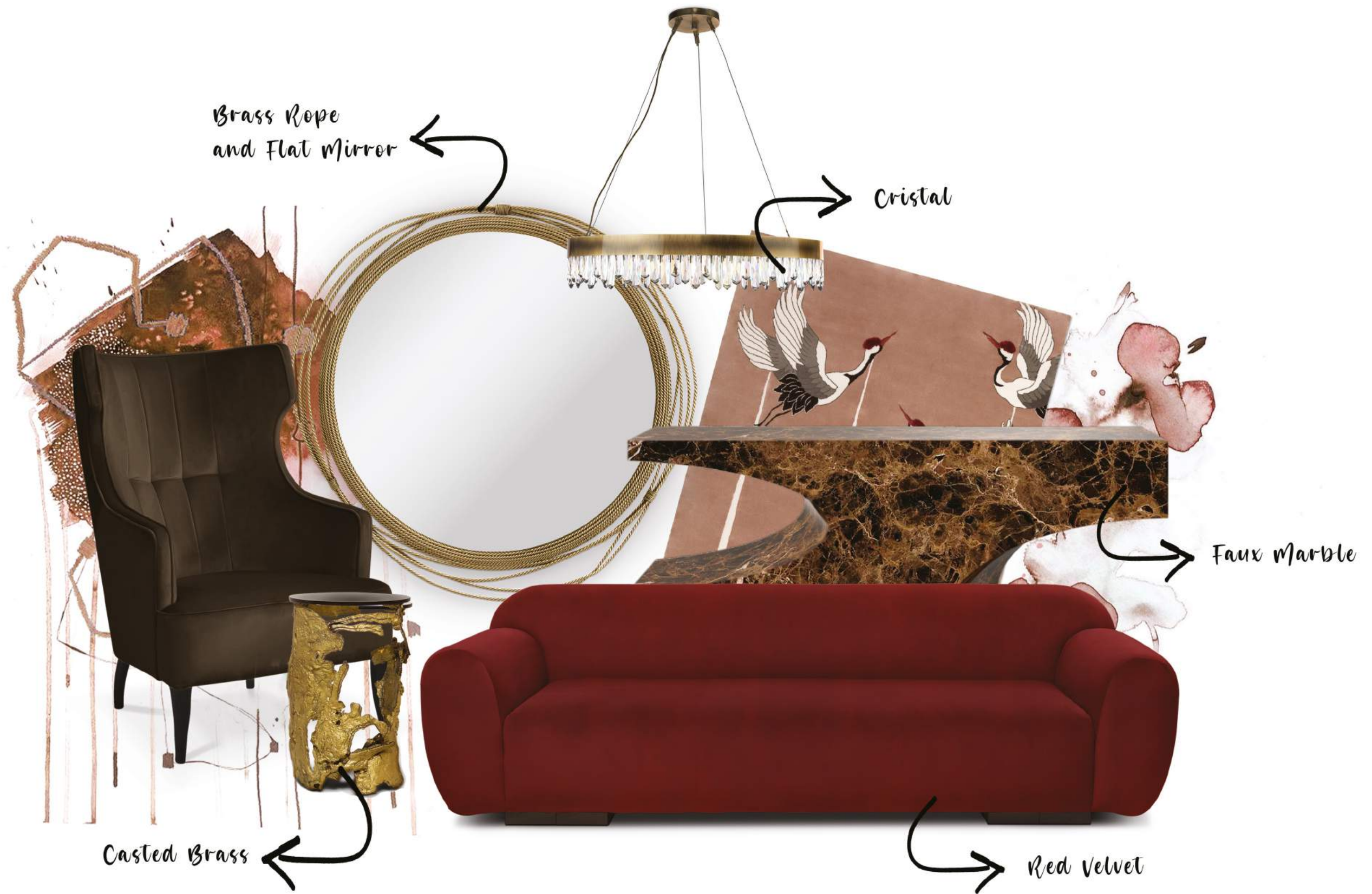
# #SANDSTONE

MAYA Armchair, AMIK Table Light by BRABBU and ANTHEIA Rug by Rug'Society.













FITZROY Sofa, KOI Centre Table, CUZCO I Rug and MYSTIC Painting by BRABBU.







BEGONIA Armchair by BRABBU.







OTTER Sofa, SHERWOOD Centre Table, BALTIC Rug and KOBEN Suspension Light by BRABBU.







MAYA Armchair, SHAKA Wall Light, SEQUOIA Small Side Table by BRABBU and HERON Rug by Rug'Society.







OREAS Single Sofa and SHERWOOD Centre Table by BRABBU.







NAJ Counter Stool and SAKI Pendant Light by BRABBU.







NAICCA Pendant Light, CAY Side Table, NAJ Bench and IRAYA Headboard by BRABBU.





## #UMBER

Umber is a set of deep, vibrant earthy colours that merge warmth and audacity. These intense earthy neutrals take us on an adventurous journey through nature, symbolizing a more connected and slow-paced, but at the same time richer life. Umber can bring heat even to the coldest of interiors, but its grounded nature keeps it from becoming overbearing. Therefore, you can use these shades both as accents and neutrals: pair them with whites and greys for an embracing and daring touch of colour or combine them with other earthy shades for a playful and daring fall look. Their versatility doesn't stop at colour combinations, however. This colour scheme will fit in seamlessly in any style, so whether you're into sophisticated Scandinavian or the sassy seventies, Umber is perfect for you!



# #UMBER

BEGONIA Armchair, BRYCE Side Table and CAUCA Rug by BRABBU.





## #UMBER

Umber – from the Latin umbra, meaning shade – is a natural mixture of iron and manganese oxides and hydroxides that acquires earth tones from cream to brown depending on its composition. When crushed and mixed with paint, umber produces an olive colour known as raw umber; when crushed and burnt, it produces a darker tone known as burnt umber. Due to this material's incredible flexibility, umber's high demand as a colouring agent has been well established ever since the late Renaissance. In fact, Rembrandt, one of the most notable artists of the Baroque period, used umber extensively in his underpaintings. As the years progressed, the love for umber surpassed the barriers of the art world and carried on to interior design – not as a pigment, but as a dashing colour palette that takes on umber's fabulous range as a means to create hearty and mellow ambiances.









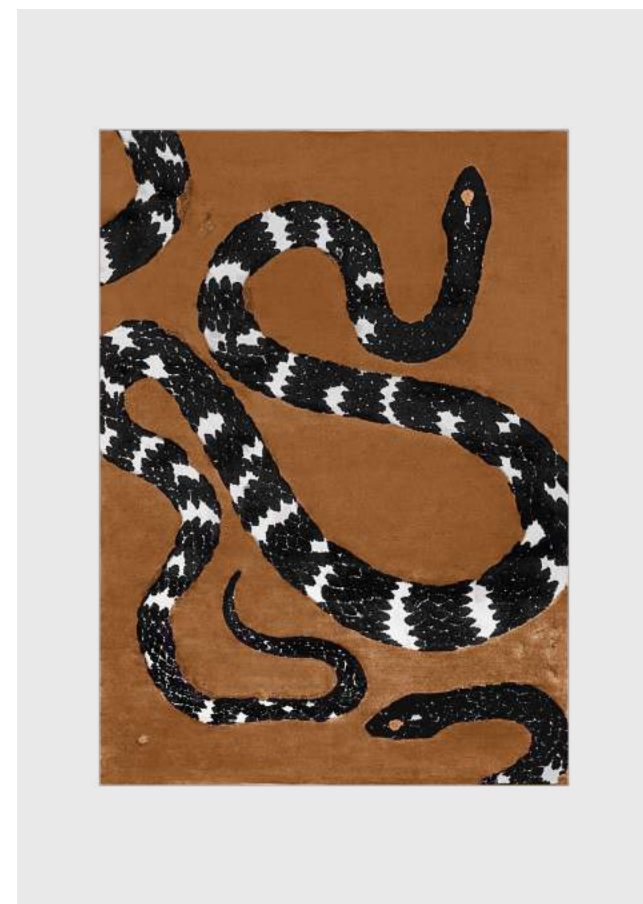
IGUAZU Armchair, GOROKA Side Table and SHAKA Wall Light by BRABBU.







PLATEAU I Dining Table, IBIS Dining Chair, CALLA Suspension Light and COLOSSEUM Console by BRABBU, SNAKE 8 Rug and KOTTA Rug by Rug'Society.







MALAY Armchair, SEQUOIA I Centre Table, YUPIK Rug and BELIZE Mirror by BRABBU







OTTER Sofa, CAY Round Mirror, NIKU Floor Light, KOI Centre Table and KOI Side Table by BRABBU.







CYRUS Table Light, SAARI Sofa, SEQUOIA Small Side Table and SEQUOIA Big Side Table by BRABBU.







CYRUS Table Light, SAARI Sofa, PARDUS Orange Eclectic Pillow, SAKURA Essential Pillow, SEQUOIA Small Side Table and SEQUOIA Centre Table by BRABBU.







KANSAS Bar Chair and AGRA Bar Table by BRABBU.



KAMOS Mirror, NAJ Bar Chair, SEQUOIA Centre Table by BRABBU and SNAKE 8 Rug by Rug'Society.





NAJ Dining Chair, AGRA Dining Table, BOTSWANA Painting, SHAKA Wall Light by BRABBU and TURNER Suspension Light by DelightFULL.







TELLUS Armchair, BOURBON Sofa and SAKI Suspension Light by BRABBU.



NAJ Dining Chair, CYRUS Table Light by BRABBU and SNAKE Rug by Rug'Society.



## #PRIME

Prime is a colour scheme comprised of analogous colours – namely yellow, blue and green – in luscious jewel tones. Their connection to natural elements, allied with their depth, instantly transport us to autumnal landscapes and naturally striking, crisp sceneries, bringing in sunshine, greenery and dreamy lakes to your living space in a subdued and sultry fashion. To make sure not to over-do it on these colours, make use of the 60-30-10 rule: according to this rule, 60% of the room will be the dominant colour, 30% will be the supporting colour, and 10% will be the pop of colour. This can mean, for example, a blue area rug sitting below a green armchair with a yellow throw on it – now it's up to you to let your ideas run wild.



## #PRIME

COLOSSEUM Console, SAYA Mirror, CYRUS Double Wall Light by BRABBU and DISRUPTION Rug by Rug'Society.





# #PRIME

Starting with the basics is the most straightforward way to make almost anything failproof. And what are the basics when it comes to colour schemes? The colour wheel, of course. While monochromatic palettes have been the belle of the ball for the past seasons, the simple but effective wheel offers plenty of other colour harmonies – one of them being analogous colours. Analogous colours are three adjacent colours on the colour wheel, composed of one dominant colour, a supporting colour, and a third colour that is either a mix of the two first colours or an accent colour that pops. While this is a colour harmony, its use can be anything but harmonious in a home if done incorrectly. In fact, when it comes to interiors, muted and nature-inspired analogous palettes are the easiest way to add a chic and welcoming touch of colour to your home, and so, Prime appears.



Steel

Fiberglass With  
Black Laquer

Gold Leaf

Aged Liquid Metal





FITZROY Sofa, DALYAN Armchair, LALLAN II Centre Table, BOTSWANA Painting by BRABBU, VALENCIA Rug by Rug'Society, ARETHA Suspension Light and MILES Floor Light by DelightFULL.







N°20 Dining Chair, PLATEAU Dining Table, ARUNA Wall Light by BRABBU and MADEIRA Rug by Rug Society.







AGRA Dining Table, IBIS Dining Chair by BRABBU and IKE Suspension Light by DelightFULL.







AGRA Dining Table, GAIA Dining Chair by BRABBU and MARCUS Suspension Light by DelightFULL.



AGRA Dining Table, DALYAN Dining Chair by BRABBU and PALM Rug by Rug'Society.





PLATEAU I Dining Table, VELLUM Suspension Light and CAYO Dining Chair by BRABBU.







DALYAN Dining Chair and AGRA Coffee Table by BRABBU.







PLUM Bar Chair, AGRA Bar Chair and NAICCA Pendant Light by BRABBU.



CAYO Counter Stool, HELIOS Mirror, CYRUS Wall Light by BRABBU, OCLI Rug and PRISMA Rugs by Rug'Society.





KENDO Floor Light and ZULU Armchair by BRABBU.







CUZCO Rug, MAYA Armchair and SEQUOIA I Centre Table by BRABBU.





## #ELETRIC

While the magic of artificial lighting keeps your home from getting visibly darker in the colder seasons, taking a cue from nature's progression is known to be a good go-to when it comes to interior design tips. In the crisp months, the electric colours we have come to know become dimmer, less saturated, less energetic – and that is not necessarily a bad thing. Electric – the colour palette – combines an array of cold colours in muted hues, giving you the opportunity to keep your home colourful, but much more relaxing and embracing. So, sit back, unwind, and dare yourself to be surrounded by rich shades that make your house feel like a home.



## #ELETRIC

HULI Round Mirror, GOBI Rug and ARDARA II Console by BRABBU.





## #ELETRIC

Usually, when one thinks “electric” in regards to colour, high saturated cold colours come to mind. In fact, electric blue – a shade with 100% saturation – is one of the most iconic colours in popular culture, and it has become the inspiration for various songs, movies and other art pieces. However, when our interior surroundings do not match those on the exterior, some cognitive dissonance can occur. Fall and Winter are undeniably enchanting, but nevertheless moody seasons. As the sun dims, giving centre stage to dark clouds, colours in nature no longer appear as bright as they did in the Summer - as such, high energy shades would not make much sense, cognitively speaking, in décor. Instead, these colours seem to acquire a deep, oddly comforting and refreshing feel, that longs to be replicated. So why should not the same thing happen to the colours in your home?









HELIOS Mirror, WALES II Sofa, BRYCE I Console by BRABBU, OSCAR Rug by Rug'Society and ABBEY Suspension Light by DelightFULL.







CYRUS Floor Light, ESSEX Armchair, LURAY Side Table by BRABBU and KOTTA Rug by Rug Society.







MECCA II Centre Table, BOURBON Sofa, NAICCA Suspension Light by BRABBU and COUPLE Rug by Rug'Society.







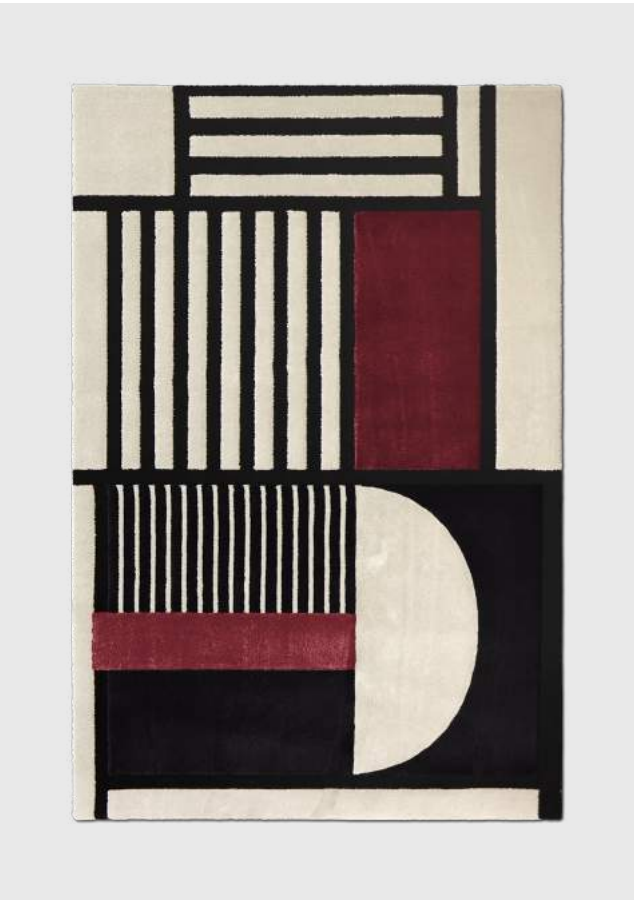
CYRUS Wall Light, OTTER Single Sofa, OTTER Ottoman and CAUCA Rug by BRABBU.







MALAY Armchair, KOI Side Table by BRABBU, PRISMA Rug by Rug'Society and SCOFIELD Floor Light by DelightFULL.







KOI II Dining Table, ZULU Dining Chair, AURUM Suspension Light by BRABBU and OSCAR Rug by Rug'Society.







AGRA III Dining Table, IBIS Dining Chair, LAVI Painting by BRABBU and COLTRANE Suspension Light by DelightFULL.







BOURBON Dining Chair, AGRA Dining Table, NAICCA Wall Light, HUZUNI Painting by BRABBU and AGATHA Rug by Rug'Society.







BOURBON Armchair, KOI II Side Table, HUZUNI Painting by BRABBU, EYE Rug by Rug'Society and SCOFIELD Floor Light by DelightFULL.







# MODERN CONTEMPORARY INTERIOR IDEAS **AN INTENSE WAY OF LIVING**

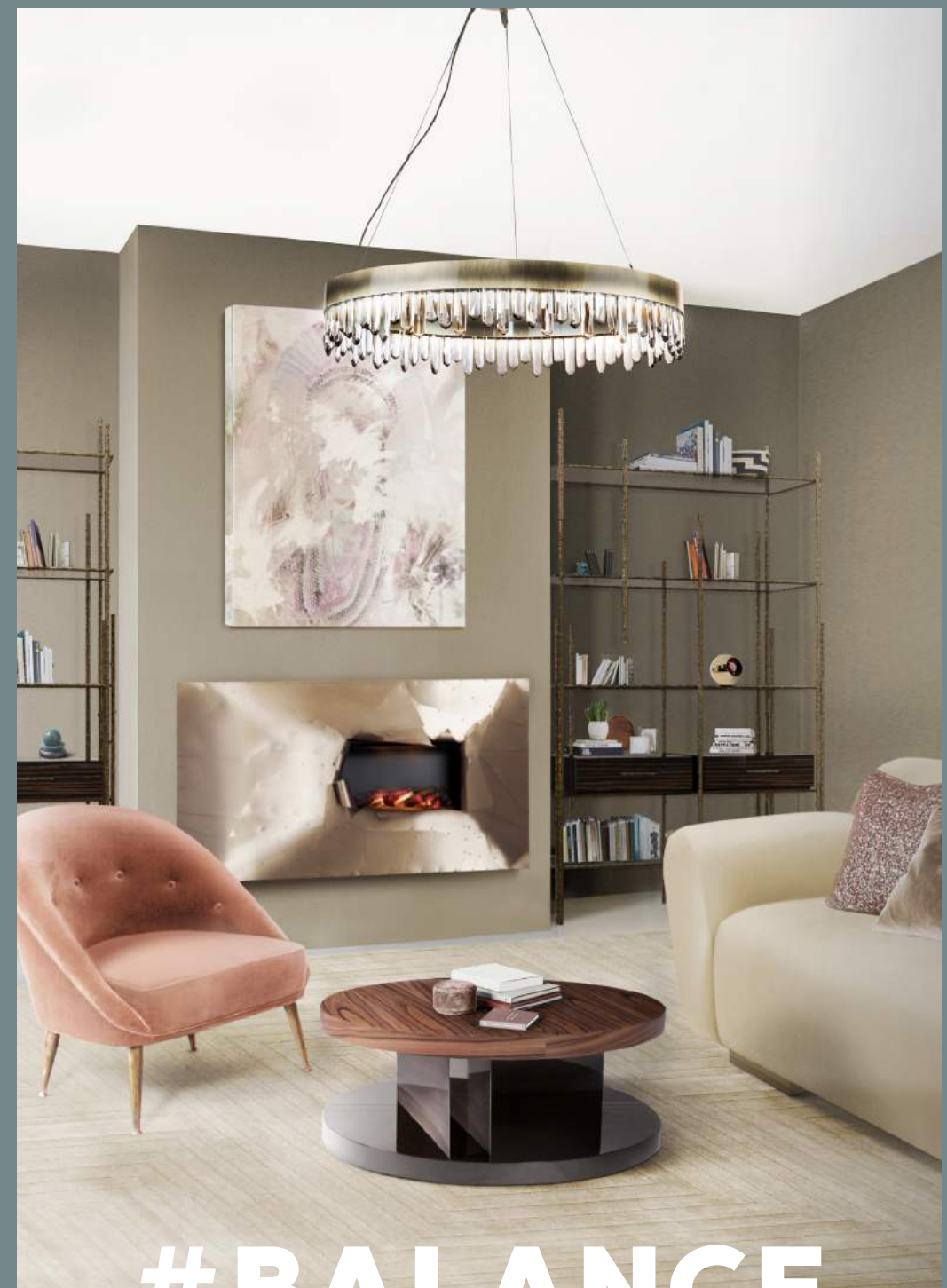
Revisiting the style, Room by room

Download Now →



## #BALANCE

Balance is an ode to our voyage dedicated to restoring internal peace, even amongst so much exterior turmoil. This palette features magnificent shades of pink representing beauty, affection and harmony, and blue, which represents serenity, stability and reliability – making these gorgeous hues a symbol to what we aspire to find in our journey. In the pursuit for mindfulness, the body is naturally the starting point, and what better place to follow it than your second home? Introducing these shades into your house is guaranteed to offer it a sense of calm, inspiration and wisdom. As these are very soft colours, do not be afraid to go all out and use them as the pick for an accent wall or an area rug – after all, it is impossible to get bored of tones that make you feel this good.



## #BALANCE

MALAY Armchair, OTTER Sofa, LALLAN II Centre Table, MAMBU Bookcase, NAICCA Suspension Light and PARDUS Orange Eclectic

Pillow by BRABBU, MUSA Fireplace by Foogo and WHITE Garden Rug by Rug'Society.





## #BALANCE

The world's pace seems to be getting faster and faster. Hours are longer and more stressful; the job market is just as competitive as the stock's one, and what we once turned to for distraction from all the chaos - social media - turned out to be one of the biggest enemies of our mental health. As a society, we have become increasingly aware of how detrimental this rhythm has become to our well-being and so, much necessary escape routes were designed. Self-care – and all its forms - developed into a far-spread trend; meditation and affirmation suddenly were not exclusive to enlightened beings distant from the ordinary citizen: they were being practised before the morning commute. The quest for balance had officially seen its genesis. Its widely recognized in the self-care movement that our home plays a big part in our sense of inner peace – ipso facto, so do its colours.



Emperador Marble

Aged Brass

Botanical Silk Rug





NIKU Floor Light, KOI Console, KAAMOS Mirror by BRABBU and SIMBA Rug by Rug'Society.







NAU Sofa by BRABBU and KOTTA Rug by Rug'Society.







NUI Stool, LALLAN Centre Table, WALES II Sofa, MAMBU Bookcase by BRABBU, OCLI Rug by Rug'Society and SINATRA Suspension Light by DelightFULL.







POPPY Rug, NANOOK Dining Chair, AGRA II Dining Table and CALLA Suspension Light by BRABBU.







ANDES Armchair, LAVI Painting and CAUCA Rug by BRABBU.







COMO Chaise Lounge, MECCA Side Table, NIKU Wall Light, LAVI Painting by BRABBU and SNAKE Rug by Rug'Society.







BOURBON Armchair by BRABBU, SYMPHONY Round Bathtub and ORIGIN Floor Mounted Mixer Tap by Maison Valentina.





## #HARMONY

When using this palette, we suggest that you look at your home as the artwork it is. Harmony is a colour palette comprised of varying shades two complementary colours - blue and brown. Complementary colours are one of the most widely used colour harmonies: it combines colours on opposite sides of the colour wheel, creating a high contrast that automatically makes any interior feel youthful, energetic and bold. Due to this high contrast, these colours are ideal when you wish to draw attention to a focal point – for example, an accent piece or a particular corner. However, exercise caution not to overdo it, as excessive contrast can be hard on the eyes.



## #HARMONY

AURUM Wall Light, HUANG Bedside Table and WALES Bed by BRABBU and AGATHA Rug by Rug'Society.













SIKA 2 Seat Sofa, MECCA Side Table and YAGUA Rug by BRABBU.







LALLAN II Centre Table, NAJ Armchair and KUBEO Rug by BRABBU.







KOBEN Suspension Light, CALLA Table Light, KYAN Console, APIS Dining Table, DALYAN Dining Chair and OKA Dining Chair by BRABBU.







ZULU Bar Chair, AGRA Bar Chair and VELLUM Suspension Light by BRABBU.







ESSEX Armchair and BRYCE Side Table by BRABBU.







CYRUS Floor Light, MAYA Armchair and CAUCA Rug by BRABBU.







MAA Armchair, BRYCE Side Table and POPPY Rug by BRABBU.





## #FLASHBACK

Seasons come, they go, they come back again – and so do trends. In fact, one of the most polarizing decades when it comes to style has been making quite the return: the 80's. The 80's were immortalized by irreverent shapes in both hair and design, holographic fabric and, most notoriously, neon colours. Flashback is an ode to the days of glory of bright and bubbly shades, giving the lively 80's neon palette a muted and warm twist that makes it fit right into today's desired aesthetic, effectively bringing nostalgia, joy and sophistication together. This palette is not for the faint of heart, so we suggest using it as a guide to bold and memorable pops of colour in throw pillows, accent chairs or rugs.



## #FLASHBACK

ESSEX Armchair by BRABBU, STANLEY Floor Light by DelightFULL, TEARS Cocktail Table by KOKET and

COLECCIONISTA Bookcase by Boca do Lobo.





## #FLASHBACK

Film, a flashback can be defined as a device in the narrative by which an event or scene taking place before the present time in the narrative is inserted into the chronological structure of the work. In the seemingly ordinary real world, however, a flashback is nothing more than a memory triggered by a stimulus. Of course, memories can be both good and bad, but who doesn't look at a little trip to the past endearingly? Whether it's through a scent you know from childhood, the flavour of a distanced relative's signature dish or a colour scheme that makes you feel renewed, the senses have a spectacular way of making us remember what we thought was long forgotten. Flashback makes use of the nostalgic power colour can have by using its muted neon shades to take us back to a decade filled with iconic – and sometimes questionable – trends. Can you guess which one?



Hammered Brass

Copper Leaf

Aged Brass





ARDARA II Console, ARUNA Wall Light, KAYAN Mirror by BRABBU and IVO Rug by Rug Society.







N°20 Armchair, LATZA Side Table, CALLA Table Light by BRABBU, JOH Rug by Rug'Society and AMY Floor Light by DelightFULL.



ESSEX Armchair, HELIOS Mirror by BRABBU, CELL Rug and LA LAND Rug by Rug'Society.





ESSEX Armchair and SEQUOIA Centre Table by BRABBU and NORAH Wall Light by DelightFULL.







KOI II Dining Table, AURUM Suspension Light, ZULU Dining Chair, AGRA Console and WARAO Rug by BRABBU.



N°20 Dining Chair, CYRUS Wall Light by BRABBU, REDLEH Rug and CELL Rug by Rug'Society.





STOLA Dining Chair, AGRA Dining Table, HORUS II Suspension Light by BRABBU.







KOI II Dining Table, SEQUOIA Center Table, IGUAZU Armchair and AURUM II Suspension Light by BRABBU.





## #COTTON

Cotton is a set of musky neutrals with warm grey and brown undertones. Although, on paper, this colour scheme might not seem to properly convey the cloudy nature of cotton, when applied to a home this set of velvety moody shades takes on a whole new life. This set is perfect for modern interiors that seem to be craving an extra touch of warmth and snugness without losing the edginess that is inherent to their style – a task that oftentimes presents a bigger challenge than it might seem. However, if modern interiors aren't at play and one is keen on using this palette and even taking it up a notch, mixing and matching soft textures is a fantastic way to do so: shaggy rugs, fluffy pillows, wool blankets – more is more when it comes to comfort.



## #COTTON

PLUM Armchair, SHERWOOD Centre Table, GOROKA Side Table by BRABBU and MERFILUS Rug by Rug'Society.







Casted Brass



Carrara Marble



Velvet Brown







AMIK Table Light, HUANG Sideboard by BRABBU and OCLI Rug by Rug'Society.







COLOSSEUM Console, CYRUS Wall Light by BRABBU and BLACK INK Rug by Rug'Society.







NAICCA Pendant Light by BRABBU.



CLERK Armchair, NAICCA Pendant Light by BRABBU, SNAKE Rug and DÉCO Rug by Rug'Society.

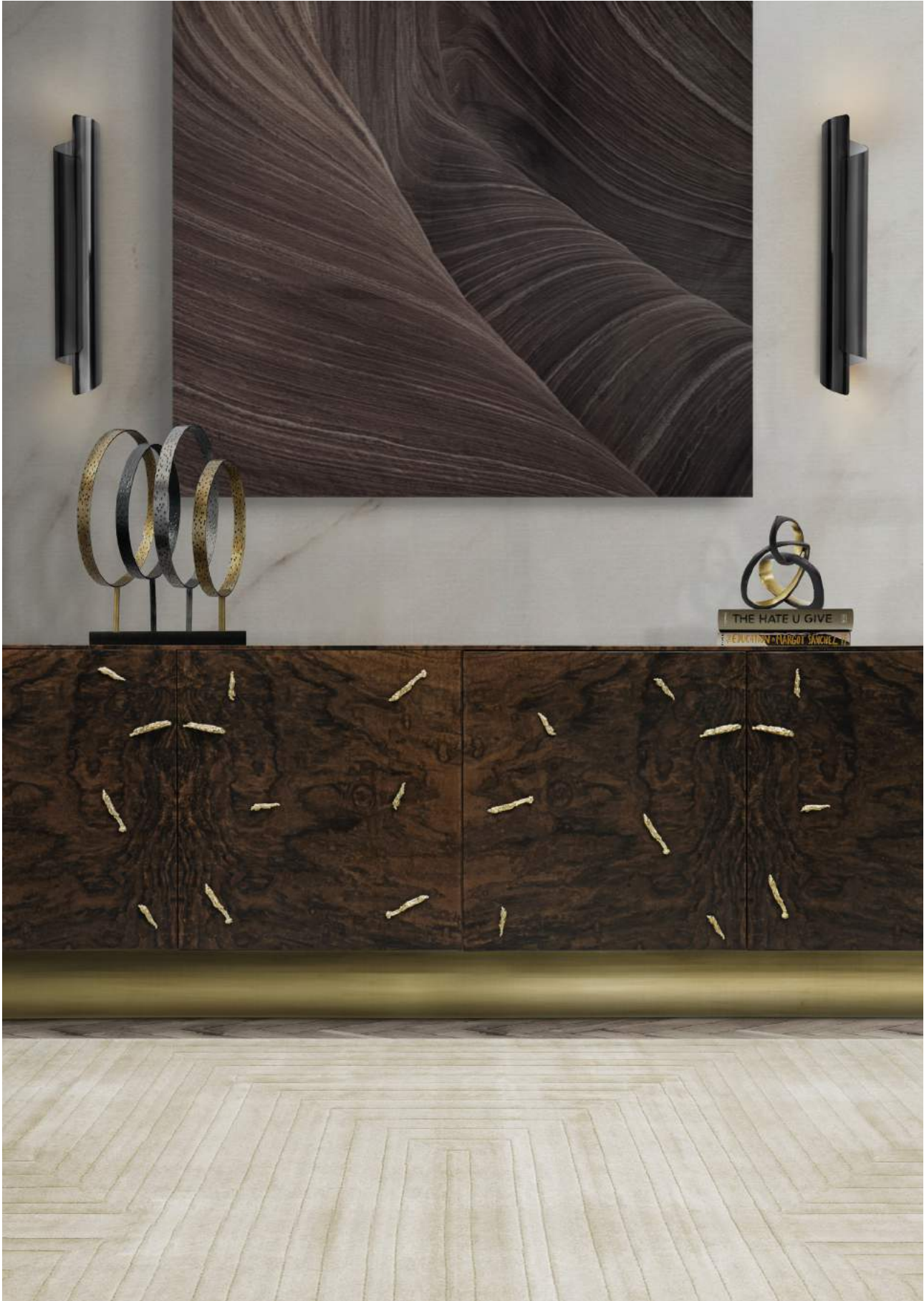




DALYAN 2 Seat Sofa, HELIOS Mirror, BRYCE I Console by BRABBU, OCLI Rug by Rug'Society and ABBEY Suspension Light by DelightFULL.







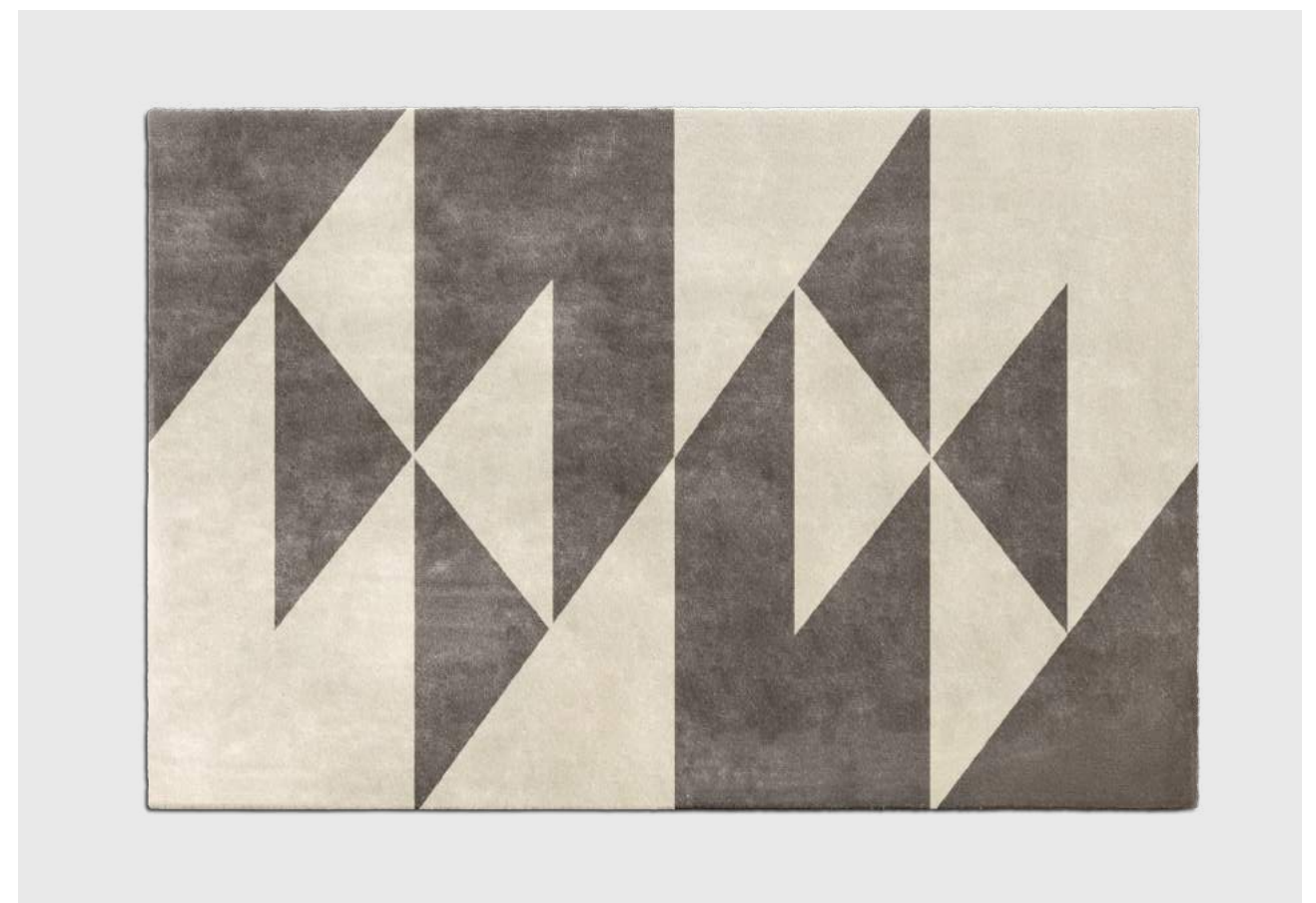
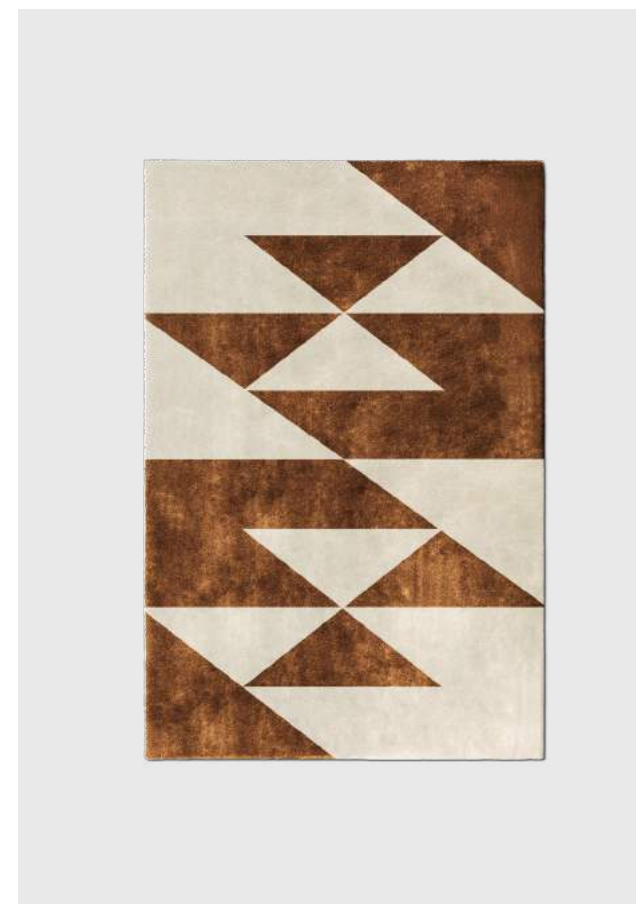
CYRUS Wall Light, BARAKA Sideboard by BRABBU and WHITE GARDEN Rug by Rug'Society.







BRYCE Side Table, SAARI Sofa, HERA Armchair by BRABBU, AQUARIUS Centre Table by Boca do Lobo and ORIGAMI Rug by Rug'Society.







OTTER Sofa, CYRUS Floor Light, LALLAN Centre Table by BRABBU and OCLI Rug by Rug'Society.







PLUM Single Sofa, GOROLA Side Table by BRABBU, APOLO Rug by Rug'Society and LAINE Suspension Light by DelightFULL.







NUKA Dining Chair, PLATEAU I Dining Table by BRABBU, CELL Rug by Rug'Society and TYCHO Rectangular Suspension Light by LUXXU.







KOI I Dining Table, DALYAN Dining Chair by BRABBU and HANNA Chandelier by DelightFULL.







KOI Rug, LALLAN II Centre Table, NAJ Armchair, SAKI Wall Light, SAKI Pendant Light and N°20 Bar Chair by BRABBU.







OKA Armchair and CALLA Table Light by BRABBU.







PLUM Armchair by BRABBU.







CLERK Armchair, BARAKA Desk, NOAKI Stool and AURUM II Suspension Light by BRABBU.







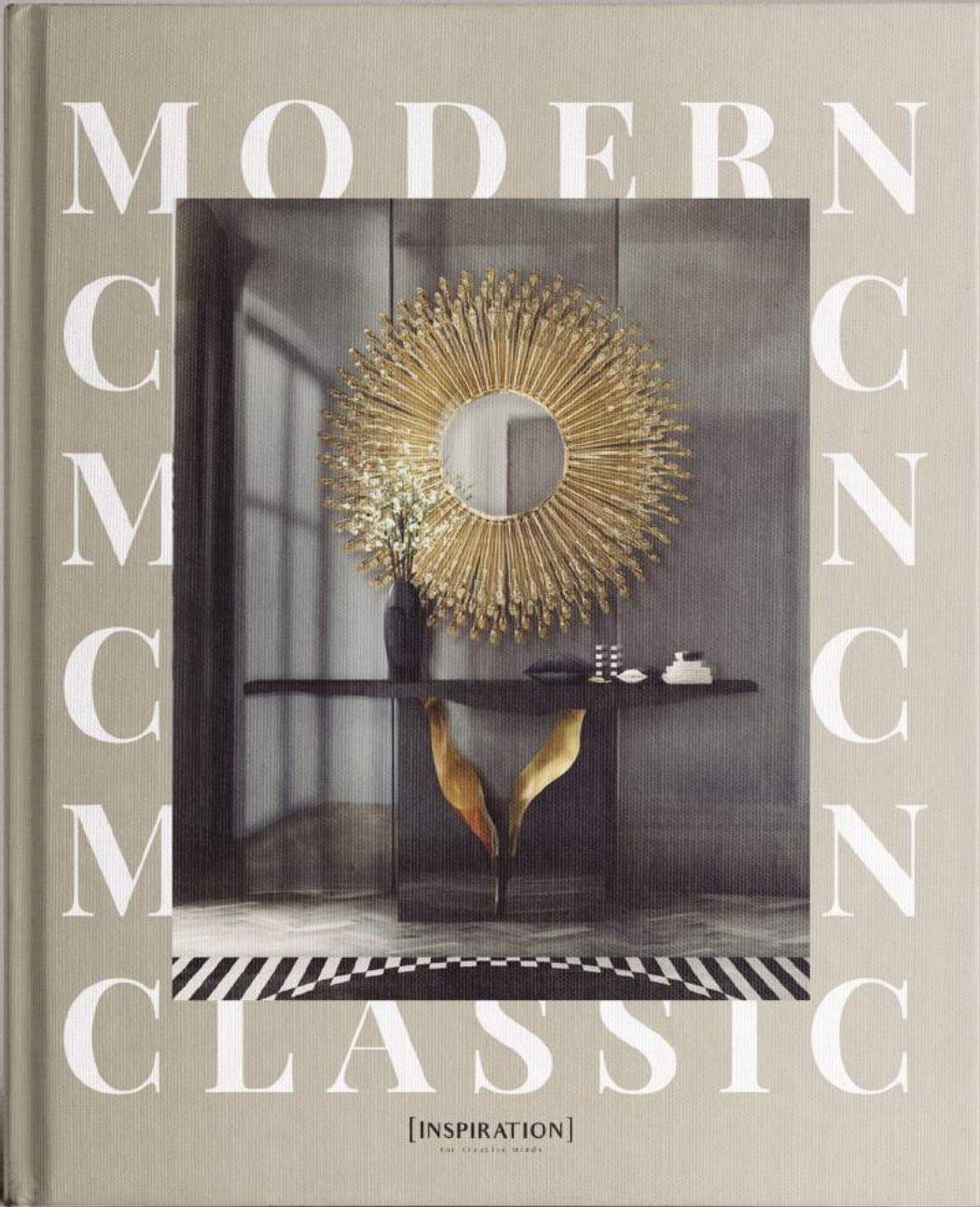
NAICCA Suspension Light by BRABBU, LAPIAZ Bathtub, CRISTAL LARZAC Surface and ELLA Puff by Maison Valentina.



MAYA Armchair, CAY Wall Light by BRABBU, WHITE GARDEN Rug and NEPTUNO Rug by Rug'Society, and EDEN Stone Vessel Sink by Maison Valentina.



BE INSPIRED  
ANYWHERE AT ANYTIME  
ALL YOU NEED WITH JUST A CLICK



[INSPIRATION]  
For Creative Minds

WWW.INSPIRATIONDESIGNBOOKS.COM | INFO@INSPIRATIONDESIGNBOOKS.COM

# TRENDBOOK

FORECASTING THE FUTURE OF DESIGN

OUR SEASONAL TREND BOOKS ARE SEEN AS AN ESSENTIAL  
TOOL BY SOME OF THE WORLD'S BEST BRANDS AND RETAILERS

GET ACCESS NOW AND BRING TRENDS TO LIFE



WWW.TRENDESIGNBOOK.COM | INFO@TRENDESIGNBOOK.COM



## #EARTH

Earth is a warm palette filled with nature-inspired jewel and neutral tones. These deep, rich shades are a constant and reassuring reminder of everything there is available for us to explore and experience, all while making your home feel more welcoming due to their familiar nature. These colours are perfect for modern interiors, as they counteract the sometimes cold and inhospitable sensation these interiors can give off. Besides, given their low saturation and innate presence in the real world, pairing these shades doesn't present any challenge – go ahead and mix and match all of these in one room, or pick and choose as colour accents in a neutral setting!



## #EARTH

HERA Armchair, MECCA Centre Table, SAARI Sofa, CYRUS Floor Light by BRABBU and GRAFF Rug by Rug'Society.





## #EARTH

As social and rational beings, it's in our nature to search for connection, for touch, for meaning. As the industrial revolution steers further and further away in time, we've turned our new-found attention and amazement with what humans can create back to what was already created before us: the Earth. In the past few years, we've come across a new global focus on the planet we inhabit: the longing to explore it, the need to take care of it, the gratitude for having it and, most importantly, the hypothesis that we can find all those things we crave in what it has to offer - after all, there's still so much to discover about the vast oceans that so gracefully cover its surface and the beautiful flora and fauna that is houses. So, if that really is the case, then a home inspired by this remarkable and almost incomprehensible place might just be the answer to our deepest desires.









MANUKA Side Table, MALAY Armchair and BOTSWANA Painting by BRABBU.





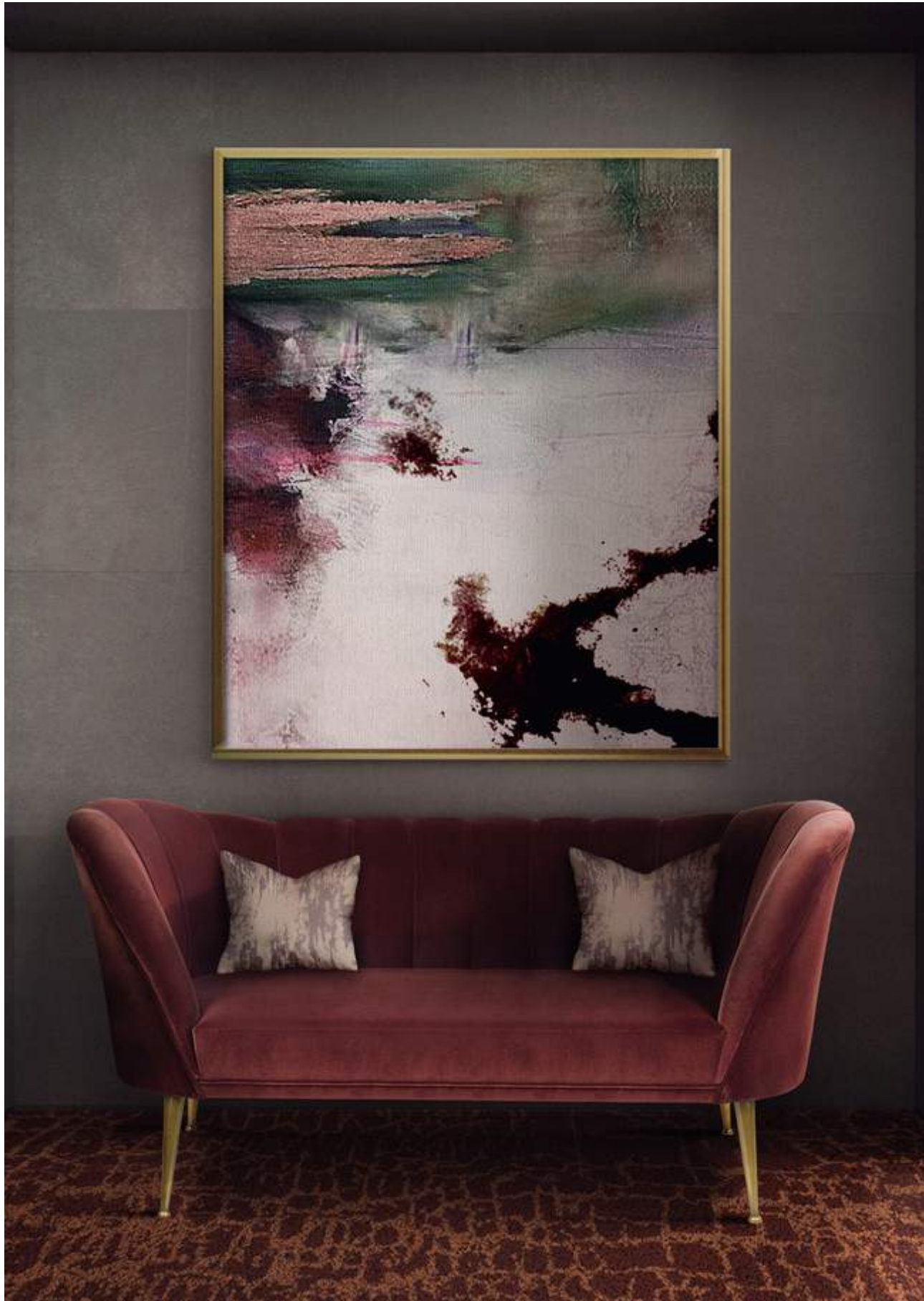


MACUSHI II Rug, DUKONO Armchair and KOI Side Table by BRABBU.



HERA Armchair, HUANG Sideboard by BRABBU, MERMAID Rug, APOLLO Rug and OCLI Rug by Rug'Society.





ANDES 2 Seat Sofa and HIMBA Rug by BRABBU.







LALLAN I Centre Table, ZULU Armchair, WALES II Sofa, CYRUS Floor Light by BRABBU and SIMBA Rug by Rug'Society.







IBIS Dining Chair, KOI Dining Table, GOBI Rug and CALLA Suspension Light by BRABBU.







OKA Armchair, GOROKA Side Table, NIKU Pendant Light and DALYAN Counter Stool by BRABBU.



ZULU Bar Chair, OKA 2 Seat Sofa by BRABBU, ROYALIS Rug and OSLO Rug by Rug'Society.





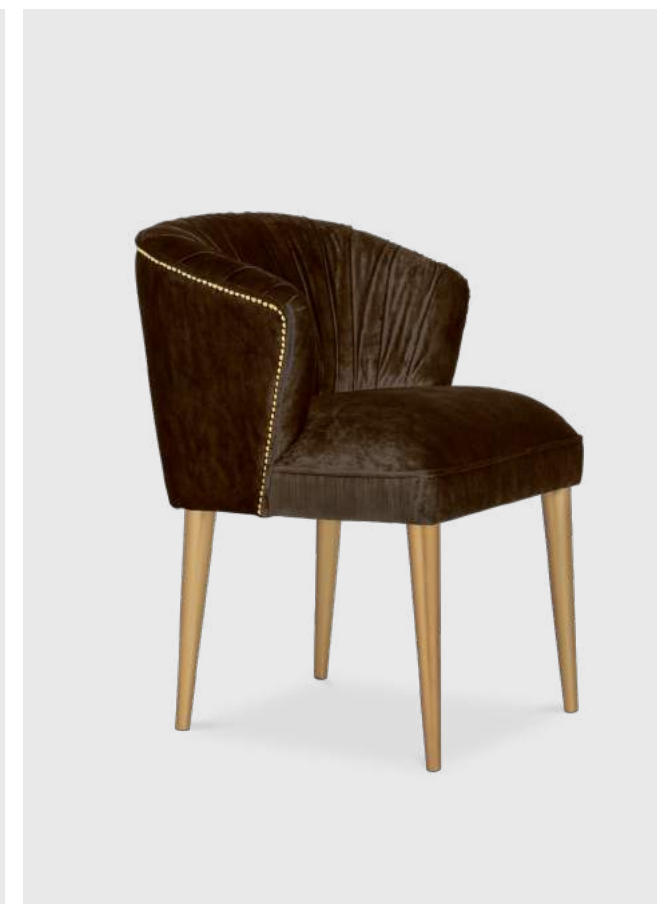
HULI Square Mirror, PLATEAU I Dining Table and IBIS Dining Chair by BRABBU.







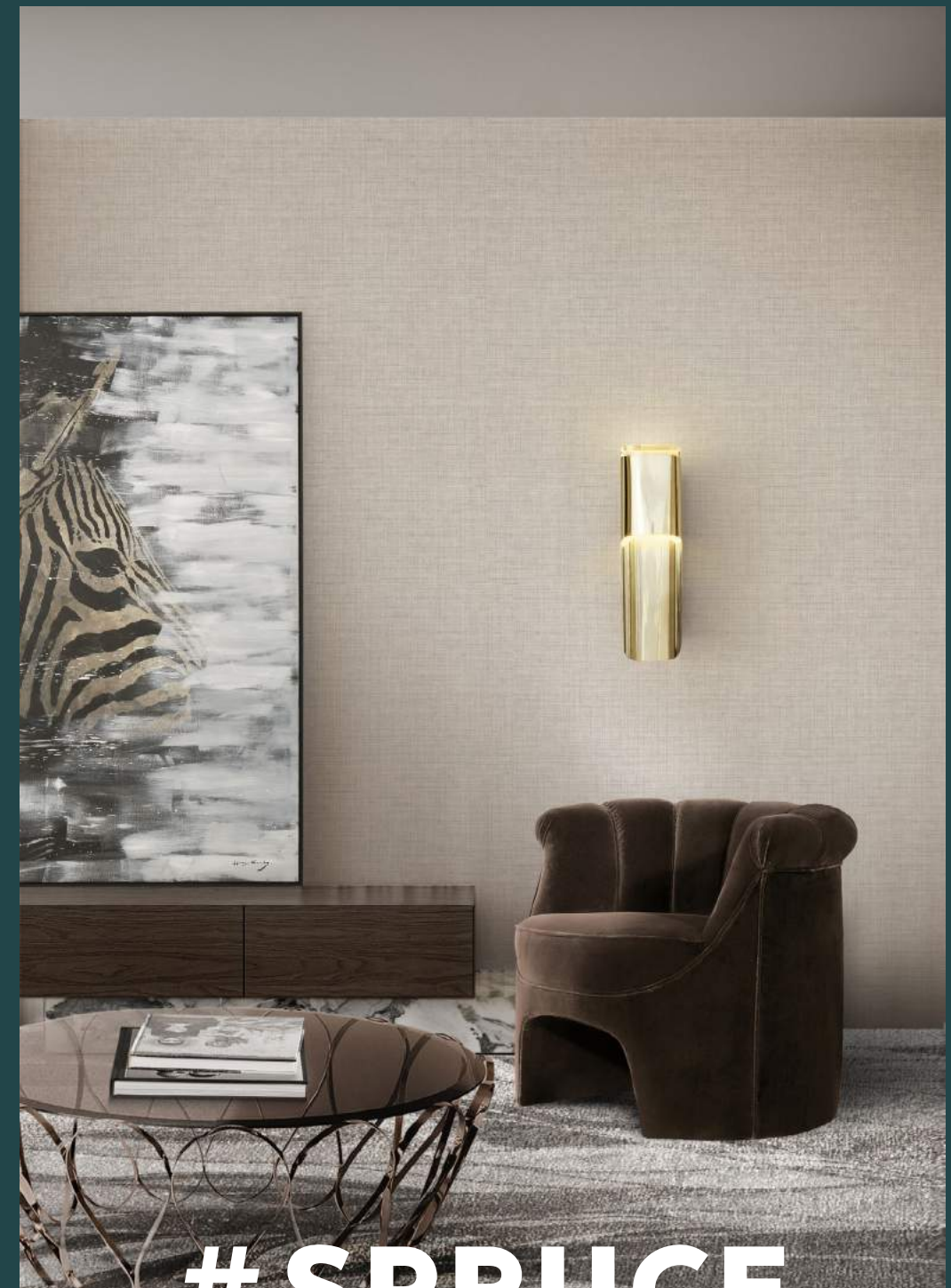
KALINA II Rug, NUKA Dining Chair, IGUAZU Armchair, BARAKA Desk by BRABBU and CARTER Desk Light by DelightFULL.





## # SPRUCE

Spruce is a collection of cold nature-inspired colours that take us on a journey to the origins of this magnificent tree: the green of its resilient needles, the browns of its withstanding cones and the blue of the spectacular sky that stands upon them, gracing them with snowy ornamentations every now and again. This colour palette is indeed a true ode to nature in the winter – but it also happens to be a lovely combination of cold neutrals and a couple of accent colours. Spruce is perfect for mid-century interiors looking for a more wintry feel without letting go of their retro signature. We suggest using the 60-30-10 rule in order to not go overboard with the pops of colour but keep in mind that, at the end of the day, what matters most is that your home speaks to you.



# # SPRUCE

HERA Armchair, PHONG Wall Light, BOTSWANA Painting by BRABBU, HAAR Rug by Rug'Society and  
AQUARIUS Centre Table By Boca do Lobo.







Aged Hammered



Emperador  
Marble



Black Lacquered

Botanical Silk Rug







HERA Armchair by BRABBU.







HORUS II Suspension Light, NAICCA Floor Light, GEORGE Sofa and MECCA II Centre Table by BRABBU and HERON Rug by Rug'Society.







SAARI Sofa, SEQUOIA II Centre Table by BRABBU, TERRAZZO Rug by Rug'Society and ARETHA Suspension Light by DelightFULL.







NAICCA Pendant Light, MALAY Bar Chair, SHAKA Wall Light, BOURBON Sofa, AGRA Dining Table, NAJ Dining Chair and CAUCA Rug by BRABBU.







DAVIS Armchair, CAY Side Table, BOTSWANA Painting by BRABBU and ANTHEIA Rug by Rug'Society.





## #OLIVE

live is a soft and slightly brownish shade of green, inspired by the unique tint olives acquire. Due to its subtle nature, this colour can serve both as a neutral colour and an accent colour, depending on how comfortable you are with using it. As such, Olive – ranging from soft pale variations to darker, muddier shades – is the perfect colour scheme to play around with if you want to dip your toe into colourful interiors, but have grown accustomed to monochromatic neutrals. Experiment with it by applying to accessories, bedding or curtains. This will help you figure out if this is the right colour scheme for you and your home. If it is, feel free to go all out with it: accent walls, sofas, cabinets – with Olive, the sky is the limit.



## #OLIVE

CYRUS Table Light, BRYCE II Console by BRABBU and INKAHOLIC Rug by RugSociety.





## #OLIVE

The olive tree is a symbol of peace, wisdom, fertility, prosperity, luck and tranquillity. Because of its exposed resilient roots, constructed to survive droughts and strong winds, the olive tree symbolizes the eternal link between man and the earth. It is a tree reminiscent of the Mediterranean Sea and the sun that shines upon it, making us wanderlust just at its sight. So, if you're looking to bring balance, warmth and a sense of connection into your home, what could possibly be better than a colour palette inspired by this magnificent tree and its fruits? We're no strangers to more literal interpretations of this trend, such as using olive trees and branches as décor memorabilia, for instance. However, if you can't afford to bring the outside in, in such a bold manner but still crave that welcoming Mediterranean feel, the inspired colour palette will serve you just as well.









CYRUS Table Light, BRYCE II Console by BRABBU and INKAHOLIC Rug by Rug'Society.







NAICCA Suspension Light, DALYAN Dining Chair, OTTER Single Sofa, MECCA Centre Table by BRABBU and PLUTO Rug by Rug'Society.







COMO Armchair, VELLUM Wall Light, MANUKA Side Table by BRABBU and WHITE GARDEN Rug by Rug'Society.







CAYO Counter Stool by BRABBU and MARCUS Pendant Light by DelightFULL







BOURBON Round Sofa, AGRA Coffee Table, NAJ Dining Chair, KALINA I Rug and SCUTUM Wall Light by BRABBU.





## #FOREST

Forest is a set of cold-toned shades inspired by wild flora. The crisp aspect of these shades can seem unwelcoming at first, but it is in fact, quite the opposite. Cold shades are known to have soothing and anxiety-reducing effects – for instance, your heart rate is bound to be faster when in a red room compared to a blue room. Therefore, interior designers have been making use of these tones to craft calming interiors for years. Forest combines the recollection of natural settings with the psychological effect of colour to offer you the most relaxed home living experience you could possibly desire. To amp up this effect further and truly make your home feel like your own peaceful refuge from the hectic world, indulge in soft upholstery and even softer accessories, such as pillows and blankets.



## #FOREST

N°20 Counter Stool and SAKI Pendant Light by BRABBU.







Casted Brass With  
Convex Mirror







BRYCE I Console, CAY Wall Light and HELIOS Mirror by BRABBU.







CANYON Screen and WALES II Sofa by BRABBU.







KUMI Rectangular Mirror, OTTER Single Sofa, MANUKA Centre Table and GOBI Rug by BRABBU.



KUMI Rectangular Mirror, BOURBON Armchair by BRABBU, KOTTA Rug and MADEIRA Rug by Rug'Society.





AGRA Dining Table, CAYO Dining Chair, HORUS II Suspension Light, HUZUNI Painting by BRABBU, RUINS Rug by Rug'Society and NANCY Wall Light by DelightFULL.







PLATEAU II Dining Table, DALYAN Dining Chair and HORUS II Suspension Light by BRABBU.







AGRA Dining Table and KANSAS Dining Chair by BRABBU.



IBIS Armchair by BRABBU, COUPLE Rug, META Rug and REPTILIUS Rug by Rug'Society.





BOURBON Armchair, NAICCA Floor Light, ARUNA Wall Light by BRABBU and NEPTUNO Rug by Rug'Society.







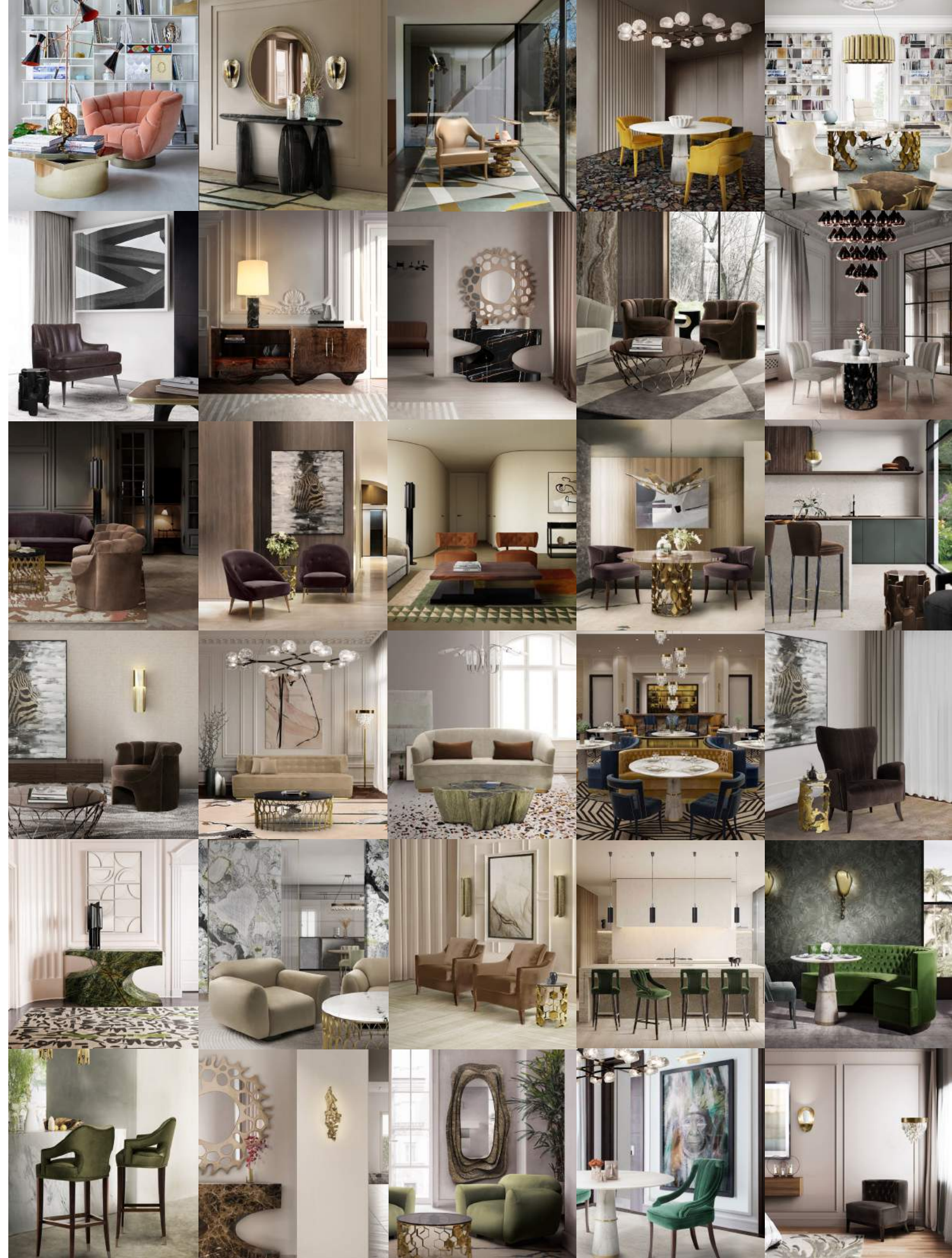
# INTERIORS WITH PERSONALITY AN INTENSE WAY OF LIVING

Room by room, Style by style

Download Book →



**AN INTENSE WAY OF LIVING**







[WWW.HOMESSOCIETY.COM](http://WWW.HOMESSOCIETY.COM) | [INFO@HOMESSOCIETY.COM](mailto:INFO@HOMESSOCIETY.COM)