



FINE ART LAMPS®

---

LIGHTING SINCE 1940

**SUPPLEMENT VOLUME 204**

ALLISON PALADINO | CONSTRUCTIVISM LED | DIAMANTINA | HEXAGONS LED



A state-of-the-art dimmable LED collection of lighting fixtures and sconces created by acclaimed interior designer Allison Paladino incorporates Fine Art Lamps exclusive studio process of dichroic rough-cut sculpted glass, conceived by Fine Art Lamps master glass artist Frank Englesby. Each rough cut gem glass is lit by hidden LED, highlighting a subtle dual-colored reflective brilliance. Dichroic glass was developed by NASA for use in space shuttles. Making dichroic glass requires a complex processing technique in high-temperature vacuum chambers using vaporizing metallic oxides such as magnesium and titanium. The process requires 15 to 45 individual layers totaling a width less than a single human hair. The steel settings are available in silver leaf, gold leaf, and patinated bronze.

**AVAILABLE IN SILVER LEAF, GOLD LEAF AND PATINATED BRONZE**





ALLISON PALADINO





**A. NO. 872750-2** (Shown: gold leaf finish)  
**NO. 872750-1** (Shown: silver leaf finish)  
**NO. 872750-3** (Shown: patinated bronze finish)  
 SCENCE (ADA COMPLIANT)  
 H. 14.5" W. 7" D. 4" (37 cm x 18 cm x 10 cm)  
 US/INTL BULB: Cree LED (QTY 2)  
 GLASS COUNT: 1

**B. NO. 872650-2** (Shown: gold leaf finish)  
**NO. 872650-1** (Shown: silver leaf finish)  
 SCENCE (ADA COMPLIANT)  
 H. 9.5" W. 4.5" D. 4" (24 cm x 11 cm x 10 cm)  
 US/INTL BULB: Cree LED (QTY 2)  
 GLASS COUNT: 1

**C. NO. 873040-2** (Shown: gold leaf finish)  
**NO. 873040-1** (Shown: silver leaf finish)  
 PENDANT  
 H. 20.5" W. 32" (52 cm x 81 cm)  
 Min Ht. 25" (64 cm) Max Ht. 92.25" (234 cm)  
 US/INTL BULB: Cree LED (QTY 20)  
 GLASS COUNT: 10

**D. NO. 873140-3** (Shown: patinated bronze finish)  
 PENDANT  
 H. 24" W. 48.5" (61 cm x 123 cm)  
 Min Ht. 28.5" (72 cm) Max Ht. 95.75" (243 cm)  
 US/INTL BULB: Cree LED (QTY 32)  
 GLASS COUNT: 16

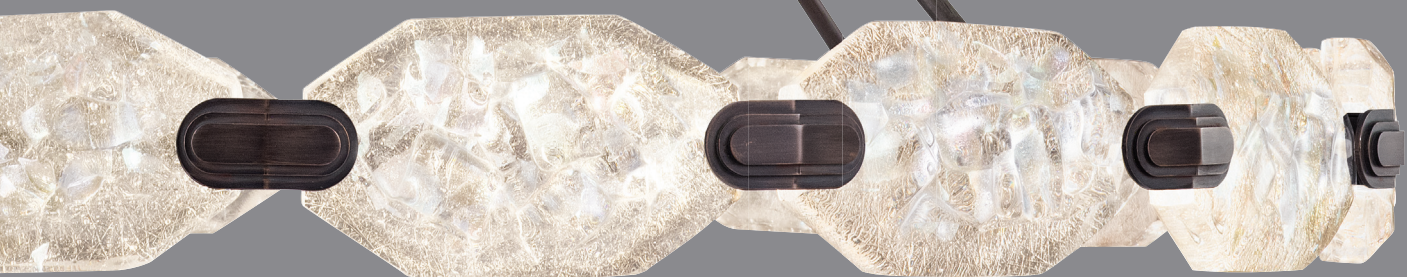
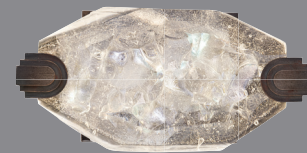
For LED Specifications please refer to Page 17.

Our studio glass is handmade individually. Slight variations in shape, size and markings are the characteristics that distinguish art glass from mass produced glass.





# FINISH OPTIONS







**A. NO. 872840-1** (Shown: silver leaf finish)  
 PENDANT  
 H. 9.5" W. 30" (24 cm x 76 cm)  
 Min Ht. 16.5" (42 cm) Max Ht. 81" (206 cm)  
 US/INTL BULB: Cree LED (QTY 16)  
 GLASS COUNT: 8

**B. NO. 872650-1** (Shown: silver leaf finish)  
 SCONCE (ADA COMPLIANT)  
 H. 9.5" W. 4.5" D. 4" (24 cm x 11 cm x 10 cm)  
 US/INTL BULB: Cree LED (QTY 2)  
 GLASS COUNT: 1

**C. NO. 872750-1** (Shown: silver leaf finish)  
 SCONCE (ADA COMPLIANT)  
 H. 14.5" W. 7" D. 4" (37 cm x 18 cm x 10 cm)  
 US/INTL BULB: Cree LED (QTY 2)  
 GLASS COUNT: 1

**D. NO. 872940-1** (Shown: silver leaf finish)  
 PENDANT  
 H. 9.5" W. 46.25" (24 cm x 117 cm)  
 Min Ht. 16.5" (42 cm) Max Ht. 81" (206 cm)  
 US/INTL BULB: Cree LED (QTY 24)  
 GLASS COUNT: 12

For LED Specifications please refer to Page 17.



Our studio glass is handmade individually. Slight variations in shape, size and markings are the characteristics that distinguish art glass from mass produced glass.









FRONT VIEW



**A. NO. 872840-2** (Shown: gold leaf finish)

PENDANT

H. 9.5" W. 30" (24 cm x 76 cm)

Min Ht. 16.5" (42 cm) Max Ht. 81" (206 cm)

US/INTL BULB: Cree LED (QTY 16)

GLASS COUNT: 8

**B. NO. 872750-2** (Shown: gold leaf finish)

SCONCE (ADA COMPLIANT)

H. 14.5" W. 7" D. 4" (37 cm x 18 cm x 10 cm)

US/INTL BULB: Cree LED (QTY 2)

GLASS COUNT: 1

**C. NO. 872650-2** (Shown: gold leaf finish)

SCONCE (ADA COMPLIANT)

H. 9.5" W. 4.5" D. 4" (24 cm x 11 cm x 10 cm)

US/INTL BULB: Cree LED (QTY 2)

GLASS COUNT: 1

**D. NO. 872940-2** (Shown: gold leaf finish)

PENDANT

H. 9.5" W. 46.25" (24 cm x 117 cm)

Min Ht. 16.5" (42 cm) Max Ht. 81" (206 cm)

US/INTL BULB: Cree LED (QTY 24)

GLASS COUNT: 12

For LED Specifications please refer to Page 17.



# FINISH OPTIONS



Our studio glass is handmade individually. Slight variations in shape, size and markings are the characteristics that distinguish art glass from mass produced glass.



FRONT VIEW



**A. NO. 872840-3** (Shown: patinated bronze finish)

PENDANT

H. 9.5" W. 30" (24 cm x 76 cm)

Min Ht. 16.5" (42 cm) Max Ht. 81" (206 cm)

US/INTL BULB: Cree LED (QTY 16)

GLASS COUNT: 8

**B. NO. 872750-3** (Shown: patinated bronze finish)

SCONCE (ADA COMPLIANT)

H. 14.5" W. 7" D. 4" (37 cm x 18 cm x 10 cm)

US/INTL BULB: Cree LED (QTY 2)

GLASS COUNT: 1

**C. NO. 872650-3** (Shown: patinated bronze finish)

SCONCE (ADA COMPLIANT)

H. 9.5" W. 4.5" D. 4" (24 cm x 11 cm x 10 cm)

US/INTL BULB: Cree LED (QTY 2)

GLASS COUNT: 1

**D. NO. 872940-3** (Shown: patinated bronze finish)

PENDANT

H. 9.5" W. 46.25" (24 cm x 117 cm)

Min Ht. 16.5" (42 cm) Max Ht. 81" (206 cm)

US/INTL BULB: Cree LED (QTY 24)

GLASS COUNT: 12

For LED Specifications please refer to Page 17.



# FINISH OPTIONS



D

Our studio glass is handmade individually. Slight variations in shape, size and markings are the characteristics that distinguish art glass from mass produced glass.



BOTTOM VIEW



A  
42" DIAMETER

Diamantina is a gem-like old hilltop village in Brazil famed for quartz crystal clusters considered since ancient times to have cosmic connections and psychic healing powers. Inspired by nature, Fine Art Lamps master glass artist Frank Englesby and Design Director Ian Thornton have created a collection of lighting as wondrous and unique as nature itself. Building on glass techniques over 2000 years old, and using the core element of natural quartz, the spires are worked by hand at over 2000°F. The raw crystal spires are then rough cut and hand polished to expose the inner core to light. As in the natural world each piece is distinctly unique. All are lit with a state-of-the-art dimmable LED except for the inverted parasol which contains a dozen incandescent candelabra lights. The effect of all when lit is wonderful.



# DIAMANTINA



B



C



D

## A. NO. 870240

PENDANT

H. 9" W. 42" (23 cm x 107 cm)  
Min Ht. 20" (51 cm) Max Ht. 100" (254 cm)  
US BULB: B-10 INTL BULB: B35 E14  
Candelabra, 40W (QTY 12)

## B. NO. 869850

SCONCE (ADA COMPLIANT)

H. 22" W. 6.5" D. 4" (56 cm x 17 cm x 10 cm)  
US/INTL BULB: Cree LED (QTY 2)

## C. NO. 869650

SCONCE (ADA COMPLIANT)

H. 16.5" W. 6.5" D. 4" (42 cm x 17 cm x 10 cm)  
US/INTL BULB: Cree LED (QTY 2)

## D. NO. 869450

SCONCE (ADA COMPLIANT)

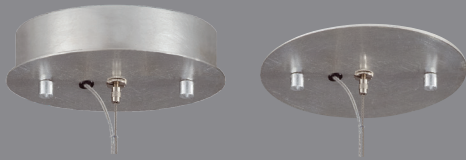
H. 11" W. 6.5" D. 4" (28 cm x 17 cm x 10 cm)  
US/INTL BULB: Cree LED (QTY 2)

For LED Specifications please refer to Page 17.

Our studio glass is handmade individually. Slight variations in shape, size and markings are the characteristics that distinguish art glass from mass produced glass.



DUAL MOUNT CANOPY:  
Includes transformer and removable side wall  
ring for flush mount/recessed application.



APPROXIMATE DIAMETER OF GLASS IS 13.5"



ACCENT TABLE LAMPS

**A. NO. 873740**

DROP LIGHT

W. 12" (30 cm)

Min Ht. 18" (45 cm) Max Ht. 120" (305 cm)

US BULB: G4 LED, 2.5W INTL BULB: G4, G4, 2.5W (QTY 1)

**B. NO. 869210**

ACCENT TABLE LAMP

H. 13.5" W. 13.5" (34 cm x 34 cm)

US BULB: G4 LED, 2.5W INTL BULB: G4, G4, 2.5W (QTY 1)

**C. NO. 869010**

ACCENT TABLE LAMP

H. 22.5" W. 5.5" (57 cm x 14 cm)

US/INTL BULB: Cree LED (QTY 1)



For LED Specifications please refer to Page 17.





A



B



C



D

**A. SCONCE (ADA COMPLIANT)**  
**NO. 842050** (Indoor only)  
 US BULB: B-10 INTL BULB: B35 E14  
 60W, Candelabra (QTY 1)  
**NO. 865050-21** (Indoor/Outdoor)  
 US/INTL BULB: Cree LED (QTY 1)  
 H. 9" W. 7" D. 3.75" (23 cm x 18 cm x 10 cm)

**B. SCONCE (ADA COMPLIANT)**  
**NO. 842250** (Indoor only)  
 US BULB: B-10 INTL BULB: B35 E14  
 60W, Candelabra (QTY 2)  
**NO. 865250-21** (Indoor/Outdoor)  
 US/INTL BULB: Cree LED (QTY 2)  
 H. 14" W. 7" D. 3.75" (36 cm x 18 cm x 10 cm)

**C. SCONCE (ADA COMPLIANT)**  
**NO. 842650** (Indoor only)  
 US BULB: B-10 INTL BULB: B35 E14  
 60W, Candelabra (QTY 3)  
**NO. 865450-21** (Indoor/Outdoor)  
 US/INTL BULB: Cree LED (QTY 3)  
 H. 20.5" W. 7" D. 3.75" (52 cm x 18 cm x 10 cm)

**D. SCONCE (ADA COMPLIANT)**  
**NO. 865650-21** (Indoor/Outdoor)  
 H. 30" W. 7" D. 3.75" (76 cm x 18 cm x 10 cm)  
 US/INTL BULB: Cree LED (QTY 5)  
 Incandescent option not available.

For LED Specifications please refer to Page 17.

Constructivism as an architectural philosophy originated in Moscow in 1919 as an expression of Russian futurism. Fine Art Lamps glass artist Frank Englesby has created a technique of crystal cobbles in the spirit of Constructivism. Individually cast pillow-shaped glass pieces are fused at high temperature in a hand-laid cobblestone pattern of individual lenses creating a fascinating light diffuser and sculptural form. A triumph of studio glass artistry!

State-of-the-art dimmable LED Indoor/outdoor sconces now available in 4 sizes.

Our studio glass is handmade individually. Slight variations in shape, size and markings are the characteristics that distinguish art glass from mass produced glass.



# HEXAGONS LED



## A. SCONCE (ADA COMPLIANT)

**NO. 865050-12** (Indoor only)

US BULB: B-10 INTL BULB: B35 E14

60W, Candelabra (QTY 2)

**NO. 865050-22** (Indoor/Outdoor)

US/INTL BULB: Cree LED (QTY 1)

H. 9.75" W. 7.25" D. 3.75" (25 cm x 18 cm x 10 cm)

## B. SCONCE (ADA COMPLIANT)

**NO. 865250-12** (Indoor only)

US BULB: B-10 INTL BULB: B35 E14

60W, Candelabra (QTY 2)

**NO. 865250-22** (Indoor/Outdoor)

US/INTL BULB: Cree LED (QTY 2)

H. 15" W. 7.25" D. 3.75" (38 cm x 18 cm x 10 cm)

## C. SCONCE (ADA COMPLIANT)

**NO. 865450-12** (Indoor only)

US BULB: B-10 INTL BULB: B35 E14

60W, Candelabra (QTY 3)

**NO. 865450-22** (Indoor/Outdoor)

US/INTL BULB: Cree LED (QTY 3)

H. 20.5" W. 7.25" D. 3.75" (52 cm x 18 cm x 10 cm)

## D. NO. 865650-22 (Indoor/Outdoor)

SCONCE (ADA COMPLIANT)

H. 30" W. 7.25" D. 3.75" (76 cm x 18 cm x 10 cm)

US/INTL BULB: Cree LED (QTY 5)

Incandescent option not available.

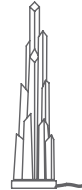
For LED Specifications please refer to Page 17.

Indoor/Outdoor dimmable LED sconce of individual clear glass hexagonal forms fused at 1400°F to a formed glass panel with raised clear glass borders. A background flashing of warm white glass creates a fine contrast when illuminated. Exposed metal in hand-applied silver finish.

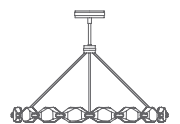
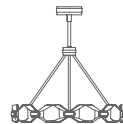
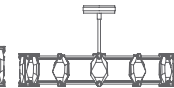
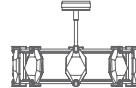
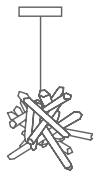
Our studio glass is handmade individually. Slight variations in shape, size and markings are the characteristics that distinguish art glass from mass produced glass.

# LED SPECIFICATIONS

All product listed with the exception of G4 lighting are CA Title 24 Compliant.



	865050	865250	865450	865650	869010	869210	869450	869650
Lamping	LED: Cree	LED: Cree	LED: Cree	LED: Cree	LED: Cree	LED: Bulb	LED: Cree	LED: Cree
Quantity	1	2	3	5	1	1	2	2
Socket Type	N/A	N/A	N/A	N/A	N/A	G4	N/A	N/A
Wattage	3W	6W	9W	15W	3W	4W	6W	6W
CRI	90	90	90	90	90	80 est	90	90
Color Temp	2700	2700	2700	2700	2700	3000	2700	2700
Drivers	US: 110V CE: 220V*	US: 110V CE: 220V*	US: 110V CE: 220V*	US: 110V CE: 220V*	US: 110V CE: 220V	US: 110V CE: 220V	US: 110V CE: 220V*	US: 110V CE: 220V*
Dimmable (w/ Electronic Dimmer)	Yes	Yes	Yes	Yes	Yes	Yes	Yes	Yes
ADA	Yes	Yes	Yes	Yes	N/A	N/A	Yes	Yes
Qualifies for LEED Certification	Yes	Yes	Yes	Yes	Yes	Yes	Yes	Yes
Approx. Equiv. Incandescent Fixture Brightness	30Wx1	40Wx1	50Wx1	60Wx1	30Wx1	20Wx1	30Wx1	30Wx1



	869850	873740	872650	872750	872840	872940	873040	873140
Lamping	LED: Cree	LED: Bulb	LED: Cree	LED: Cree	LED: Cree	LED: Cree	LED: Cree	LED: Cree
Quantity	2	1	2	2	16	24	20	32
Socket Type	N/A	G4	N/A	N/A	N/A	N/A	N/A	N/A
Wattage	6W	4W	6W	6W	48W	72W	60W	96W
CRI	90	80 est	90	90	90	90	90	90
Color Temp	2700	3000	2700	2700	2700	2700	2700	2700
Drivers	US: 110V CE: 220V*	US: 110V CE: 220V	US: 110V CE: 220V*	US: 110V CE: 220V*	US: 110V CE: 220V*	US: 110V CE: 220V*	US: 110V CE: 220V*	US: 110V CE: 220V*
Dimmable (w/ Electronic Dimmer)	Yes	Yes	Yes	Yes	Yes	Yes	Yes	Yes
ADA	Yes	N/A	Yes	Yes	N/A	N/A	N/A	N/A
Qualifies for LEED Certification	Yes	Yes	Yes	Yes	Yes	Yes	Yes	Yes
Approx. Equiv. Incandescent Fixture Brightness	30Wx1	20Wx1	30Wx1	30Wx1	30Wx8	30Wx12	30Wx10	30Wx16

\*0-10V dimming, only



STYLE	PAGE NO.	WEIGHT	WEIGHT (kg)	SWITCH	CANOPY DIMENSIONS	CANOPY DIMENSIONS (CM)
842050	15	8	4			
842250	15	8	4			
842650	15	10	5			
865050-12	16	6	2.8			
865050-21	15	7	3.2			
865050-22	16	6	2.8			
865250-12	16	8	3.7			
865250-21	15	10	4.6			
865250-22	16	8	3.7			
865450-12	16	12	5.5			
865450-21	15	15	6.9			
865450-22	16	12	5.5			
865650-21	15	22	10			
865650-22	16	25	11.4			
869010	14	13	6	ON/OFF		
869210	14	12	5.5	ON/OFF		
869450	13	8	3.7			
869650	13	12	5.5			
869850	13	17	7.8			
870240	13	120	54.6		3"H x 10½"W	3"H x 10½"W
872650-1	3, 6	5	2.3			
872650-2	3, 8	5	2.3			
872650-3	10	5	2.3			
872750-1	3, 6	11	5			
872750-2	3, 8	11	5			
872750-3	3, 10	11	5			
872840-1	6	70	31.9		4½"H x 7"W	4½"H x 7"W
872840-2	8	70	31.9		4½"H x 7"W	4½"H x 7"W
872840-3	10	70	31.9		4½"H x 7"W	4½"H x 7"W
872940-1	6	120	54.6		4½"H x 9 ¼"	4½"H x 9 ¼"
872940-2	8	120	54.6		4½"H x 9 ¼"	4½"H x 9 ¼"
872940-3	10	120	54.6		4½"H x 9 ¼"	4½"H x 9 ¼"
873040-1	3	60	27.3		4½"H x 7"W	4½"H x 7"W
873040-2	3	60	27.3		4½"H x 7"W	4½"H x 7"W
873040-3	3	60	27.3		4½"H x 7"W	4½"H x 7"W
873140-1	3	100	45.5		4½"H x 9 ¼"	4½"H x 9 ¼"
873140-2	3	100	45.5		4½"H x 9 ¼"	4½"H x 9 ¼"
873140-3	3	100	45.5		4½"H x 9 ¼"	4½"H x 9 ¼"
873740	14	25	11.4		1½"H x 5½"W	1½"H x 5½"W

## SHOWROOMS

DALLAS | HIGH POINT | MIAMI | MOSCOW

## CORPORATE HEADQUARTERS

5772 Miami Lakes Drive East, Miami Lakes, FL 33014

☎ 305.821.3850 ☎ 305.821.1564 | [www.fineartlamps.com](http://www.fineartlamps.com)

PRINTED IN THE U.S.A.