



MAITLAND-SMITH®

2013





MAITLAND-SMITH

2013



008

OCCASIONAL

Occasional Tables
Cocktail Tables
Center Tables
Console Tables

067

CABINETRY

Chests of Drawers
Chiffoniers
Bookcases/Display

078

DINING

Dining Tables
Bistro Tables
Dining Chairs & Barstools
Sideboards & Servers
China Cabinets

122

HOME OFFICE

Desks
Desk Chairs

137

LEISURE/GAMING

Coordinated Collections
Game Tables
Game Chairs
Bars
Barstools
Bistro Tables
Plasma TV Units

164

BEDS

168

OUTDOOR

CONTENTS



172	UPHOLSTERY
	Occasional Chairs
	Game Chairs
	Stools & Ottomans
	Benches
	Sofas & Chaise Lounges

198	LIGHTING
	Table Lighting
	Floor Lighting
	Wall Lighting
	Chandeliers

231	FLOOR DÉCOR
-----	--------------------

245	WALL DÉCOR
-----	-------------------

257	ACCESSORIES
	Decorative Accessories
	Functional Accessories

319	FINISHES AND LEATHERS
-----	------------------------------

327	CABINET DIMENSIONS
-----	---------------------------

329	REFERENCE
-----	------------------

330	INDEX
-----	--------------



MAITLAND-SMITH

HISTORY & CRAFTSMANSHIP

For over three decades Maitland-Smith has been in the business of creating exquisite and unique decorative accessories, lighting and accent furniture.

Founded by a London antique dealer with the eye of a connoisseur, Maitland-Smith has carried on the tradition of creating stunning accents for the home of the highest quality and breathtaking execution.

From the beginning, our many workrooms have been artisan based and employ time-honored techniques developed before the machine age. Many of these skills date back to the world's earliest civilizations, and are associated with fine quality furniture and decorative arts.

Maitland-Smith is well-known for many hand-crafted specialties, including hand carved tropical mahogany, hand cut and inlaid exotic wood veneers, lost wax cast metal mounts and decorative objects, as well as, traditional vegetable tanned and hand-tooled leather. Other areas of expertise include finely executed porcelains, sophisticated finishing techniques, and detailed hand painting.

Historically the finest handmade furniture and decorative objects were made during the 18th and 19th centuries. Now considered the Golden Age of furniture, it is this era that inspires designs which showcase our finest skills and craftsmanship.

LOST WAX CASTING

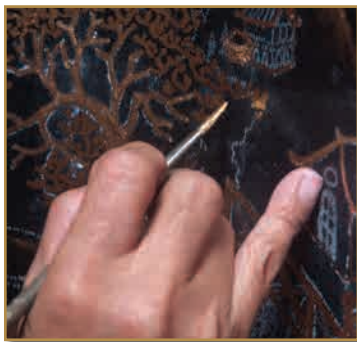


From its inception, the technique of lost wax casting has remained the preferred process of jewelers, sculptors and artisans. The process was developed by the Greeks and Romans and has remained in use since its beginning. The many-step technique begins with a finely carved wax model. This wax model is then surrounded by a special form of concrete which is extremely fine in consistency. This allows the concrete to capture all the detail of the original wax version.

As the concrete dries, two different holes are carved into the material to facilitate casting. The mold is then allowed to harden and cure.

The concrete mold is then filled with molten metal, which in turn melts the original wax model which drains away using a narrow exit hole. When the mold cools, it is broken open to reveal a finely cast metal object which was once wax. It is at this point a hand applied finish is added. Among our most popular finishes are verdigris, aged brass, dark bronze and burnished bronze. All Maitland-Smith castings are molded in brass and other fine metals.

HAND PAINTING



Our artisans continue the skills of the 17th and 18th century's ateliers. Hand painting is undeniably among these traditional crafts.

Unlike machine aided copies or replicas, original work like hand painting is regarded as a unique expression of an artisan and of greater value.

The talented artisans in our ateliers possess the painting skills of their 18th-century counterparts. Attributes like attention to detail and eye-hand coordination are key.

Technical virtuosity is the personal signature of the artist. An expertly handled brush can make techniques like dry-brushing, color blending and feathering seem effortless and original.

METAL WORKING



Among the most versatile of materials used in the decorative arts is metal. Prized for its durability and variety of forms, metal can be worked in a number of fascinating ways, thereby increasing its decorative applications.

Embossing metal dates to its earliest use and is part of the technique of hammering. It is the ability to press metal out of shape without breaking or cracking. Embossing is hammering metal from the back side in order to raise a controlled decoration on the front.

Termed "repousse" by the French, all embossing is hand worked by our trained craftsmen.

LEATHER

Maitland-Smith strives for authenticity in our use of materials. Fine leather, hand colored and tooled has long been a material of choice for desks and library tables, as well as card and game tables. Favored for its durability and ease of replacement when damaged, leather is an integral part of furniture making.

We process our leather using the same materials and techniques favored by master cabinetmakers of the 18th century. Processing leather involves a long, multi-step procedure but some of the most important features are captured in the final steps with hand tooling or embossing.

Originally created by the Bookbinders Guild to apply titles and decorations to their leather volumes, the skills were soon adopted by furniture makers. By using heated brass wheels with incised designs on the edge, artisans can roll the wheel (held by a handle) across the leather and permanently emboss a leather with a decoration.

The resulting depressions are called blind tooling. When a more noticeable design is required, gold or silver leaf is placed on the leather and the heated tool is used to emboss the leather and transfer the gold or silver leaf to the impressions.



HAND CARVED WOOD

Perhaps the most demanding skill in the rich tradition of craftsmanship is hand carving. Archeologists can date early surviving examples over three thousand years old. Fantastic wooden objects have been uncovered in Egyptian tombs alongside jewel encrusted gold and silver artifacts. Other examples date from the Middle Ages, primarily ecclesiastical figures.



The Renaissance was the setting for the reawakening of the decorative arts. Specialized guilds of artisans were formed to advance and protect particular skills. Carvers guilds arose throughout Europe alongside goldsmiths, jewelers and other similar trades.



The richly ornamental styles of the 17th and 18th centuries are a testament to the caliber of craftsmanship available. Our carvers use the same tools and techniques as their 18th-century counterparts. After years of training, their skills are applied to a wide variety of Maitland-Smith items. Examples include our hand carved mahogany dining chairs, occasional chairs, mirror frames and numerous decorative objects.

MARQUETRY & PARQUETRY



As highly regarded traditional furniture crafts, these handcrafted inlay processes began in Germany and Holland.

In the hands of a trained artisan, shaped veneered wood or other suitable material is applied to a furniture frame, forming a mosaic-like pattern or image on the surface.

Marquetry may be floral, or an arabesque, but it must be curvilinear. If the pattern is geometric, it is called parquetry. Both are traditional decorative techniques which add intrinsic value to fine furniture. By the 17th century marquetry in particular reached new heights of skill and innovation, and was prized by patrons of the era. The use of the process was further advanced by the importation of rare and exotic woods from around the world, unique to Western Europe.

EXOTIC SHELL INLAY



The use of exotic seashells has a long history in the decorative arts. Many have strong visual appeal, are durable and can be cut and polished.

The shell's durability lends itself to veneered surfaces and inlaid accents. The wide variety of types available provides a stimulus to creativity and innovation.

At Maitland-Smith we use a variety of shells in traditional and innovative ways. As a complete veneer covering an entire object, either solid or fashioned into patterns, it is labor-intensive with each piece cut, fitted and hand polished. Our artisans have over 30 years experience working with exotic shells and related skills.

As a design leader, Maitland-Smith was the first to offer young penshell as a translucent material for lamp shades and other lighting forms. We developed a method of inlaying translucent young crackled penshell onto molded fiberglass forms creating a new use for a beautiful natural material.



LAMP SHADES

The high quality of our hand sewn lamp shades reflects our company's mission – that of providing our customers with the very best materials and workmanship possible. Since we make our own shades, we control the quality from start to finish.

All hand sewn shades begin with a custom made welded wire frame. This frame or armature determines the shape and size of the shade. The frame is then hand wrapped with a fine muslin ribbon. It is to this fabric covered frame that our skilled hand sewers stitch the outer fabric and inner lining. Dressmaker details including hand-set pleating, smocking and embroidery are determined by the designer. Final steps include the addition of trim at the top and bottom, such as folds, gimps and other custom details.





OCCASIONAL TABLES





3020-038 Occasional Table

Three Tiered Leather Inlay Occasional Table,
Marquetry and Amber Brass Accents
W24 D24 H30



3030-611 Occasional Table

Aged Regency Mahogany Three Tiered
Occasional Table, Satinwood Veneer
W22 D18 H35



3030-642 Occasional Table

Dark Burnished Finished Laurel Burl
Veneer Three Tiered Occasional Table,
One Drawer
W25 D25 H32



3030-574 Occasional Table

Three Tiered Black and Gold Lacquered
Occasional Table, Reeded Tapered Legs
W22 D15 H34



3230-910 Occasional Table

Shanghai Casual Dark Finished Three Tiered
Occasional Table, Gold Gilded Accents
W32 D20 H28



3030-917 Occasional Table

Oval Antique Aubergine Finish Three
Tiered Occasional Table, Rosewood
Veneer, Brass Accents
W28 D21 H27



3030-665 Occasional Table

Laurel Burl Finished Mahogany Occasional
Table, Veneer Top, Center Shelf
W24 D20 H29



3030-759 Occasional Table

Antique Aubergine Finished Mahogany
Occasional Table with Eglomise Top
W31 D31 H32



3030-919 Occasional Table
Black Vendome Finished Round Occasional Table, Marquetry & Antique Brass Accents, Brass Gallery
W18 D18 H29



3230-844 Occasional Table
Distressed Two Tier Walnut Tone Heart Shaped Occasional Table, Petrified Wood Stone Top
W14 D14 H27



3030-832 Occasional Table
Two Tiered Mahogany Finished Occasional Table, Sherwood Brass Gallery and Accents, Brass Top, One Door Opens for Storage
W16 D16 H30



3030-966 Occasional Table
Charleston Mahogany Finished Round Occasional Table, Black Marble Top, Brass Accents
W16 D16 H30



3030-969 Occasional Table
Aged Regency Finished Round Occasional Table, Beveled Inset Glass Top
W18 D18 H28
Complements 3330-587



3630-029 Occasional Table
Napoleon Brown Finished Two Tiered Occasional Table with Marquetry and Brass Accents
W22 D14 H31



3036-051 Occasional Table
Saddle Brown Leather and Mahogany Occasional Table, Brass Nailhead Accents
W22 D22 H28



3040-003 Side Table
Light Mahogany and Sienna Leather Two Tiered Side Table, Brass Mounts
W26 D18 H30



3630-003 Occasional Table
Kensington Mahogany Finished Three
Tiered Occasional Table, Amber Brass
Posts and Accents
W28 D20 H34



3051-281 Occasional Table
Brushed Satina Finished Aluminum
Occasional Table, Zebrano Veneer Inlay
W23 D22 H24



3230-259 Occasional Table
Ash Burl Veneer and Finely Cast Sherwood
Brass Occasional Table, Gold Agate Top
W24 D24 H28



3230-716 Occasional Table
Aged Regency Finished Mahogany
Occasional Table, Brass Mounts
W24 D24 H26



3030-720 Occasional Table
Light Mahogany Finished Veneer Occasional
Table, Antique Brass Gallery and Accents
W19 D13 H33



3230-724 End Table
Aged Regency Finished Mahogany
Serpentine End Table, Sienna Leather
Slides, Brass Accents
W24 D24 H26



3240-044 EndTable
Crotch Mahogany Serpentine End Table,
Sienna Leather Slides, Brass Accents
W24 D24 H26



3230-817 End Table
Aged Regency Finished Primavera Veneer
End Table, Inlaid Florentine Leather on
Pull Out Shelf
W23 D17 H28



3230-894 Occasional Table

Two Tiered Chelsea Mahogany Finished Occasional Table, Inset Beveled Glass, Marquetry Accents
W26 D26 H27



3230-797 Occasional Table

Dark Antique Lido Finished Occasional Table, Marquetry Top
W26 D26 H28
Complements 3330-643



3630-018 Occasional Table

Polished Rosewood Finished Occasional Table, Silver Gilt Fretwork, Nickel Brass Accents
W26 D26 H30



3630-037 Occasional Table

Black Crackled Finished Occasional Table, Red Leather Inlay, Etched Brass Front and Sides, Antique Brass Finished Accents
W28 D18 H30



3230-921 Occasional Table

Aged Regency Finish Occasional Table, Brown Leather Inlay, Milano Brass Accents, One Drawer
W27 D27 H27



3030-959 Occasional Table

Small Two Tiered Spanish Galleon Finished Occasional Table, One Drawer, One Door
W26 D20 H32



3230-709 Occasional Table

Aged Regency Finished Mahogany Occasional Table, Yew Wood Veneer, Brass Accents
W26 D21 H27



3230-723 Occasional Table

Aged Regency Finished Mahogany Two Tiered End Table with Slides, Brass Gallery
W28 D15 H28



3230-867 Occasional Table

Two Tiered Antique Aubergine Finished Occasional Table, Black Leather Inlay with Tooling
W29 D29 H28



3230-911 Occasional Table

Dark Walnut Finished Round Occasional Table with Inset Bronze Glass Top
W28 D28 H24



3230-830 Occasional Table

Ebony Finished Zebrano Veneer Round Occasional Table with Brushed Satina Brass Accents
W24 D24 H28
Complements 3330-766, 3030-775



3230-868 Occasional Table

Two Tiered Antique Aubergine Finished Occasional Table, Zebrano Accents, Inset Beveled Glass
W25 D28 H31
Complements 3330-755



3240-016 End Table

Light Crotch Mahogany Georgian End Table, Finely Cast Brass Mounts
W24 D24 H28



3030-983 Occasional Table

Vintage Finished Brass and Black Leather Inlay Occasional Table, Gold Tooling Accents
W22 D20 H29



3630-049 Occasional Table

Two Tiered Mahogany Finished Occasional Table, Golden Brass Accents
W26 D26 H31



3230-880 Occasional Table

Aubergine Finished Occasional Table, Beveled Glass Top, Emperadora Stone Shelf
W26 D26 H26
Complements 3330-745



3630-017 Occasional Table

Two Tiered Aged Regency Finished Occasional Table, Marquetry Accents
W26 D20 H29



3054-121 Occasional Table

Golden Finished Cast Brass Occasional Table with Black Waxstone Top
W22 D22 H29



3230-893 Occasional Table

Belgravia Rosewood Finished Occasional Table, Faux Shagreen Embossed Leather Top and Shelf, Antique Nickel Plated Hardware
W25 D25 H29



3230-879 Occasional Table

Antique Aubergine Finished Occasional Table, Leopard Motif, Inset Beveled Glass Top
W26 D17 H25
Complements 3330-734



3030-598 Occasional Table

Hand Carved Mahogany Round Occasional Table, Rosewood and Satinwood Veneer, Gilded Feet
W30 D30 H30



3230-889 Occasional Table

Two Tiered Chelsea Mahogany Finished Occasional Table, Amber Brass Accents
W29 D18 H29



3630-001 Occasional Table

Black Lacquer Finished Occasional Table, Champagne Silver Gilded Beveled Glass Top, Silver Finished Brass Accents
W20 D20 H24



HENRIETTA SPENCER-CHURCHILL COLLECTION



5330-012 Bookcase

Regency Finished Mahogany George IV Bookcase, Brass Mounts and Casters
W22 D12 H33



1330-259 Book Stand

Hand Carved Aged Regency Finished Mahogany Georgian Book Stand
W35 D16 H34



3030-610 Occasional Table

Aged Regency Mahogany Tripod Occasional Table, Ball and Claw Foot, One Drawer
W24 D24 H28



3030-673 Occasional Table

Umber Brown Finished Occasional Table, Scalloped Shaped Top
W21 D21 H28



3030-686 Occasional Table

Warm Walnut Finished Veneer Occasional Table, Brushed Satina Brass Accents
W32 D32 H30



3031-059 Occasional Table

Crotch Mahogany Tripod Occasional Table
W24 D24 H28



3630-021 Occasional Table

Natural Antique Finished Occasional Table, Parquetry Accents
W26 D26 H27



3030-734 Occasional Table

Carved Dark Antique Lido Hexagonal Occasional Table with Colonial Black Leather
W25 D22 H29



3030-590 Occasional Table

Aged Regency Finished Occasional Table,
Cerejeira Crotch Veneer Top
W30 D30 H31



3630-023 Occasional Table

Aged Regency Finished Occasional
Table, Marquetry Accents
W40 D40 H30



3030-592 Occasional Table

Hunt Club Finished Occasional
Table, Black Leather Top
W30 D14 H31



3230-917 Occasional Table

Aged Regency Finished Occasional
Table with Marquetry Accents
W30 D30 H29



3630-050 Occasional Table

Chelsea Mahogany and Black Matte Finished
Occasional Table, Green Leather Inlay Top
W26 D26 H28



3630-040 Occasional Table

Handcarved Light Mahogany Occasional
Table with Marquetry Accents
W28 D28 H28





3030-800 Occasional Table
Mahogany Finished Carved Tripod Occasional Table, Crotch Mahogany Veneer
W30 D30 H30



3630-014 Occasional Table
Round Alhambra Finished Occasional Table, Hand Carved Base
W25 D25 H30



3030-953 Occasional Table
Carved Spanish Galleon Finished Occasional Table, White Ash Burl Veneer
W16 D16 H27



3030-844 Occasional Table
Round Aged Regency Finished Tripod Base Occasional Table, Marquetry Accents
W26 D26 H29



3051-278 Occasional Table
Rusty Iron Finished Occasional Table, Emperadora Stone Top
W18 D18 H30



3230-922 Occasional Table
Hand Carved Mahogany Finish Occasional Table, Marquetry and Green Penshell Accents
W30 D30 H32



3230-924 Occasional Table
Positano Finished Occasional Table with Marquetry Accents
W28 D28 H26



3030-906 Occasional Table

Italian Walnut Finished Occasional Table with
Leopard Marquetry Inlay, Brass Accents
W32 D32 H30



3030-894 Occasional Table

Dark Walnut Tone Finished Tripod Occasional
Table, Veneered Marquetry Accents, Top Flips
Up Revealing Storage Space
W29 D29 H31



3230-200 Occasional Table

Antique Black and Old Gold Finished

Occasional Table, Eglomise

Top, One Drawer

W32 D32 H30



3030-993 Occasional Table

Kensington Mahogany Finished Round Occasional
Table, Marquetry and Brass Accents

W30 D30 H29



3030-960 Occasional Table
Round Avignon Cottage Finished Occasional Table, Ambassador Leather Inlay Top
W24 D24 H28



3030-979 Occasional Table
Ebony Finished Round Occasional Table with Gold Gilded Accents
W18 D18 H28



3030-706 Occasional Table
Napoleon Brown Mahogany Finished Occasional Table, Gilded Accents, Antique Brass. Top Rotates to Reveal Hidden Storage.
W19 D19 H31



3031-061 Occasional Table
Mahogany Tripod Occasional Table, Marquetry Top, Gold Metal Leaf Accents
W24 D24 H28



3048-201 Occasional Table
Hand Carved Mahogany Pedestal Occasional Table, Mixed Wood Marquetry Top, Gilt Accents
W26 D26 H31



3630-036 Occasional Table
London Mahogany Finished Occasional Table with Gold Gilded Accents
W17 D15 H26



3054-114 Occasional Table
Ebony Bronze Finished Cast Brass Woman Figure Occasional Table, Glass Top
W18 D18 H28



3054-120 Occasional Table
Sherwood Finished Cast Brass Dolphin Occasional Table, Round Glass Top
W22 D22 H25



3630-047 Occasional Table

Natural Antique Finished Occasional Table
with Tilt Down Marquetry Accented Top
W26 D26 H29



3630-042 Occasional Table

Natural Antique Yew Wood Occasional Table,
Ebonized Base, Golden Brass Accents
W24 D24 H29



3630-044 Occasional Table

Black Lacquer and Polished Mahogany Finished
Occasional Table, Gold Gilded Accents
W29 D29 H26



3630-056 Occasional Table

Casual Distressed Finished Pedestal Occasional
Table, Emperadora Stone Base
W22 D22 H27



3630-052 Occasional Table

Chelsea Mahogany Finished Occasional Table,
Marquetry Top, Amber Brass Accents
W28 D28 H29





3030-978 Occasional Table

Distressed Avignon Cottage
Finished Occasional Table
W25 D25 H25



3054-113 Occasional Table

Amber Finished Brass and Glass
Sphere Occasional Table, Black
Waxstone Top and Base
W18 D18 H25



3230-603 Occasional Table

Regency Finished Mahogany Occasional Table,
Khaya Veneer; Pompeian Brass Mounts
W24 D16 H28



3030-840 Occasional Table

Carved Walnut Finished Tripod Occasional Table, Multicolored Stone Inlaid Top
W26 D26 H30



3054-119 Occasional Table

London Mahogany Finished Two Tiered Occasional Table, Solid Brass Faux Bamboo Supports, Amber Brass Accents
W23 D23 H28



3230-686 Occasional Table

Umbre Brown Finished Mahogany End Table, Black and White Stringing Top
W19 D19 H27



3230-691 Occasional Table

Aged Regency Mahogany Occasional Table, Crotch Veneer
W20 D20 H31





3030-122 Occasional Table

Faded Mahogany and Marquetry
Occasional Table with Green
Waxstone Top, Brass Gallery
W32 D32 H31



3251-426 Side Table

Light Tone Zebra Marquetry Motif Side Table,
Antique Finished Aluminum Tripod Base
W26 D26 H27



3030-210 Occasional Table

Mahogany and Satinwood Hepplewhite
Oval Occasional Table with Stretcher
W24 D17 H24



3030-976 Occasional Table

Southern Rosewood Finished Occasional Table,
Aubergine and Gold Accents, Reverse Painted
Black Beveled Glass Top
W24 D24 H27



3030-632 Occasional Table

Aged Regency Mahogany Finished Two
Drawer Occasional Table, Tapered Legs
W22 D18 H28



3630-011 Occasional Table

Hand Painted Occasional Table, Egyptian Motif,
Amber Brass Accents, Removable Tray
W20 D20 H29



3251-427 Occasional Table

Burnished Gold Finished Iron Occasional Table, Black Waxstone Top
W30 D20 H26
Complements 3451-347



3251-428 Occasional Table

Gold Tone Finished Round Iron Occasional Table, Black Waxstone and Penshell Top
W17 D17 H21



3251-432 Occasional Table

Painted Brass Iron Occasional Table, Yellow Travertine Marble Top, Brass Accents
W29 D29 H28



3220-236 Occasional Table

Light Green Moss Finished Embossed Faux Shagreen Leather Occasional Table, Brass Trim on Top and Bottom
W15 D15 H21



3000-078 Occasional Table

Capiz Shell Inlaid Occasional Table, Polished Brass Accents, Glass Top
W19 D13 H20



3000-079 Occasional Table

Tiger Penshell Inlaid Occasional Table
W16 D16 H19



3030-660 Occasional Table

Dark Antique Lido Finished Planked Top Occasional Table, Mahogany Marquetry Veneer Top
W32 D24 H31
Complements 3330-631



3030-790 Occasional Table

Dark Tone Finished Veneer Occasional Table with Old World Brass Accents
W25 D22 H29



3030-900 Occasional Table

Charleston Mahogany Finished Occasional Table, Rattan and Gilded Accents, Inset Beveled Glass Top
W20 D16 H27



3030-944 Occasional Table

Mahogany Finished Round Occasional Table with Gold Gilded Accents
W29 D29 H30
Complements 3430-951



3030-954 Occasional Table

Spanish Galleon Finished Occasional Table, Primavera Veneer
W29 D25 H31



3220-238 Occasional Table

Vintage Finished Stitched Leather Inlay Occasional Table, Rustic Iron and Colonial Brass Accents
W26 D21 H28



3220-239 Occasional Table

Black Embossed Stitched Crocodile Leather Occasional Table, Nickel Brass Stretcher
W25 D25 H25



3230-883 Occasional Table

Southern Finished Rosewood Veneered Oval Occasional Table with Sherwood Brass Gallery
W27 D22 H28



3630-053 Occasional Table

Dark French Walnut Finished Occasional Table, Deep Red Leather Book Motif, One Drawer
W22 D18 H26



3230-913 Occasional Table
Polished Rosewood Finished Round
Occasional Table, Inset Eglomise Top
W22 D22 H25



3630-024 Occasional Table
Cordoba Finished Occasional
Table, Various Stone Inlay Top
W30 D30 H30



3030-945 Occasional Table
Rosewood and Corsair Mahogany Finished
Occasional Table with Gold Gilded Accents
W26 D18 H27
Complements 3430-953



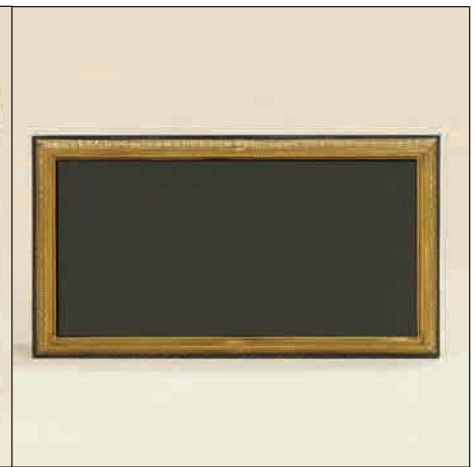
3030-986 Occasional Table
Octagonal Light Brown Glazed Occasional
Table with Veneered Marquetry Accents
W14 D14 H29



3031-116 Occasional Table
Antique Spanish Mahogany Finished
Marquetry Occasional Table, Brass Accents
W24 D20 H29



3054-122 Occasional Table
Ebony Bronze Finish Occasional Table, Brass
and Waxstone Accents, Black Glass Top
W23 D13 H25





3230-915 Occasional Table

Natural Finished Olive Ash Burl
Veneer Occasional Table
W20 D20 H22



3220-214 Occasional Table

Aged Regency Finished Mahogany and Lacquer
Occasional Table, Leather Faux Book Drawers
W25 D25 H30



3251-429 Occasional Table

Antique Finished Cast Aluminum Occasional
Table, Southern Rosewood Marquetry Top
W23 D23 H27



3020-041 Occasional Table

Natural Maple Burl Veneer Accent
Table, Handstitched Leather Base,
Speedometer Motif
W19 D19 H25



3000-083 Occasional Table

Brown Penshell Inlaid Occasional Table
W16 D12 H25



3230-914 Occasional Table

Aged Regency Finished Occasional
Table, Marquetry Accents
W26 D26 H26
Complements 3330-767



3630-022 Occasional Table

Aged Regency Finished Occasional
Table, Old Attic Leather Inlay
W24 D24 H27



3230-620 Occasional Table

Regency Finished Mahogany Occasional Table, Sienna Leather, Pompeian Brass Mounts
W12 D12 H29



3030-967 Occasional Table

Natural Antique Finished Round Occasional Table, Rosewood Veneer, Antique Brass Accents
W19 D19 H30



3230-719 End Table

Aged Regency Finished Mahogany Oval End Table, Sienna Leather Top, Brass Mounts
W21 D15 H27



3230-743 Occasional Table

Distressed Walnut Finished Occasional Table, Spindle Legs, Tooled Veneer Top
W16 D16 H26
Complements 3330-595



3230-720 Occasional Table

Aged Regency Finished Mahogany Oval Occasional Table, Finely Cast Brass Mounts
W28 D21 H27



3630-033 Occasional Table

Polished Cherry Veneer Occasional Table,
Vintage Finished Brass Accents
W28 D28 H27



3030-606 Occasional Table

Aged Regency Mahogany
Marquetry Hepplewhite
Pembroke Table, Brass Casters
W31 D19 H27



3030-775 Occasional Table

Faux Ebony Finished Zebrano Occasional
Table with Tapered Leg
W31 D19 H27
Complements 3330-766, 3230-830



3030-957 Occasional Table

Carved Spanish Galleon Finished
Flip Down Top Occasional Table
W33 D33 H29



3230-796 Occasional Table

Aged Regency Finished Occasional Table,
Oval Shaped Top, Scalloped Gallery
W17 D12 H28



3230-847 Occasional Table

Ebony Finished Occasional Table, Multi
Shell Inlaid Top, Antique Brass Accents
W16 D16 H29





2530-151 Occasional Table

Aged Regency Finished Removable
Tray on Faux Bamboo Stand
W29 D19 H29
Complements 3330-744



3230-923 Occasional Table

Knightsbridge Finished Occasional Table,
Hand Painted Top, Amber Brass Accents
W26 D19 H29



3030-636 Occasional Table

Aged Regency Mahogany Finished Magazine
Rack Tray Table, Faux Tortoise Shell Top,
Removable Tray
W22 D20 H26



3030-886 Occasional Table

Charleston Mahogany Finished Removable
Oval Trays on Vintage Brass Stand
W34 D20 H30



3030-609 Occasional Table

Aged Regency Mahogany and Crotch
Mahogany Veneer Occasional Table,
Brass Trim, Removable Tray
W31 D15 H33



3630-012 Occasional Table

Belgravia and Noir Finished Occasional Table,
Rosewood Veneer, Brass Accents
W24 D17 H30



3230-898 Occasional Table

Chelsea Mahogany Finished Occasional
Table, Amber Brass Accents
W26 D18 H28



3251-431 Occasional Table

Black Embossed Crocodile Leather Inlaid
Occasional Table, Polished Aluminum
W38 D22 H27



3030-933 Occasional Table

Charleston Mahogany Finished Occasional Table, Marquetry Decor, Brass Gallery Accent
W30 D22 H31
Complements 3330-722



3051-280 Occasional Table

Espresso Finished Two Tiered Aluminum Tray Table, Rattan and Various Shell Inlays
W36 D22 H35



3030-965 Occasional Table

Avignon Cottage Finished Removable Tray on Stand, White Ash Burl Veneer; Folding Base
W26 D18 H31



3030-982 Occasional Table

Aged Regency Finished Occasional Table, Ambassador Leather Inlay, Brass Accents
W25 D18 H27



3230-892 Occasional Table

Chelsea Mahogany Finished Occasional Table, Amber Brass Gallery and Accents
W17 D17 H25



3054-118 Occasional Table

Nickel Finished Brass Occasional Table with Black Crocodile Embossed Leather Removable Tray Top
W22 D14 H25



3230-763 Occasional Table

Aged Regency Finished Round Occasional Table, Leather Top, Removable Veneer Tray
W26 D26 H32



3043-201 Nest of Tables

Black Lacquer Finished Nest of Three Tables, Golden Capiz Shell Inlay Tops, Brass Accent
W22 D15 H27



3230-895 Nest of Tables

Set of Three Natural Polished Nesting Occasional Tables, Rosewood Marquetry Accents
W18 D18 H26



3030-895 Nest of Tables

Set of Three Ebony Finished Nest of Tables,
Marquetry Inlay in Animal Motif
22W 15D 27H



3230-888 Nest of Tables

Grisailles Embossed Faux Shagreen
Leather Nest of Tables
W27 D27 H23



3230-725 Nest of Tables

Set of Two Aged Regency Nest of Tables,
Decorative Marquetry Veneer Accents
W26 D20 H25



3030-835 Occasional Table

Aged Regency Finish Occasional Table with
Chestnut Burl Veneer Top and Dark Emperadora
Stone Base, Old Attic Leather Upholstered
Chairs with Brass Nail Trim and Brass Handles
W46 D30 H31



3230-916 Nest of Tables

Set of Three Marquetry Pattern
Nesting Tables, Iron Bases, Abalone
Shell Inlaid Accents
W21 D21 H27



3030-947 Occasional Table

Set of Four Corsair
Mahogany Finished
Occasional Tables,
Leather and
Brass Accents
W14 D15 H28



3230-899 Occasional Table

Round Polished Zebrano Finished Occasional Table, Nickel Brass Accents
W26 D26 H25
Complements 3330-765



3230-860 Occasional Table

Natural Finished Wood Occasional Table with Glass Top
W17 D17 H23



3254-124 Occasional Table

Silver Gilt Finished Aluminum Occasional Table with Brown Penshell Inlaid Top and Shelf
W15 D15 H24



3020-039 Occasional Table

Vintage Leather Inlaid Occasional Table with Rustic Horseshoe Motif
W16 D16 H31



3054-123 Occasional Table

Samoan Finished Aluminum Occasional Table, Black Penshell Inlaid Top
W12 D10 H25



3051-282 Occasional Table

Gilded Iron Occasional Table with Petrified Wood Stone Top
W14 D14 H20



3043-207 Occasional Table

Hand Painted Cast Resin Horn Occasional Table, Snakeskin Stone Base
W19 D12 H32



3043-213 Occasional Table

Dark Wellington Cottage Finished Occasional Table, Handpainted Horn Base, Brass Accents
W22 D22 H25



3054-115 Occasional Table

Etruscan Finished Cast Brass Occasional Table, Tree Motif, Hunt Club Finished Top
W22 D22 H24



3043-214 Occasional Table
 Painted Antique Finished Elephant Occasional
 Table, Tray Top with Brass Gallery
 W22 D15 H26



3043-216 Occasional Table
 Metallic Brown Finished Cast Resin Dog
 with Tray Table, Antique Brass Accents
 W22 D31 H32



3043-210 Occasional Table
 Verdigris Finished Cast Resin Raccoon
 Occasional Table, Antique Brass Accents
 W21 D29 H34



3020-056 Occasional Table
 Verdigris Finished Cast Resin Alligator with
 Marquetry Tray, Antique Brass Accents
 W18 D22 H37



3330-698 Cocktail Table

Burnished Coromandel Lazy Susan Cocktail Table, Chocolate Leather Inlay on Six Pull Outs
W62 D62 H23



3330-732 Cocktail Table

Italian Walnut Finished Round Cocktail Table, Marquetry Accents, Inset Beveled Glass Top
W54 D54 H23



3330-593 Cocktail Table

Aged Regency Finished Mahogany Cocktail Table, Inset Beveled Glass Top, Brass Mounts
W40 D40 H18



3330-775 Cocktail Table

Golden Eye Zebrano Cocktail Table with Inset Glass Top, Samoan Brass Accents
W48 D48 H23



3330-763 Cocktail Table

Cordoba Finished Cocktail Table, Champagne
Eglomise Top, Silver Gilding, Brass Accents
W44 D44 H21



3331-121 Cocktail Table

Parisian Walnut and Antique Aubergine Finished Rotating
Cocktail Table, Leather Inlay with Gold Tooling, Four Doors
Open for Storage
W55 D55 H21



3330-766 Cocktail Table

Ebony Finished Zebrano Veneer Round
Cocktail Table, Nickel Brass Accents
W40 D40 H19
Complements 3230-830 and 3030-775



3330-734 Cocktail Table

Antique Aubergine Finished Cocktail Table, Inset Beveled
Glass Top, Brass Accents, Bottom Shelf Leopard Motif
W64 D39 H24
Complements 3230-879





3330-745 Cocktail Table

Antique Aubergine Finished Cocktail Table, Inset Beveled Glass Top, Emperadora Stone Shelf, Brass Accents
W54 D54 H22
Complements 3230-880



3330-752 Cocktail Table

Corsair Mahogany Finished Cocktail Table, Inset Beveled Glass Top, Brass Accents
W52 D52 H23



3330-755 Cocktail Table

Antique Aubergine and Parisian Walnut Finished Cocktail Table, Inset Beveled Glass Top, Brass Accents
W56 D37 H24
Complements 3230-868



3330-758 Cocktail Table

Dark Walnut and Ebony Finished Cocktail Table, Inset Beveled Glass Top, Waxstone Shelf, Brass Accents
W40 D40 H19



3330-587 Cocktail Table

Aged Regency Finished Two Tier Oval Cocktail Table, Inset Beveled Glass Top, Marquetry on Lower Tray
W48 D30 H22
Complements 3030-969



3330-744 Cocktail Table

Aged Regency Finished Oval Cocktail Table, Tray Top not Removable
W40 D28 H20
Complements 2530-151



3330-603 Cocktail Table

Aged Regency Finished Ash Burl Square Cocktail Table, Parquetry Veneer Top with Tooling, Four Drawers
W48 D48 H21



3330-649 Cocktail Table

Hand Carved Antique Mahogany Cocktail Table, Warm Walnut Laurel Burl and Leather Top
W56 D56 H23



3330-773 Cocktail Table

Handcarved Light Mahogany Finished Cocktail Table with Marquetrie Accents
W50 D50 H22



3330-737 Cocktail Table

Spanish Galleon Finished Plank Top Cocktail Table, Dark Brass Accents
W46 D46 H20



3330-588 Cocktail Table

Hand Carved Relaxed Aged Regency Mahogany Cocktail Table, Inset Beveled Glass Top
W52 D36 H23



3330-631 Cocktail Table

Dark Antique Lido Finished Plank Top Cocktail Table, Mahogany Marquetry Veneer Top
W54 D39 H21
Complements 3030-660



3330-648 Cocktail Table

Dark Antique Lido Finished Cocktail Table, Hammered Antique Brass Panels
W50 D50 H22



3330-643 Cocktail Table

Dark Antique Lido Finished Cocktail Table, Marquetry Planked Top
W54 D54 H22
Complements 3230-797



3330-764 Cocktail Table

Carved Cadiz and Alhambra Finished Cocktail Table, Marquetry Accents
W48 D48 H23



3330-696 Cocktail Table

Hand Painted Black and Gold Cocktail Table, Oak Burl Veneer Top
W40 D32 H20



3330-722 Cocktail Table

Charleston Mahogany Finished Cocktail Table with Marquetry, Solid Brass Gallery and Accents
W54 D39 H23
Complements 3030-933



3330-731 Cocktail Table

Zebrano Veneer Cocktail Table with Gold Tooled Black Leather Top, Stitched Leather iron Legs and Satina Brass Accents
W54 D28 H23



3330-625 Cocktail Table

Etched Dark Burnished Laurel Burl Veneer
Cocktail Table with Lower Shelf, Cabriole Leg
W38 D26 H22



3330-626 Cocktail Table

Dark Burnished Laurel Burl Cocktail Table,
Broken Gilt Accents, Inset Beveled Glass Top
W54 D28 H19



3330-644 Cocktail Table

Polished Mahogany Finished Veneer Cocktail
Table, Aged Regency Patina Brass Accents
W44 D32 H22



3330-743 Cocktail Table

Gold Gilded Finished Cocktail Table, Black Penshell Top
W42 D28 H20



3330-746 Cocktail Table

Kensington Mahogany Finished Cocktail
Table, Marquetry Top, Carved Accents
W54 D38 H21



3330-767 Cocktail Table

Aged Regency Finished Cocktail
Table, Marquetry Accents
W54 D36 H22
Complements 3230-914





3330-760 Cocktail Table

Two Tiered Chelsea Mahogany Finished Cocktail Table, Inset Beveled Glass, Marquetry Accents
W48 D30 H23



3330-622 Cocktail Table

Dark Burnished Laurel Burl Veneer Cocktail Table with Shelf, Inset Beveled Glass Top
W59 D39 H24



3330-690 Cocktail Table

Rosewood Veneer and Reverse Painted Glass Cocktail Table, Gold Gilded Accents
W50 D32 H20



3330-776 Cocktail Table

Positano Finished Cocktail Table with Marquetry Accents
W58 D32 H22



3330-738 Cocktail Table

Camden Passage Finished Cocktail Table, Ambassador Leather Inlay
W55 D40 H22



3330-748 Cocktail Table

Dark Wellington Cottage Finished Cocktail Table, Multicolored Stone Marquetry Top
W60 D39 H21



3330-774 Cocktail Table

Ceruse California Finished Cocktail Table
with Distressed Silver Leaf Metal Accents
W55 D41 H22



3330-765 Cocktail Table

Polished Rosewood Finished Cocktail Table, Nickel Brass Accents
W52 D36 H22
Complements 3230-899



3330-768 Cocktail Table

Distressed Walnut Finished Cocktail Table,
Bamboo Motif, Brown Leather Inlaid Top
W41 D27 H23



3330-772 Cocktail Table

Shanghai Casual Dark Finished Cocktail
Table, Black Marble Top with White Veining
W58 D36 H21



3351-336 Cocktail Table

Light Gold Gilt Finished Scrolled Iron
Cocktail Table with Eglomise Top
W50 D32 H18



3351-337 Cocktail Table

Gold Gilt Finished Scrolled Iron
Cocktail Table with Inset Glass Top
W43 D29 H20



3330-697 Cocktail Table

Hand Painted Black Vendôme Cocktail Table, Eglomise Top, Gold Gilded Accents, Two Drawers each Side
W59 D39 H25



3341-138 Cocktail Table

Woven Rattan Cocktail Table, Decorative Samoan Brass Accents, Glass Top
W48 D48 H23



3330-751 Cocktail Table

Antique Noir Finished Cocktail Table, Grey Embossed Shagreen Leather Inlay Top
W60 D46 H18



3330-761 Cocktail Table

Matte Black Finished Cocktail Table, Gold and Silver Eglomise Black Waxstone, Brass Accents
W60 D41 H19



3343-170 Cocktail Table

Silver Leaf Finished Cocktail Table with Heavily Distressed Mirror Glass Top
W54 D38 H20



3330-595 Cocktail Table

Distressed Walnut Finished Cocktail Table, Spindle Legs, Tooled Veneer Top
W34 D24 H22
Complements 3230-743



3330-602 Cocktail Table

Antique Aubergine and Brown Leather Upholstered Cocktail Table, Copper Etched Finished Brass Top
W44 D39 H20



3330-725 Cocktail Table

Hand Carved Dark Antique Lido Finished Cocktail Table, Tufted Baroque Java Leather Upholstery
W62 D51 H22



3330-742 Cocktail Table

Antique Aubergine Finished Cocktail Table, Gold Accents, Inset Beveled Glass Top
W48 D26 H24



3330-770 Cocktail Table

Shanghai Casual Dark Finished Cocktail Table, Red Leather Inlay with Chinoiserie Top
W38 D24 H21



3330-771 Cocktail Table

Black Cracked Finished Cocktail Table with Brown Undertones
W49 D28 H20



3351-333 Cocktail Table

Rusty Iron Finished Cocktail Table, Vintage Leather Woven Top Over Solid Surface
W54 D43 H23



3320-159 Cocktail Table

Hand Tooled Savanna Brown Leather
Book Cocktail Table with Drawers
W37 D29 H16



3220-212 Storage Trunk

Florentine Leather Finished Canvas Maitland-Smith
Logo Storage Trunk, Antique Brass Accents
W45 D25 H25



3320-221 Cocktail Table

Frontier Finished and Colonial Mottled
Black Leather Cocktail Table with Four
Leather Stools - Hairhide (Brindle)
W44 D44 H22



3320-226 Storage Trunk

Leopard Motif Trunk Cocktail Table,
Black Leather and Exeter Brass Accents
W48 D27 H22



3230-891 Center Table

Black Matte Finished Center Table, Hand Painted Black and Gold Eglomise Decor
W42 D42 H30



3030-587 Center Table

Hand Carved Aged Regency Mahogany Center Table, Brass Accents, Marquetry Top
W42 D42 H33





3030-614 Center Table

Warm Honey Finished Mahogany Center Table,
Pompeian Patina Brass Medallions and Casters
W48 D48 H32



3030-773 Center Table

Warm Honey Burnished Center Table, Intricate
Marquetry, Antique Brass Feet, Four Drawers
W48 D48 H32



3030-616 Center Table

Regency Mahogany Finished Georgian
Center Table, Hand Inlaid Marquetry Top
W41 D41 H30



3630-031 Center Table

Paris Walnut Finished Center Table
with Hand Painted Gold Accents
W53 D53 H32





3630-054 Center Table

Dark French Walnut Finished Center Table, Marquetry Veneer Top, Amalfi Brass Accents
W40 D40 H32



3630-046 Center Table

Mahogany Finished Center Table, Marquetry Veneer Top, Gold Gilded and Brass Accents
W44 D44 H31



3530-090 Center Table

Hyde Park Finished Mahogany Tripod Based Center Table, Mixed Veneer Parquetry Top
W41 D41 H30



3030-853 Center Table

Stenciled Damask Pattern Center Table, European Walnut Veneer; Gilded Accents
W46 D46 H34



3048-210 Center Table

Gold and Silver Gilt Finished Square Center Table, Eglomise Gilt Glass Top
W41 D41 H33



3030-988 Center Table

Natural and Ebony Finished Center Table,
Zebrawood Veneer; Polished Brass Accents
W36 D26 H31



3630-038 Center Table

Antique Aubergine Finished Center Table,
Leopard Print Motif, Inset Glass
W50 D50 H31



3000-053 Center Table

Finely Cast Sherwood Brass and Ash Burl
Veneer Center Table, Snakeskin Stone Top
W46 D46 H33



3030-929 Center Table

Antique Aubergine Finished Center Table, Various
Stone Marquetry Inlay, Gilded Accents
W44 D44 H35



3030-931 Center Table

Natural Finished Round Center Table,
Marquetry Top, Sherwood Brass Accents
W48 D48 H31





3030-994 Center Table

Aged Regency Finished Center Table,
Hand Carved Base, Marquetry Accents
W42 D42 H33
Complements 3430-965



3630-013 Center Table

Alhambra Finished Center Table
with Various Stone Inlay Top
W46 D46 H31



3630-002 Center Table

Glazed Mahogany Finished Center Table,
Rosewood Veneer, Abalone Shell Inlay,
Nickel Brass Accents
W52 D52 H30



3630-041 Center Table

Polished Mahogany Finished Center Table
with Golden Brass Gallery and Accents
W34 D25 H32



3430-824 Console Table

Regency Finished Mahogany Console
Table, Gold Leaf Accents, Marble Top
W54 D20 H35

3430-976 Console Table

Natural Finished Console Table,
Rosewood Veneer, Amalfi Brass
Accents, Two Drawers
W50 D16 H34



3430-977 Console Table

Napoleon Brown Finished
Console Table, Exeter Brass
Accents, One Drawer
W60 D16 H33



3430-848 Console Table

Antique Lido Finished Console Table,
Primavera Veneers, Mactan Stone Top
W78 D21 H37



3430-784 Console Table

Regency Finished Mahogany Neoclassic
Console Table, Crotch Veneer; Fluted Legs
W36 D18 H31



3430-953 Console Table

Corsair Mahogany Finished Console
Table, Antique Gold Gilded Accents
W38 D18 H34
Complements 3030-945



3430-965 Console Table

Aged Regency Finished Console
Table, Marquetry Accents
W52 D15 H32
Complements 3030-994



3430-701 Console Table

Regency Finished Crotch Mahogany
Console Table, Finely Cast Brass
Mounts, Three Drawers
W44 D21 H34



3430-858 Console Table

Hand Carved Aged Regency Finished
Demilune Console Table, Veneered Top
W54 D13 H35



3430-951 Console Table
 Mahogany Finished Console Table
 with Carved Gold Gilded Accents
 W54 D15 H34
 Complements 3030-944



3430-960 Console Table
 Knightsbridge Finish Console Table, Egyptian
 Figures on Post, Sherwood Brass Accents
 W48 D18 H36



3430-968 Console Table
 Paris Walnut Finished Console Table, Black Waxstone Top,
 Grounded Outlet Strip in Drawer; Sherwood Brass Accents
 W44 D16 H34



3431-186 Console Table
 Aged Regency Finished Veneer Console Table, Hand
 Painted Black and Gold Chinoiserie Apron
 W60 D15 H35



3440-021 Console Table
 Crotch Mahogany Late Georgian Console Table,
 Antique Gold Metal Leaf Accents, Two Drawers
 W53 D15 H32



3443-252 Console Table
 Black Finished Console Table with Gold Gilt Accents
 W48 D12 H32



HENRIETTA SPENCER-CHURCHILL COLLECTION



3430-842 Console Table

Aged Regency Finished Mahogany Sheraton Sofa Table, Crotch Veneers, Tapered Legs, One Drawer
W49 D14 H35



3430-855 Console Table

Aged Regency Finished Adam Console Table, Florentine Finished Leather Top
W49 D13 H33



3430-869 Console Table

Aged Regency Finished Mahogany Console Table, Veneered Apron, Fluted Legs, Three Drawers
W55 D14 H35



3430-948 Console Table

Estate Walnut Finished Console Table, Black Waxstone Top, Carved and Amber Brass Accents
W55 D21 H32



3431-116 Console Table

Hand Carved Mahogany Adam Console Table with Sienna Leather Top
W60 D20 H32



3440-028 Console Table

Mahogany Regency Serpentine Console Table, Finely Cast Brass Mounts
W40 D19 H34



3451-342 Console Table

Textured Verdigris Finished Iron Console Table, Etched Cork Stone Top
W72 D18 H38



3451-345 Console Table

Black Iron Coral Motif Console Table, Green Stone Base, Brass Accents, Beveled Glass Top
W49 D14 H37



3430-970 Console Table

Black Crackled Finished Console Table with Brown Undertones
W72 D18 H36



3430-910 Console Table

Natural Finished Contemporary Rosewood Console Table, Cream Colored Faux Shagreen Inlay, Two Drawers
W68 D22 H36



3430-887 Console Table

French Polished Ebony Zebrano Veneer Console Table, Brushed Satina Brass Accents, Single Drawer
W57 D13 H35



3451-346 Buffet Table

Petrified Wood Stone and Black Iron Buffet Table, Antique Brass Accents
W110 D24 H38



3451-347 Console Table

Two Tiered Burnished Gold Finished Iron Console Table, Black Waxstone Top and Base
W57 D19 H34



3430-830 Console Table

Aged Regency Mahogany Console Table,
Marquetry Detail, Black and White Stringing
W51 D21 H34



3430-838 Console Table

Hunt Club Finished Mahogany Console Table,
Verdigris Patina Brass Mounts, Nine Drawers
W34 D10 H42



3430-844 Console Table

Aged Regency Mahogany Finished Console Table, Crotch
Veneers, Dark Antique Brass Accents, One Drawer
W60 D16 H34



3430-860 Console Table

Hand Carved Aged Regency Finished Mahogany
Console Table, Brass Accents, Veneer Top, Three Drawers
W52 D13 H34



3430-863 Console Table

Aged Regency Finished Crotch Veneer Console
Table, Crumpled Faded Leather Inlaid Top
W52 D13 H34



3448-119 Console Table

Carved Light Tone Finished Console
Table, Golden Galaxy Stone Top
W74 D22 H35



3430-876 Console Table

Hand Carved Dark Antique Lido Console Table, Aluminum Stretcher; Leather Detail
W64 D18 H39



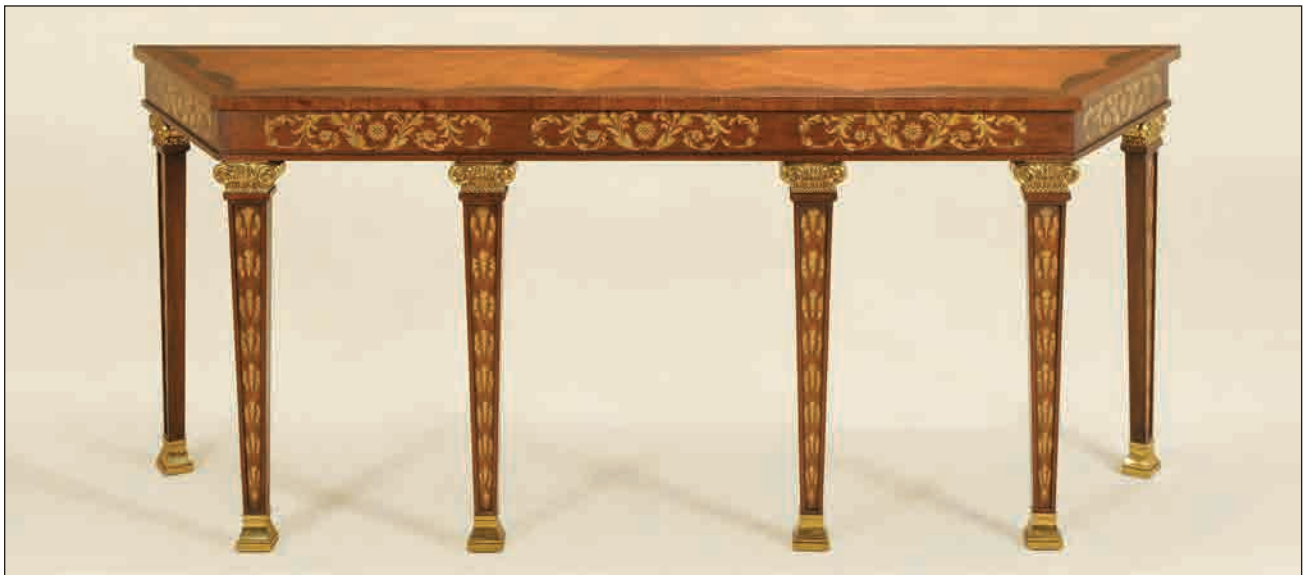
3430-980 Console Table

Positano Finished Console Table, Distressed Leather Top, Brass Tack Accents
W64 D20 H37



3430-861 Console Table

Dark Antique Lido and Santa Fe Finished Console Table, Oak Veneers, Leather Top, Nail Trim Detail Around Perimeter; Three Drawers
W64 D24 H35



3430-974 Console Table

Natural Antique Finished Console Table, Marquetry and Golden Brass Accents
W80 D18 H35



3430-979 Console Table

Island Kelobra Finish Storage Console, White Agate
Top, Samoan Brass Accents, Two Drawers, One
Adjustable Shelf Behind Doors
W68 D21 H36
Complements 3530-320

CABINETRY





3247-003 Night Stand
Mirror Glass Inlaid Night Stand,
Nickel-plated Brass Hardware
W28 D20 H28



5130-399 Chest
Faux Ebony Finished Chest of Drawers,
Mirror Inlay, Nickel Plated Brass Accents
W42 D16 H36





5030-293 Chest

Dark Tone Finished Rosewood and Walnut
Burl Chest of Drawers, Brass Ring Accents
W45 D21 H35



5030-056 Chest

Regency Finished Mahogany Diminutive
Chest of Drawers, Finely Cast Brass Accents
W30 D18 H37



5030-353 Chest

London Mahogany Finished Chest
of Drawers with Black Waxstone
Inlay Top, Four Drawers
W48 D23 H36




5020-196 Chest

Safari Brown Finished Chest of Drawers,
Vintage Leather Inlay, Colonial Brass Accents
W54 D22 H35



5030-200 Chest
Aged Regency Finished Mahogany Chest of
Drawers, Marquetry Decoration, Pompeian Brass
W33 D17 H30



5030-347 Chest
Knightsbridge Finished Chest of
Drawers, Amber Brass Accents 
W28 D18 H30



5030-351 Chest
Paris Walnut Finished Chest of
Drawers, Sherwood Brass Accents
W44 D21 H36



5030-202 Night Stand
Aged Regency Finished Primavera
Veneer Night Stand, Verdigris Brass
W31 D22 H31



5043-215 Chest
Napoleon Brown Finished Bedside
Chest, Hand Painted Luggage Motif,
Brass Accents, Charging Station
W32 D22 H29



5030-346 Chest

Chelsea Mahogany Finished Chest of Drawers, Amber Brass Accents
W38 D22 H35



5030-350 Chest

London Mahogany Finished Chest on Stand, Marquetry and Amber Brass Accents, Two Drawers and Pull Out
W25 D21 H27



5020-182 Chest

Padded Old Attic Leather Chest of Drawers, Nailhead Detail, Dark Antique Brass Accents
W40 D22 H36



5030-360 Chest

Black Lacquer and Polished Mahogany Finished Chest of Drawers, Black Waxstone Top, Brass Accents
W50 D24 H41



5030-352 Chest

Mocha Zebrano Finished Chest of Drawers, Heavily Antiqued Mirror Glass, Antique Nickel Brass Accents
W31 D22 H34



5030-339 Chest

Aged Regency Finished Chest of Drawers, Embossed Chocolate Leather Inlay, Brass Accents
W41 D23 H36



HENRIETTA SPENCER-CHURCHILL COLLECTION



5030-294 Chest

Napoleon Brown Finish Jewelry Chest of Drawers, Mother of Pearl Inlay Marquetry, Four Drawers, Three Lined for Jewelry
W25 D19 H44



5030-330 Chest

Natural Finished Chest of Drawers, Laser Cut Branch & Bird Motif, Black Waxstone Top
W53 D23 H35



5030-331 Chest

Homestead Finished Crotch Mahogany Chest of Drawers, Carved Gilded & Brass Accents
W51 D20 H35



5143-210 Chest

Hand Painted Red Ground Chinoiserie Chest of Drawers, Dark Snakeskin Stone Top
W50 D20 H35



5030-343 Chest

Black Lacquer Finished Chest of Drawers, Silver Embossed Croc Leather, Nickel Accents
W49 D22 H37



5043-219 Chest

Antique Gustavian and Light Walnut Finished Chest of Drawers, Brass Pulls
W48 D22 H37



5130-299 Chiffonier

Regency Finished Mahogany Chiffonier; Tapered Leg, Crotch Veneer, Satinwood Inlay, One Adjustable Shelf Behind Locking Doors
W32 D19 H32



5130-361 Chiffonier

Aged Regency Finished Veneered Bowfront Chiffonier; Marquetry Detail, Pompeian Brass Accents, One Adjustable Shelf Behind Locking Doors
W40 D20 H36



5130-605 Chiffonier

Rubbed Walnut Finished Chiffonier; Marquetry Decor, Silver Brass Accents, One Adjustable Shelf Behind Door
W24 D17 H36



5130-310 Chiffonier

Westover Finished Mahogany Crotch
Veneer Chiffonier; Black Stone Top
W53 D18 H35



5143-239 Chiffonier

Rosewood Chiffonier with Antique Gold Gilding and Black Chinoiserie
Motif, Adjustable Shelf behind Locking Door; Brass Gallery
W56 D17 H37



5130-447 Sideboard

Dark Antique Lido Finished Sideboard, Dark
Antique Brass Door Fronts, Leather Top
W71 D20 H42



5130-597 Chiffonier

Dark Walnut and Ebony Finished Chiffonier; Black Waxstone Top, Nickel
Plated Brass, Two Adjustable Shelves behind each Outside Door; Three
Drawers behind Center Door
W75 D21 H34



5130-620 Chiffonier

Mahogany Finished Chiffonier; Black Waxstone
Top, Gold Gilding on Hand Carved Accents, One
Adjustable Shelf Behind each of Three Doors
W67 D24 H38 Complements 3530-318





5330-622 Bookcase

Hand Carved Aged Regency and Black Vendome
Finished Bookcase, Gilded Accents
W40 D18 H49



5330-629 Étagère

Knightsbridge Finished Étagère, Sherwood Brass Accents
W51 D17 H54



5330-625 Étagère

Mocha Zebrano and Black
Lacquer Finished Étagère,
Polished Stainless Steel Accents
W50 D21 H85



5130-594 Display
 Rubbed Walnut Finished Display Cabinet,
 Silver Gilded Interior; Glass Shelves
 W35 D20 H80



5131-031 Display
 Hand Carved Mahogany Display
 Cabinet with Glazed Doors
 W16 D11 H71



5330-632 Bookcase
 London Mahogany Finished Bookcase,
 Antique Brass Accents, One Drawer
 W29 D19 H68



5330-577 Bookcase
 Aged Regency Finished Carved
 Open Bookcase, Scrolled Details
 W98 D15 H54



5330-616 Bookcase

Napoleon Brown Finished Lighted Bookcase with Ladder; Crotch Mahogany Veneer; Brass Accents, One Adjustable Shelf behind each Lower Door; Center Shelves are Adjustable Wood Frames with Glass Inserts, Behind each Glass End Door are Three Adjustable Glass Shelves
WI58 D23 H110



DINING





4030-596



4130-596

3530-155 Dining Table

80" without leaves: two 20" leaves
Distressed Aged Regency Finished
Mahogany Two Pedestal Dining Table
W120 D44 H30



3531-080 Dining Table

77" without leaves: two 20" leaves
Antique Mahogany Finished Veneer Dining
Table, Black and Gold Chinoiserie Painting
W117 D46 H30



4030-639



4130-639



4031-005



4131-006



5130-607

3530-282 Dining Table

77" without leaves: three 20" leaves

Mahogany Finished Double Pedestal Dining Table with Carved Gilded Accents
W137 D47 H31

Also Available in Wider Size:

3530-306 Dining Table

77" without leaves: three 20" leaves

Rubbed Mahogany Finished Dining Table, Carved Gold Gilded Accents
W137 D54 H31





▲ 3530-208 Dining Table

90" without leaves: one 21" leaf

Mahogany Finished Crotch Mahogany Veneer
Dining Table, Crossbanding Top, Brass Mounts
W111 D48 H30

▼ 3530-301 Dining Table

76" without leaves: two 22" leaves

Knightsbridge Finished Dining
Table, Hand Carved Post
W120 D48 H31





▲ 3530-304 Dining Table

78" without leaves: two 24" leaves

Cordoba Finished Dining Table, Walnut Veneer;
Marquetry Accents, Hand Carved Base
W126 D44 H31

▼ 3530-065 Dining Table

80" without leaves: two 20" leaves

Regency Finished Mahogany Double
Pedestal Dining Table, Brass Casters
W120 D44 H30



4030-300

4130-300



4031-184



4131-184

▲ 3531-073 Dining Table

82" without leaves: two 20" leaves

Hand Carved Mahogany Dining Table, Crotch

Veneer Top, Bleach Mahogany Banding

W122 D48 H31

▼ 3530-284 Dining Table

94" without leaves: one 22" leaf extender

Spanish Galleon Finished Plank Top

Dining Table, Self Storing

W116 D42 H31



4030-787



4130-787



5130-597



4030-796



4130-796



3530-305 Dining Table

74" without leaves; two 20" leaves

Dark Walnut Finished Dining Table,
Marquetry and Nickel Brass Accents

W114 D46 H30

Complements 5130-597





▲ 3530-158 Dining Table

64" diameter; five 12" leaf extenders

Aged Regency Finished Expandable Dining Table, Crotch Veneer; Brass Accents
W88 D88 H30

▼ 3530-166 Dining Table

Aged Regency Finished Mahogany Dining Table, Laurel Burl Finished Veneer Top
W45 D45 H30





4030-624

4130-624

3530-207 Dining Table

Dark Antique Lido Finished Dining Table, Marquetry Planked Top
W60 D60 H30



\$C



3530-302 Dining Table

56" diameter without leaf; one 22" leaf
Chelsea Mahogany Finished Dining Table, Hand Carved Post
W78 D56 H31



4030-790



4130-790



3530-309 Dining Table

Elegant Dark Walnut Finished Round Dining Table with Vintage Silver Brass Accents
W50 D50 H30

\$C

HENRIETTA SPENCER-CHURCHILL COLLECTION



3530-303 Dining Table

Alhambra Finished Round Dining Table, Rosewood Veneer Inlay, Hand Carved Cadiz Finished Base and Apron
W60 D60 H30



4030-793



4130-793



3530-199 Dining Table

Dark Antique Lido Finished Plank Top Dining Table, Mahogany Marquetry Veneer Top
W90 D46 H30



4030-621



4130-621



4030-724



4130-724



5130-447

3530-245 Dining Table

100" without leaves, three 22" leaves
Dark Wellington Cottage Finished Dining
Table, Iron and Snakeskin Stone Accents
W166 D52 H31



4030-787



4130-787



3530-312 Dining Table

92" without leaves, two 26" leaves
Distressed Terra Nullius Finished
Dining Table, Parquetry Accents
W144 D46 H30



3530-317 Dining Table

Positano Finished Metamorphic
Dining Table, Marquetry Accents
W77 D77 H30
W61 D31 H30 Closed



3530-308 Dining Table

Knightsbridge Finished Round Dining
Table with Marquetry Accents
W60 D60 H30



5130-620

3530-318 Dining Table
104" without leaves, two 21" leaves
 Mahogany Finished Dining Table,
 Hand Carved Bolshoi Gold
 Accents, 2x21" Extenders
 W146 D53 H31
 Complements 5130-620



4230-651





▲ 3530-299 Dining Table

London Mahogany Finished Bistro Dining Table
W38 D38 H43

▼ 3530-300 Dining Table

Safari Brown Finished Bistro Dining Table,
Burnished Copper Finished Brass Top
W40 D40 H43





4241-148

3530-320 Bistro Table

Island Kelobra Finished Bistro Table,
Marquetry and Samoan Brass Accents
W34 D34 H42
Complements 3430-979



4230-410

3530-310 Bistro Table

Hand carved Corsair Mahogany Finished Bistro
Table, Black Leather Inlay Top with Tooling
W38 D38 H43



4230-401

3530-311 Bistro Table

Mahogany Finished Bistro Table, Gold Gilt and
Black Lacquer Accents, Black Leather Top
W38 D38 H42





4030-300

Seat Height: 20"
Regency Finished Mahogany
Chippendale Straight Leg Side
Chair; Neutral Upholstery
W23 D23 H39



4130-300

Seat Height: 20" Arm Height: 28"
Regency Finished Mahogany
Chippendale Straight Leg
Armchair; Neutral Upholstery
W25 D23 H39



4030-596

Seat Height: 21"
Carved Aged Regency Finished
Mahogany Chippendale Side
Chair; Woven Caramel Fabric
W23 D23 H39



4130-596

Seat Height: 21" Arm Height: 28"
Carved Aged Regency Finished
Mahogany Chippendale Armchair;
Woven Caramel Fabric
W25 D23 H39



4030-597

Seat Height: 21"
Carved Aged Regency Finished
Mahogany Chippendale Straight
Leg Side Chair; Caramel Fabric
W22 D21 H41



4130-597

Seat Height: 21" Arm Height: 27"
Carved Aged Regency Finished
Mahogany Chippendale Straight
Leg Armchair; Caramel Fabric
W27 D21 H41



4031-059

Seat Height: 20"
Carved Polished Mahogany
Chippendale Straight Leg Side
Chair; Neutral Fabric Upholstery
W23 D23 H39



4131-059

Seat Height: 20" Arm Height: 27 1/2"
Carved Polished Mahogany
Chippendale Straight Leg
Armchair; Neutral Fabric Upholstery
W25 D23 H39



4031-187

Seat Height: 21"
Carved Polished Mahogany
Chippendale Straight Leg Side
Chair; Neutral Fabric Upholstery
W22 D21 H41



4131-187

Seat Height: 21" Arm Height: 27"
Carved Polished Mahogany
Chippendale Straight Leg
Armchair; Neutral Fabric Upholstery
W23 D21 H41



4030-599

Seat Height: 20"
Carved Aged Regency Finished
Mahogany Chippendale Side
Chair; Woven Caramel Fabric
W24 D25 H43



4130-599

Seat Height: 20" Arm Height: 27 1/4"
Carved Aged Regency Finished
Mahogany Chippendale Armchair;
Woven Caramel Fabric
W26 D25 H43



4030-655

Seat Height: 20"

Hand Carved Polished Mahogany
Finished Heart Shaped Shield Back
Side Chair; Oyster Silk Upholstery
W23 D25 H41



4130-655

Seat Height: 20" Arm Height: 26 1/8"

Hand Carved Polished Mahogany
Finished Heart Shaped Shield Back
Armchair; Oyster Silk Upholstery
W26 D25 H41



4031-005

Seat Height: 20"

Carved Polished Mahogany
Chippendale Side Chair; Cabriole
Leg, Neutral Fabric Upholstery
W25 D24 H41



4131-006

Seat Height: 20" Arm Height: 28"

Carved Polished Mahogany
Chippendale Armchair; Cabriole
Leg, Neutral Fabric Upholstery
W26 D24 H41



4031-184

Seat Height: 20"

Carved Polished Mahogany
Hepplewhite Shield Back Side
Chair; Neutral Fabric Upholstery
W23 D21 H39



4131-184

Seat Height: 20" Arm Height: 27 3/4"

Carved Polished Mahogany
Hepplewhite Shield Back Armchair;
Neutral Fabric Upholstery
W23 D21 H39



4030-639

Seat Height: 20"

Antique Mahogany and Black
Chinoiserie Finished Side Chair;
Neutral Fabric Upholstery
W22 D27 H41



4130-639

Seat Height: 20" Arm Height: 25"

Antique Mahogany and Black
Chinoiserie Finished Armchair;
Neutral Fabric Upholstery
W24 D27 H41



4030-763

Seat Height: 20"

Renaissance White Finished Side
Chair with Aegean Blue Silk
Upholstery; Gilded Accents
W20 D25 H37



4130-763

Seat Height: 20" Arm Height: 25"

Renaissance White Finished
Armchair with Aegean Blue
Silk Upholstery; Gilded Accents
W22 D25 H37



4031-268

Seat Height: 20"

Carved Polished Mahogany
Chippendale Side Chair; Cabriole
Leg, Neutral Fabric Upholstery
W26 D25 H41



4131-268

Seat Height: 20" Arm Height: 26"

Carved Polished Mahogany
Chippendale Armchair; Cabriole
Leg, Neutral Fabric Upholstery
W26 D25 H41



4030-791

Seat Height: 21"
Knightsbridge Finished Side Chair,
Snow Fabric Upholstery
W23 D29 H44



4130-791

Seat Height: 21" Arm Height: 26 1/2"
Knightsbridge Finished Armchair,
Snow Fabric Upholstery
W23 D29 H44



4030-793

Seat Height: 20"
Cadiz Finished Side Chair, Caramel
Fabric Upholstery
W23 D21 H40



4130-793

Seat Height: 20" Arm Height: 26"
Cadiz Finished Armchair, Caramel
Fabric Upholstery
W23 D21 H40



4030-796

Seat Height: 20"
Dark Walnut Finished Side Chair,
Gray Mist Fabric Upholstery,
Antiqued Brass Accents
W21 D26 H39



4130-796

Seat Height: 20" Arm Height: 25 1/4"
Dark Walnut Finished Armchair,
Gray Mist Fabric Upholstery,
Antiqued Brass Accents
W24 D26 H39



4030-790

Seat Height: 21"
Chelsea Mahogany Finished Side
Chair, Celso Fabric Upholstery
W22 D25 H40



4130-790

Seat Height: 21" Arm Height: 26"
Chelsea Mahogany Finished
Armchair, Celso Fabric Upholstery
W24 D25 H40



4143-125

Seat Height: 20" Arm Height: 26 1/2"
Rubbed Black Lacquer Finished Armchair,
Gilded Gold Accents, Taupe Velvet Upholstery
W27 D26 H35



4030-624

Seat Height: 20"
Hand Carved Dark Antique
Lido Finished Side Chair, Leather
Upholstery, Brass Nailhead Accents
W23 D27 H50



4130-624

Seat Height: 20" Arm Height: 25"
Hand Carved Dark Antique
Lido Finished Armchair, Leather
Upholstery, Brass Nailhead Accents
W26 D27 H50



4030-724

Seat Height: 22"
Dark Antique Lido Finished
Side Chair; Ragtime Leather
and Paisley Upholstery
W24 D28 H48



4130-724

Seat Height: 22" Arm Height: 26"
Dark Antique Lido Finished
Armchair; Ragtime Leather
and Paisley Upholstery
W27 D28 H49



4030-621

Seat Height: 20"
Hand Carved Frontier
Finished Side Chair; Rust
Patterned Velvet Upholstery
W25 D28 H48



4130-621

Seat Height: 20" Arm Height: 25"
Hand Carved Frontier
Finished Armchair; Rust
Patterned Velvet Upholstery
W28 D28 H48



4030-745

Seat Height: 21"
Dark Wellington Cottage
Finished Side Chair; Leather and
Herringbone Fabric Upholstery
W25 D24 H49



4130-745

Seat Height: 21" Arm Height: 26 1/2"
Dark Wellington Cottage
Finished Armchair; Leather and
Herringbone Fabric Upholstery
W29 D26 H49



4030-778

Seat Height: 20"
Italian Walnut Finished Side Chair; Chocolate
Leather and Brindle Hair Hide Upholstery
W22 D28 H43



4030-746

Seat Height: 20"
Charleston Mahogany Finished
Side Chair; Flax Linen Upholstery,
Ribbon and Brass Tacks Accents
W24 D28 H43



4130-746

Seat Height: 20" Arm Height: 25"
Charleston Mahogany Finished
Armchair; Flax Linen Upholstery,
Ribbon and Brass Tacks Accents
W28 D31 H43



4030-756

Seat Height: 21"
Charleston Mahogany Finished
Side Chair; Tufted Regina Silk
Upholstery, Velvet Buttons
W23 D23 H34



4330-603

Seat Height: 19"
Ebony Finished Occasional Chair;
Sterling Silver Silk Upholstery
W24 D22 H32



4030-641

Seat Height: 21"
Hand Carved Dark Antique Lido
Finished Mahogany Side Chair;
Leather Upholstery
W22 D23 H48



4130-641

Seat Height: 21" Arm Height: 24 1/4"
Hand Carved Dark Antique Lido
Finished Mahogany Armchair;
Leather Upholstery
W25 D23 H48



4130-799

Seat Height: 21"
Renaissance White Finished
Rattan Armchair with Gold
Accents, Gold Velvet Upholstery
W24 D24 H37



4030-645

Seat Height: 20"
Dark Antique Lido Finished
Side Chair, Brompton Brown
Leather, Oval Pattern
W24 D27 H50



4130-645

Seat Height: 20" Arm Height: 25"
Dark Antique Lido Finished
Armchair, Brompton Brown
Leather, Oval Pattern
W25 D27 H50



4030-730

Seat Height: 21"
Dark Wellington Cottage Finished
Side Chair, Leather and Paisley
Fabric Upholstery
W24 D29 H48



4130-730

Seat Height: 21" Arm Height: 27"
Dark Wellington Cottage Finished
Armchair, Leather and Paisley
Fabric Upholstery
W26 D29 H48



4030-731

Seat Height: 20"
Dark Wellington Cottage Finished
Side Chair; Abaca Rope Rush Seat
W21 D25 H40



4130-731

Seat Height: 20" Arm Height: 26"
Dark Wellington Cottage Finished
Armchair; Abaca Rope Rush Seat
W23 D24 H40



4030-787

Seat Height: 21"
Safari Brown Finished Side
Chair; Old Attic Leather
Upholstery; Brass Tack Accents
W22 D26 H41



4130-787

Seat Height: 21" Arm Height: 25"
Safari Brown Finished Armchair;
Old Attic Leather Upholstery;
Brass Tack Accents
W25 D26 H41



4030-797

Seat Height: 21"
Safari Brown Finished Side Chair;
Buckhurst Fabric Upholstery
W22 D26 H41



4130-797

Seat Height: 21" Arm Height: 25"
Safari Brown Finished Armchair;
Buckhurst Fabric Upholstery
W25 D26 H41



4030-794

Seat Height: 21"
Cordoba Finished Side Chair;
Posh Latte Fabric Upholstery
W21 D27 H44



4130-794

Seat Height: 21" Arm Height: 27"
Cordoba Finished Armchair;
Posh Latte Fabric Upholstery
W26 D27 H44



4041-161

Seat Height: 21"
Dark Brown Finished Rattan
Dining Chair; Micro Suede
Upholstery; Brass Accents
W26 D29 H47





4330-600

Seat Height: 19"

Aged Regency Mahogany Armchair
with Briarwood Brown Leather
Upholstery, Pompeian Brass Accents
W25 D28 H40



4030-559

Seat Height: 19"

Umber Finished Mahogany
Ladderback Side Chair;
Abaca Rope Rush Seat
W22 D23 H43



4130-559

Seat Height: 19" Arm Height: 24 3/4"

Umber Finished Mahogany
Ladderback Armchair, Abaca
Rope Rush Seat
W24 D23 H43



4230-372

Seat Height: 26"

Avignon Cottage Finished Counter
Stool with Abaca Rope Rush Seat,
Brass Foot Rest
W21 D23 H37



4230-602

Seat Height: 31" Arm Height: 37"

Antique Aubergine Finished
Swivel Barstool, Black Leather
Seat, Brushed Satina Accents
W24 D24 H45



4230-601

Seat Height: 31" Arm Height: 36"
Hunt Club Mahogany and Brown Leather Deep Button Upholstered Swivel Barstool
W21 D24 H42



4230-320

Seat Height: 31" Arm Height: 36"
Napoleon Brown Finished Barstool, Gemini Oak Leather Upholstery, Brass Accents
W28 D28 H47

4430-320

Seat Height: 26" Arm Height: 32 1/2"
Napoleon Brown Finished Counter Stool, Gemini Oak Leather Upholstery, Brass Accents
W28 D28 H40

Available as barstool and counter stool.



4230-226

Seat Height: 31" Arm Height: 37"
Dark Antique Lido Finished Mahogany Barstool, Old Attic Leather Upholstery
W23 D26 H45

4430-226

Seat Height: 26" Arm Height: 31 1/2"
Dark Antique Lido Finished Mahogany Counter Stool, Old Attic Leather Upholstery
W23 D26 H38



4230-609

Seat Height: 31" Arm Height: 37 1/2"
Aged Regency Mahogany Finished Swivel Barstool, Uganda Crocodile Embossed Leather
W24 D24 H45

4430-609

Seat Height: 26" Arm Height: 32 1/2"
Aged Regency Mahogany Finished Swivel Counter Stool, Uganda Crocodile Embossed Leather
W24 D25 H38

Available as barstool and counter stool.



4230-644

Seat Height: 31" Arm Height: 36 1/2"
Frontier Finished Mahogany Swivel Barstool, Deep Button Red Brown Leather Upholstery
W23 D27 H44

4430-644

Seat Height: 26" Arm Height: 31 1/4"
Frontier Finished Mahogany Swivel Counter Stool, Red Brown Leather Upholstery
W23 D27 H39

Available as barstool and counter stool.



4230-651

Seat Height: 31" Arm Height: 38"
Aged Regency Finished Mahogany Swivel Barstool, Venetian Regal Leather Upholstery
W26 D30 H43

4430-651

Seat Height: 26" Arm Height: 33 1/2"
Aged Regency Finished Mahogany Swivel Counter Stool, Venetian Regal Leather Upholstery
W26 D30 H38

Available as barstool and counter stool.



4230-224

Seat Height: 31" Arm Height: 37 1/4"
Mahogany Finished Barstool,
Lions Head Motif, Bentley
Chocolate Leather Upholstery
W24 D24 H44



4230-250

Seat Height: 31" Arm Height: 35 3/4"
Spanish Antique Mahogany
Finished Swivel Barstool, Old
Attic Leather Upholstery
W24 D24 H46



4230-343

Seat Height: 31" Arm Height: 36"
Carved Dark Wellington
Cottage Finished Barstool,
Kodiak Leather Upholstery
W25 D24 H49



4230-346

Seat Height: 30" Arm Height: 36"
Dark Antique Lido Finished
Barstool, Ragtime Leather
and Paisley Upholstery
W26 D28 H50



4230-398

Seat Height: 31"
London Mahogany Finished
Barstool, Mocha Fabric Upholstery
Champagne Silver Brass Accents
W24 D24 H45



4230-401

Seat Height: 31"
London Mahogany Finished
Barstool, Black Nottingham
Leather Upholstery, Brass Accents
W24 D24 H45



4230-402

Seat Height: 31"
Alhambra Finished Barstool,
Monarch Gator Leather
Upholstery, Brass Tack Accents
W20 D23 H49



4230-410

Seat Height: 31"
Corsair Mahogany Finished Barstool
with Black Leather Upholstery
W22 D25 H47



4230-555

Seat Height: 32"
Lido Finished Mahogany
Barstool, Brown Leather
Upholstery, Brass Footrest
W24 D34 H45



4230-614

Seat Height: 32" Arm Height: 37"
Aged Regency Finished Barstool
with Cue Holder, Nailhead Trim
and Frassimo Embossed Leather
W23 D29 H47



4241-148

Seat Height: 31"
Oceania Finished Rattan Swivel
Barstool, Pebble Fabric Upholstery,
Samoan Brass Accents
W19 D20 H42

**4230-258 Double Bench**

Aubergine Finished Double Pool Bench With
Cue Holders, Black Leather Upholstery
W52 D32 H48



4230-412 Barstool

Seat Height: 31"

Aged Regency Finished Barstool, Charcoal
Grey Fabric Upholstery, Brass Stretcher
W23 D24 H45

5130-619 Sideboard

Knightsbridge Finished Sideboard,
Amber Brass Accents, Top Drawer has
Silver Liner, Two Doors Open for Storage
W74 D23 H37



SC



5130-297 Sideboard

Regency Finished Mahogany Georgian Bowfront
Sideboard, Crotch Veneers, Fine Stringing
W60 D27 H37



5130-607 Sideboard

Rubbed Mahogany Finished Buffet with Carved Gold Gilded Accents. Center top drawer has silver liner.
One adjustable shelf behind center doors, One adjustable shelf behind lower left and right doors.
W84 D26 H38 Complements 3530-282 and 3530-306



5130-437 Sideboard

Mahogany Finished Tulip and Crotch Veneer
Sideboard, Dark Antique Patina Brass Accents,
Six Center Drawers, Two have Silver Liners,
One Shelf behind Side Doors
W84 D24 H43



5130-575 Buffet

Southern Rosewood Finished Buffet, Black Waxstone Top on Pullout, Amber Brass Accents, Behind Hinged Top are Grounded Outlets, Data, Phone and USB Connections
W46 D33 H41



5130-597 Sideboard

Dark Walnut and Ebony Finished Chiffonier; Black Waxstone Top, Nickel Plated Brass, Two Adjustable Shelves Behind Each End Door; Three Drawers Behind Center Doors.
W75 D21 H34 Complements 3530-305



5130-620 Chifffoniere

Mahogany Finished Chifffoniere, Black Waxstone Top, Gold Gilding on Hand Carved Accents, Three Drawers and One Adjustable Shelf behind Three Lower Doors
W67 D24 H38



5130-447 Sideboard

Dark Antique Lido Finished Sideboard, Dark Antique Brass Door Fronts, Leather Top
W71 D20 H42



5130-593 Sideboard

Safari Brown Finished Sideboard, Mactan Stone Top, Rustic Iron and Brass Accents. Second of Four Drawers has Cutlery Liner. There is One Adjustable Shelf Behind Lower Side Doors. W76 D19 H41



3630-030 Server

Light Tone Finish Mahogany Server, Reverse Painted Gold Leaf Mirror Top, Clear Inset Glass Shelves W52 D20 H37



3630-034 Server

Shanghai Casual Dark Finished Server; Antiqued Mirror Top, Clear Inset Glass Shelf
W53 D20 H38



3030-694 Server

Antique and Polished Mahogany Serving Cart, Crotch Mahogany Veneered Top and Shelves, Brass Mounts
W45 D18 H33



3630-102 Server

Ambassador Leather Inlay Serving Cart
with Gold Tooling Accents, Mirror Glass Top
W45 D18 H33



3630-007 Server

Glazed Mahogany Finished Bar Cart, Black Eglomise Top, Nickel Finished Brass Accents
W38 D18 H30



5330-628 Server

Amber Finished Brass Serving Cart, Antique Brown Crocodile Embossed Leather Shelves
W33 D18 H31

**5740-011 Cabinet**

Light Crotch Mahogany Lighted Breakfront
China Cabinet, Glass Shelves, Brass Mounts,
Three Drawers, One Adjustable Shelf
Behind Three Locking Doors
W64 D18 H93



5731-102 Cabinet

Mahogany Breakfront Lighted China Cabinet,
Glass Shelves, Light Antique Brass Mounts, One
Adjustable Shelf behind each of Four Lower Doors
W82 D20 H85



5130-383 Corner Cabinet

Aged Regency Mahogany Finished Corner Cabinet, Crotch Veneer; Regency Brass, Cabinet Base, Glass Shelves, One Adjustable Shelf behind Doors
W45 D23 H84



5740-006 Cabinet

Light Mahogany Georgian Lighted
Triple Breakfront China Cabinet,
Glass Shelves
W101 D19 H95





5330-626 Display Cabinet

Knightsbridge Finished Lighted Display Cabinet, Hand Carved Gold Accents. Two Wood Framed Inset Glass Shelves are at Center of Cabinet. Two Wood Framed Inset Glass Shelves are Behind the Locking Doors on Both Sides of the Cabinet. One Adjustable Shelf is Behind the Locking Lower Doors. W116 D23 H93





5130-602 China Cabinet

Cordoba Finished Lighted China Cabinet, Three
Wood Framed Glass Shelves, Old Brass Accents,
Two Side Doors with Adjustable Shelves
W90 D23 H93

HOME OFFICE





5530-325 Desk

Antiqued Natural Finished Desk in Rosewood Veneer; White Lined and Nickel Brass Accents. Center Drop-Down Drawer; Two Drawers Left and Right, Left Pedestal has Two Adjustable Shelves Behind Door. Right Pedestal has Two Drawers Behind Door (one is File Drawer). Visitor Side has Two Adjustable Shelves Behind Right Pedestal Door. W72 D31 H32





4330-762

▲ 5530-266 Partners' Desk

Aged Regency Finished Walnut Burl Veneer Partners' Desk, Old Chair Leather Inlaid Top, For Both User and Visitor Sides Center Drawer Folds Down, Two Drawers on Right, Lower Drawer is a File Drawer; One Drawer on Left, One Lower Locking Door with Adjustable Shelf W71 D45 H29

▼ 5530-171 Partners' Desk

Regency Finished Mahogany Serpentine Partners' Desk with Sussex Leather Top W65 D35 H30



4330-772



5530-261 Desk

Dark Burnished Laurel Burl and Crotch
Veneer Desk, Leather Top, Brass Accents
W73 D40 H30



4330-708



4340-100

▲ 5530-254 Writing Desk

Aged Regency Mahogany Finished Writing Desk, Tooled Florentine Leather Top
W65 D28 H31

▼ 5530-283 Writing Desk

Faux Ebony Finished Zebrano Veneer Writing Desk with Faux Beige Ostrich Inlaid Leather
W64 D32 H32



4330-603



4330-762

▲ 5530-288 Writing Desk

Aged Regency Finished Desk, Intricate Inlaid Marquetry Top in Various Veneers, Three Drawers with Center Drop Down, Two Corner Drawers, One Side Drawer Contains Three Grounded Outlet Strip
W73 D39 H31

▼ 5530-328 Writing Desk

Chelsea Mahogany Finished Writing Desk, Renaissance White Leather, Brass Accents, Three Drawers
W54 D24 H30



HENRIETTA SPENCER-CHURCHILL COLLECTION



4330-636

▲ 5530-248 Writing Desk

Ash Burl Veneer and Aubergine Finished Writing Desk, Leather Top, Brass Mounts, Center Drawer with Flip Down, Two Small Drawers Each End. Top is Gold Tooled Leather and Ash Burl Veneer with Blind Tooling
W60 D31 H31

▼ 5530-315 Writing Desk

Carved Spanish Galleon Finished Writing Desk, Pecky Pecan Veneer, Plain Back
W60 D31 H31





5530-206 Writing Table

Chartwell Finished Mahogany Georgian Writing Table, Black Leather Top, Brass Accents
W62 D36 H30



5530-197 Writing Table

Regency Finished Mahogany Writing Table, Inlaid Black Leather Top, Brass Mounts
W58 D35 H30



5530-333 Writing Desk

Shanghai Red Lacquer Finished Desk, Black Leather Inlay, Antique Brass Accents, Center Drawer has Drop-Down, Two Side Drawers, Faux Drawers Visitors Side, Custom Pagoda Pulls
W59 D27 H31



5530-335 Writing Desk

Mocha Zebrano Finished Oval Writing Desk, Nickel Plated and Spherical Mother of Pearl Pulls, Two Center Drawers, Three Drawers on Top of Desk
W64 D39 H41



4330-903



5530-121 Writing Table
 Rosewood Regency Desk, Sienna
 Leather Top, Brass Accents
 W56 D30 H30



5530-276 Writing Desk
 Warm Walnut Veneer Writing Desk, Antique
 Brown Leather Top, Satina Brass Accents
 W48 D28 H32



5530-321 Writing Desk

Black Cracked Finished Desk, Black Leather Inlay, Satina Brass Accents. Concealed in Top Desk Surface are Grounded Outlets, Phone, Data and USB Connections
W65 D33 H31



4130-781



5530-246 Writing Table

Aged Regency Finished Mahogany Writing Table, Veneer Top, Pompeian Brass Mounts
W47 D22 H31



5543-054 Writing Desk

Finely Carved Hand Painted Arabica and
Fresia Finished Writing Desk, Leather Top
W43 D25 H30



5530-338 Writing Desk

Black Lacquer Finished Writing Desk,
Black Leather Inlay Top, Gold Gilded
and Brass Accents, Three Drawers
W56 D35 H31



5551-024 Writing Desk

Black Lacquer Finished Writing Desk, Silver Gilded Iron Base, Black Hair Hide Accents
W52 D28 H33



5530-337 Writing Desk

Mahogany Finished Kidney Desk, Deep Green Leather Inlay Top, Amber Brass Accents, One Drawer
W44 D23 H31



1320-251 File Cabinet

Antique Brown Leather File Box, Polished Brass Accents
W23 D16 H25





4330-772 Desk Chair
Aged Regency Finished Swivel
Desk Chair on Brass Casters,
Deep Button Leather Upholstery
W27 D33 H38



4330-636 Desk Chair
Antique Aubergine Finished
Mahogany Swivel Desk Chair,
Western Brown Leather
W28 D27 H45



4330-762 Desk Chair
Warm Deco Walnut Swivel Desk
Chair on Brass Casters, Antiqued
Deep Button Leather
W26 D29 H39



4340-100 Desk Chair
Light Mahogany Finished Swivel
Executive Desk Chair, Deep
Button Sienna Leather
W30 D30 H41



4330-903 Desk Chair

Glazed Mahogany Finished
Desk Chair, Charcoal Striped
Velvet Upholstery
W26 D28 H38



4130-781 Desk Chair

Black Crackled Finished Campaign
Armchair, Vintage Leather
Upholstery, Brass Accents
W25 D25 H37



4330-901 Desk Chair

Black Vendome Finished Desk
Chair, Granite Leather and
Charcoal Fabric Upholstery
W26 D26 H38



LEISURE/GAMING



LONDON GENTLEMEN'S CLUB

THE LONDON GENTLEMEN'S CLUB IS DECIDEDLY ENGLISH WITH HIGHLY FIGURED, RICH CROUCH MAHOGANY AND BRASS ACCENTS AS WELL AS THE PROMINENCE OF LION CARVINGS.



3130-175 Pool Table

Hand Carved Corsair Mahogany Finished Pool Table, Blue Marine Simonis Cloth, Shell and Brass Accents, Adjustable Brass Levelers
W115 D65 H34



1330-428 Free-Standing Cue Rack

Corsair Mahogany Finished Pool Cue Floor Rack, Black Leather Inlay, Brass Accents. Includes Slots for Holding Both 9 and 8 Ball Racks
W42 D12 H63



1330-454 Wall-Mounted Cue Rack

Corsair Mahogany Finished Wall Mounted Cue Rack, Antique Mirror Glass and Brass Accents. Lower Doors for Rack Storage, Upper Door Flips Up for Storage
W58 D6 H69



3130-181 Game Table

Corsair Mahogany Finished Game Table, Black Leather Inlay with Gold Tooling, Four Drawers and Four Pull-Out Brass Lined Cup Holders
W51 D51 H32



3530-310 Bistro Table

Corsair Mahogany Finished Bistro Table, Black Leather Inlay Top with Tooling
W38 D38 H43



4230-410 Barstool *Seat Height: 31"*

Corsair Mahogany Finished Barstool with Black Leather Upholstery, Brass Footrest
W22 D25 H47



4330-935 Game Chair *Seat Height: 20"*

Corsair Mahogany Finished Game Chair, Black Leather Upholstery, Casters
W26 D26 H38



5130-609 Bar

Corsair Mahogany Finished Bar, Black Waxstone Top, Antique Brass Accents, Ice Compartment, Wine Glass Rack, Wine Rack, 5 Drawers for Storage, Removable Shelves for Accommodating a Small Refrigerator
W86 D37 H45



5130-610 Back Bar

Corsair Mahogany Finished Back Bar, Beveled Glass, Antique Brass Accents, Wine Glass Rack, Three Drawers for Storage
W57 D12 H49

NEW AMSTERDAM

NEW AMSTERDAM IS A HARMONIOUS BLEND OF CLASSIC CROTCH MAHOGANY AND CLEAN TRANSITIONAL SILHOUETTES. FEATURES OF THIS GROUP INCLUDE BLACK INLAID LEATHER WITH GILDING AND BRASS ACCENTS.



3130-163 Pool Table

Mahogany Finished Pool Table, Black Leather Inlay, Brass Accents, Burgundy Simonis Cloth Surface, Adjustable Brass Levelers
W113 D63 H34



1330-426 Wall-Mounted Cue Rack

Black Leather Inlaid Antique Aubergine Finished Wall Mounted Cue Rack, Brass and Mother of Pearl Accents, Crotch Mahogany Accents, Two Doors Open for Rack Storage
W65 D7 H75



1330-429 Free-Standing Cue Rack

Crotch Mahogany Pool Cue Floor Rack, Black Leather Inlay, Satina Brass Accents, Four Drawers for Storage. Includes Slots for Holding Both 9 and 8 Ball Racks
W40 D15 H62



3530-311 Bistro Table

Mahogany Finished Bistro Table, Gold Gilt and Black Lacquer Accents, Black Leather Top
W38 D38 H42



4230-401 Barstool *Seat Height: 31"*

London Mahogany Finished Barstool, Black Nottingham Leather Upholstery, Brass Accents
W24 D24 H45



5130-611 Back Bar

Mahogany Finished Back Bar, Black Leather Inlay, Beveled Mirror Glass, Satina Brass Accents, Wine Glass Rack, Three Drawers for Storage
W59 D14 H50



5130-613 Bar

Crotch Mahogany Bar, Black Leather Inlay, Black Waxstone Top, Satina Brass Accents, Ice Compartment, Wine Glass Rack, Wine Rack, 5 Drawers for Storage, Removable Shelves for Accommodating a Small Refrigerator
W82 D37 H43



1330-297 Cue Rack

Hunt Club Finished Wall Mounted Cue
Rack, Antique Brass Hardware, Mirror Plate
W63 D7 H77

SELECTING A MAITLAND-SMITH POOL TABLE ASSURES YOU OF SUPERIOR QUALITY AND EXCEPTIONAL DESIGN.

- 100% solid mahogany hardwood - no particle board, laminates or other artificial material anywhere on the table
- Tournament size - 9 foot table with 8 foot playing area
- Extra heavy frame construction with fully functional center beam, no metal brackets (1 3/8" thick outer frame and 1 1/4" thick on all beam members)
- Best quality 3 piece slate, 1 1/8" thick, mahogany hardwood framed
- Inlaid with genuine mother-of-pearl diamonds
- Simonis cloth for perfect accuracy and precision
- Superior high-end furniture finish
- Exceeds Billiard Congress of America standards for tournament play





3130-096 Game Table

Frontier Finished Mahogany Game Table,
Black Leather Top, Old English Brass
Accents, Game Pieces
W34 D34 H31



3130-108 Game Table

Aged Regency Mahogany Finished Round
Game Board Table, Florentine Leather
Top, Four Drawers, Game Pieces
W34 D34 H30



3130-177 Game Table

Natural Antique Finished Game Table,
Marquetry Decor, Old Brass Accents
W34 D34 H31



3131-024 Game Table

Mahogany Game Table with Playing
Pieces, Green Leather Top
W40 D40 H30



3140-016 Game Table

Light Mahogany Serpentine Game
Table with Playing Pieces
W34 D34 H30



3140-151 Game Table

Light Antique Finished Mahogany Serpentine
Game Table, Sienna Leather Top, Two
Drawers on Each Side
W35 D35 H30



3130-037 Game Table

Mahogany and Egyptian Brown Leather
Georgian Game Table with Playing Pieces
W45 D33 H31



3130-110 Game Table

Frontier Finished Barley Twist Pedestal Game
Table, Florentine Leather Top, Game Pieces
W31 D27 H30



3130-100 Game Table

Aged Regency
Finished Mahogany
Game Table, Mixed
Wood Parquetry
Gameboard Top,
Game Pieces
W44 D20 H31



3130-169 Game Table

Kensington Mahogany Finished Game Table,
Multi Leather Inlay, Antique Brass Accents
W36 D36 H30



3130-173 Game Table

Dark Wellington Cottage Finish Game
Table, Brown Leather Inlay, Brass Accents
W38 D38 H31





3130-174 Game Table

Distressed Antique Mahogany Finished Game Table, Horse Head Motif, Leather Inlay, Game Pieces
W37 D37 H31



3130-178 Game Table

Chelsea Mahogany Finished Folding Game Table, Green Leather Inlay, Brass Accents
W39 D39 H30



3130-101 Card Table

Frontier Finished Mahogany Card Table, Black Angus Leather Top, Pompeian Brass
W48 D48 H31



3130-137 Game Table

Rosewood Finish on Rosewood Veneer Game Table, Beige Faux Shagreen Leather Top, Four Pull Out Brass Lined Cup Holders
W38 D38 H30



3130-162 Game Table

Dark Wellington Cottage Finished Game Table with Ambassador Leather Inlay
W40 D40 H31



3130-165 Game Table

Camden Passage Finished Game Table,
Ambassador Leather Inlay Top
W38 D38 H30



3130-179 Game Table

Aged Regency Finished Game Table, Marquetry
Decor, Hand Carved Accents, Four Drawers
and Four Pull-Out Drink Holders
W40 D40 H30



3130-181 Card Table

Corsair Mahogany Finished Game Table, Black Leather Inlay with Gold
Tooling, Four Drawers and Four Pull-Out Brass Lined Cup Holders
W51 D51 H32



\$H 3130-184 Game Table

Belgravia Finished Game Table, Light
Beige Leather Inlay, Amber Brass Accents
W36 D36 H30



3130-183 Poker Table

Black Lacquer Finished Poker Table with Gold Gilded
Accents, Ambassador Inlay Leather Top with Chip
Wells and Six Brass Cup Holders
W65 D57 H32



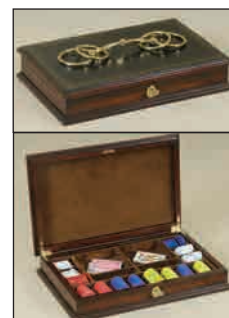
3130-074 Card Table

Lido Finished Mahogany Card Table,
Bird's Eye Maple Veneer; Black Leather
Top, Six Pull Out Cup Holders
W66 D64 H30



3130-099 Game Table

Heavily Distressed Hunt Club Mahogany
Game Table, Black Leather Top, Verdigris
Brass, Six Chip Drawers, Six Pull Out
Verdigris Brass Lined Drink Holders
W67 D67 H31



1130-801 Game Box

London Mahogany Finished
Box with Black Leather Inlay,
Polished Brass Accents
W19 D12 H5



3130-123 Texas Hold'em Table

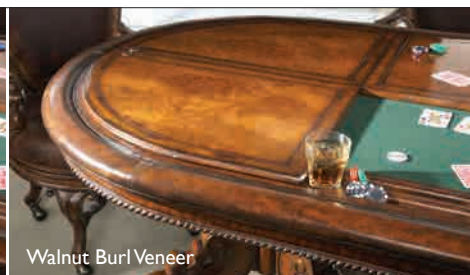
Dark Antique Lido Finished Texas Hold'em Poker Table, Green Felt and Leather Top, Becomes a Dining Table With Addition of Matching Six-Piece Top (1330-420)
W91 D46 H32

1330-420 Optional Table Top

Dark Antique Lido Finished Dining Table Top. Reversible Six Piece Top Has Dark Antique Lido Finish on European Walnut Burl on One Side and Leather on the Other. Works with 3130-123
W83 D38 H1



Leather



Walnut Burl Veneer



3130-167 Game Table

Hand Carved Aged Regency Finished Game Table, Old Attic Leather Upholstery
W63 D63 H31



3130-160 Foosball Table

Napoleon Brown and Antique Aubergine Finished Foosball Table, Monkey & Lion Players
W58 D31 H36



3130-218 Shuffleboard Table

Aged Regency Finished Shuffleboard Table, Maple Game Surface, Pucks and Wax Not Included
W170 D36 H34

The Shuffleboard table is a 14 foot solid wood case crafted by Maitland-Smith with the best North American Maple playing surface made by McClure Shuffleboards. The playing board comes equipped with 3 climate adjusters which keep the play surface from warping.



4330-812 Game Chair {left}

Seat Height: 21"
Black Vendome Finished Game
Chair; Tufted Cuero Leather
Upholstery; Black Tack Accents
W27 D28 H34



4330-811 Game Chair {right}

Seat Height: 20"
Carved Dark Wellington Cottage
Finished Game Chair; Tufted
Kodiak Leather Upholstery
W28 D31 H38



4330-810 Game Chair {left}

Seat Height: 21"
Napoleon Brown Finished Swivel
Occasional Chair; Hemingway
Black Leather Upholstery
W26 D28 H39



4330-875 Game Chair {right}

Seat Height: 21"
Aged Regency Finished Game
Chair; Chocolate Leather
Upholstery; Brass Tack Accents
W27 D27 H38



4130-631 Game Chair {left}

Seat Height: 19"
Dark Antique Lido Finished
Carved Game Chair on Casters,
Bordeaux and Brindle Leather
W23 D24 H40



4330-819 Game Chair {right}

Seat Height: 19"
Dark Wellington Cottage Finish
Swivel Game Chair; Old Attic
Leather Upholstery
W25 D28 H40

4326-050**Game Chair {left}**

Roman Brown Leather Neoclassic
Armchair, Tobacco Leather Seat
Finely Cast Aluminum Mounts,
Lion's Head Motif Brass
W25 D21 H33

**4330-601****Game Chair {right}**

Seat Height: 21"

Hunt Club Finished Mahogany
Armchair, Pompeian Patina Brass
Accents, Black Leather
W27 D35 H35

**4330-712****Game Chair {left}**

Seat Height: 21"

Frontier Finished Swivel
Game Chair, Black Angus
Leather Upholstery
W24 D25 H34

**4330-845****Game Chair {right}**

Seat Height: 20"

Carved Napoleon Brown Finished
Game Chair, Briarwood Leather
Upholstery, Brass Accents
W27 D23 H33

**4330-935****Game Chair {left}**

Seat Height: 20"

Corsair Mahogany Finished
Game Chair, Black Leather
Upholstery, Casters
W26 D26 H38

**4330-752****Game Chair {right}**

Seat Height: 21"

Warm Walnut Finished Swivel
Game Chair, Florentine
Brown Leather Seat
W24 D25 H34





4330-876 Game Chair

Seat Height: 21"

Faded Mahogany Finished Game Chair,
Brompton Brown Leather Upholstery
W25 D28 H39



4330-924 Game Chair

Seat Height: 21"

Black Lacquer Finished Game Chair, Brass Tack and Gold
Painted Accents, Black Leather Upholstery, Brass Casters
W29 D27 H34



4330-918 Game Chair

Seat Height: 21"

Dark Wellington Cottage Finish Game Chair,
Cognac Leather Upholstery, Brass Tack Accents
W24 D24 H34



4330-916 Game Chair

Seat Height: 19 1/2"

Aged Regency Finished Game Chair, Sycamore
Leather Upholstery, Brass Tack Accents
W25 D24 H35



5130-592 Bar

Safari Brown Finished Bar Cabinet, Vintage
Leather Inlay, Mactan Stone Top
W43 D23 H51



5130-595 Bar

London Mahogany Finished Bar, Bentley Black
Tufted Leather Front, Black Waxstone Top
W68 D33 H43



4230-401 Barstool



5130-609 Bar

Corsair Mahogany Finished Bar; Black Waxstone Top, Antique Brass Accents, Ice Compartment, Wine Glass Rack, Wine Rack, 5 Drawers for Storage, Removable Shelves for Accommodating a Small Refrigerator
W86 D37 H45



5130-610 Back Bar

Corsair Mahogany Finished Back Bar; Beveled Glass, Antique Brass Accents, Wine Glass Rack, Three Drawers for Storage
W57 D12 H49



5130-611 Back Bar

Mahogany Finished Back Bar; Black Leather Inlay, Beveled Mirror Glass, Satina Brass Accents, Wine Glass Rack, Three Drawers for Storage
W59 D14 H50



5130-613 Bar

Crotch Mahogany Bar; Black Leather Inlay, Black Waxstone Top, Satina Brass Accents, Ice Compartment, Wine Glass Rack, Wine Rack, 5 Drawers for Storage, Removable Shelves for Accommodating a Small Refrigerator
W82 D37 H43



5143-252 Bar

Painted Antique Red Finished Bar Cabinet,
Telephone Booth Motif, Glass Panels, Removable
Shelves for Accommodating Small Refrigerator
W31 D29 H92



4230-258 Pool Bench

Seat Height: 31"
Aubergine Finished Double
Pool Bench with Cue Holders,
Black Leather Upholstery,
Pull-out Drink Holders on Sides
W52 D32 H48



4230-224 Barstool

Seat Height: 31"
Mahogany Finished Swivel Barstool,
Lion's Head Motif, Bentley Chocolate
Leather Upholstery, Brass Accents
W24 D24 H44



4230-226 Barstool

Seat Height: 31"
Dark Antique Lido Finished
Mahogany Barstool, Old Attic
Leather Upholstery
W23 D26 H45



4230-250 Barstool

Seat Height: 31"
Spanish Antique Mahogany
Finished Swivel Barstool,
Old Attic Leather Upholstery,
Brass Accents
W24 D24 H46

4430-226 Counter Stool

Seat Height: 26"
W23 D26 H38



4230-320 Barstool

Seat Height: 31"
Napoleon Brown Finished Barstool,
Gemini Oak Leather Upholstery,
Brass Accents
W28 D28 H47



4230-343 Barstool

Seat Height: 31"
Carved Dark Wellington Cottage
Finished Barstool, Kodiak
Leather Upholstery
W25 D24 H49



4230-346 Barstool

Seat Height: 30"
Dark Antique Lido Finished
Barstool, Ragtime Leather
and Paisley Upholstery
W26 D28 H50

4430-320 Counter Stool

Seat Height: 26"
W27 D27 H40



4230-372 Counter Stool

Seat Height: 26"

Avignon Cottage Finished Counter Stool with Abaca Rope Rush

Seat, Brass Footrest

W21 D23 H37



4230-398 Barstool

Seat Height: 31"

London Mahogany Finished Barstool, Mocha Fabric Upholstery
Champagne Silver Brass Footrest

W24 D24 H45



4230-401 Barstool

Seat Height: 31"

London Mahogany Finished Barstool, Black Nottingham Leather Upholstery, Brass Footrest

W24 D24 H45



4241-148 Barstool

Seat Height: 31"

Oceania Finished Rattan Swivel Barstool, Pebble Fabric Upholstery
Samoan Brass Accents

W19 D20 H42



4230-412 Barstool

Seat Height: 30"

Aged Regency Finished Barstool, Charcoal Grey Fabric Upholstery,
Brass Stretcher

W23 D24 H45



4230-402 Barstool

Seat Height: 31"
Alhambra Finished Barstool,
Monarch Gator Leather
Upholstery, Brass Accents
W20 D23 H49



4230-410 Barstool

Seat Height: 31"
Corsair Mahogany Finished Barstool
with Black Leather Upholstery
W22 D25 H47



4230-555 Barstool

Seat Height: 32"
Lido Finished Mahogany
Barstool, Brown Leather
Upholstery, Brass Footrest
W24 D34 H45



4230-601 Barstool

Seat Height: 31"
Hunt Club Mahogany and
Brown Leather Deep Button
Upholstered Swivel Barstool,
Brass Accents
W21 D24 H42



4230-602 Barstool

Seat Height: 31"
Antique Aubergine Finished
Swivel Barstool, Black Leather
Seat, Brushed Satina Accents
W24 D24 H45



4230-609 Barstool

Seat Height: 31"
Aged Regency Mahogany Finished
Swivel Barstool, Uganda Crocodile
Embossed Leather
W24 D24 H45

4430-609 Counter Stool

Seat Height: 26"
W24 D25 H38



4230-614 Barstool

Seat Height: 31"

Aged Regency Finished Barstool with Cue Holder; Nailhead Trim and Frassimo Embossed Leather
W23 D29 H47



4230-644 Barstool

Seat Height: 31"

Frontier Finished Mahogany Swivel Barstool, Deep Button Red Brown Leather Upholstery, Brass Accents
W23 D27 H44



4230-651 Barstool

Seat Height: 31"

Aged Regency Finished Mahogany Swivel Barstool, Venetian Regal Leather Upholstery, Brass Accents
W26 D30 H43

4430-644 Counter Stool

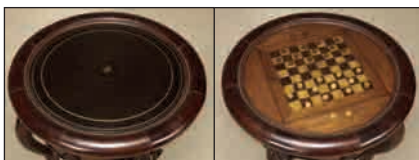
Seat Height: 26"

W23 D27 H39

4430-651 Counter Stool

Seat Height: 26"

W26 D30 H38



3530-260 Bistro/Game Table

Hand Carved Aged Regency Finished Bistro Table with Tilting Game Board Top, Gold Tooled Leather Top Flips to Reveal Game Board. Doors Open for Backgammon, Game Pieces
W41 D41 H43



3530-299 Bistro Table

London Mahogany Finished Bistro Dining Table
W38 D38 H43



3530-300 Bistro Table

Safari Brown Finished Bistro Dining Table,
Burnished Copper Finished Brass Top
W40 D40 H43



3530-310 Bistro Table

Corsair Mahogany Finished Bistro Table,
Black Leather Inlay Top with Tooling
W38 D38 H43



3530-311 Bistro Table

Mahogany Finished Bistro Table, Gold Gilt and
Black Lacquer Accents, Black Leather Top
W38 D38 H42



5130-521 TV Cabinet

Accommodates most 42" Flat Screen Televisions
Multi Veneer Two Way Mirror and
Flat TV Cabinet with Shell Inlay
W62 D9 H49

5130-588 TV Cabinet

Accommodates most 50" Flat Screen Televisions
Aubergine Finished and Black Leather Inlay
Two Way Wall Mirror and Flat Screen Cabinet
W66 D8 H55
Compliments 5130-641



5130-604 TV Cabinet

Accommodates most 42" Flat Screen Televisions
Silver Gilded Finished Two Way Mirror
and TV Cabinet.
W60 D8 H47

See Interior Dimensions on page 327-328 to determine TV size accommodated.



5130-578 TV Stand

Mahogany and Black Lacquer Finished TV Stand,
Handpainted Gold and Amber Brass Accents
W68 D21 H35



3430-973 TV Stand

Island Kelobra Finished Media Console, White
Agate Top, Leather and Brass Accents
W72 D22 H29



5130-641 TV Stand

Aged Regency Finish TV Stand, Brown and Black
Marquetry Inlay Leather; Gold Accents, 3 Drawers
W80 D21 H36
Compliments 5130-588



5130-596 TV Stand

Natural Antique Finished T.V. Stand, Rosewood Veneer;
Vintage Silver Brass Accents, Black Waxstone Top
W80 D23 H36

BEDS



6330-142 Bed

Hand Carved Dark Wellington Cottage

Finished King Bed, Old Attic Leather

Converts to California King

W87 D92 H92



6330-143 Bed

Black Vendome Finished Carved King
Size Bed, Decorative Brass Accents
Converts to California King
W88 D93 H94



▲ 6330-140 Bed

Aged Regency Finished and Muldon Leather
King Size Bed with Antique Hammered Brass
Converts to California King
W89 D93 H69



▼ 6330-158 Bed

Chelsea Mahogany Finished King
Size Bed, Amber Brass Accents
W85 D90 H73





6330-151 Bed
 Corsair Finished Mahogany King
 Bed with Gilded Accents
 W86 D90 H89



6330-124 Bed
 Hand Carved Aged Regency Finished
 Mahogany Four Poster King Size Bed
 Converts to California King
 W82 D88 H88

OUTDOOR



2166-166P

Decorative Antique Rust
Finished Outdoor Terracotta
Urn with Finial on Stand
W29 D29 H93